

APP CRS	Rwy Idg	<b>3000</b>
<b>180°</b>	TDZE	<b>137</b>
	Apt Elev	<b>137</b>

# RNAV (GPS) RWY 18

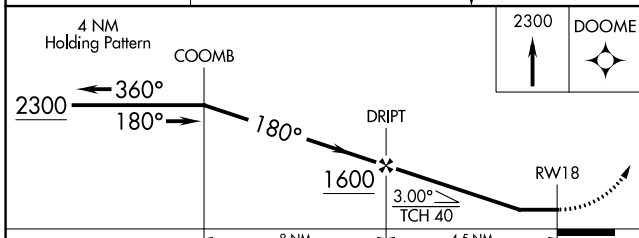
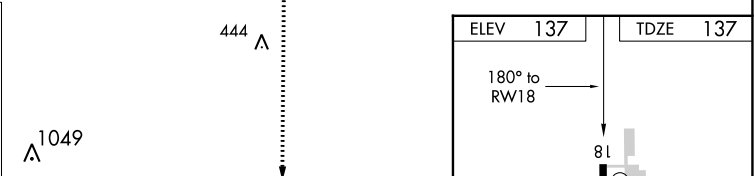
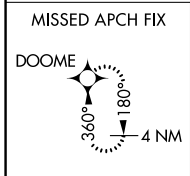
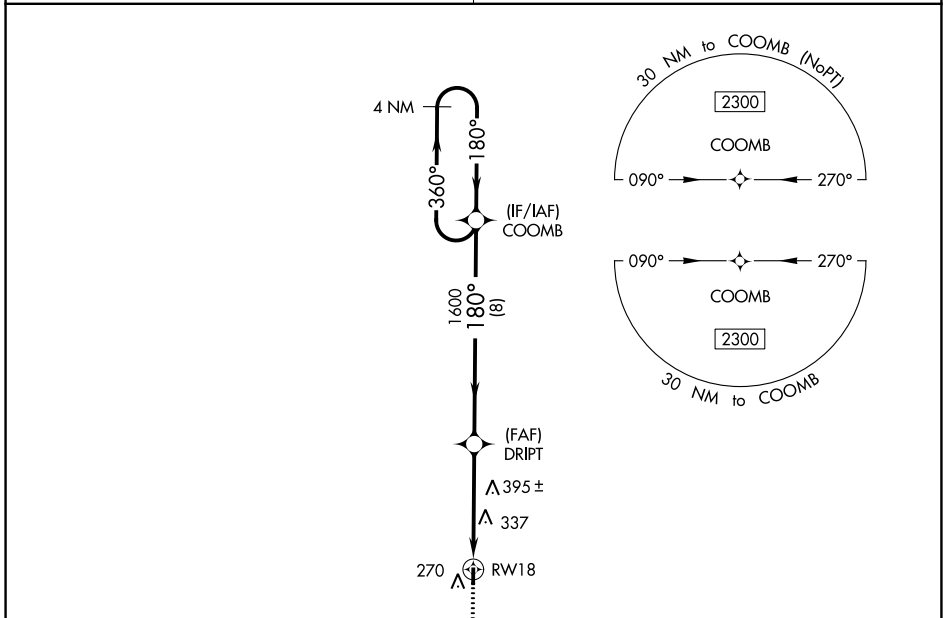
RULEVILLE-DREW (M37)

**▽** DME/DME RNP-0.3 NA. Use Cleveland altimeter setting; when not received, use Greenwood altimeter setting and increase all MDA 40 feet and increase LNAV and Circling Cat C visibility ¼ mile. Procedure NA at night. Helicopter visibility reduction below 1 SM NA.

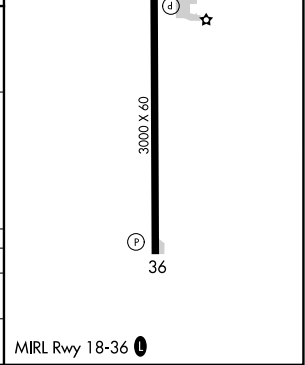
**△** NA

MISSED APPROACH: Climb to 2300 direct DOOME and hold.

MEMPHIS CENTER <b>135.875 269.35</b>	CTAF <b>122.9</b>
---	----------------------



CATEGORY	A	B	C	D
LNAV MDA	680-1	543 (600-1)	680-1 3/8 543 (600-1 3/8)	NA
<b>C</b> CIRCLING	680-1 543 (600-1)	720-1 583 (600-1)	780-1 3/4 643 (700-1 3/4)	NA



SC-4, 26 DEC 2024 to 23 JAN 2025

SC-4, 26 DEC 2024 to 23 JAN 2025