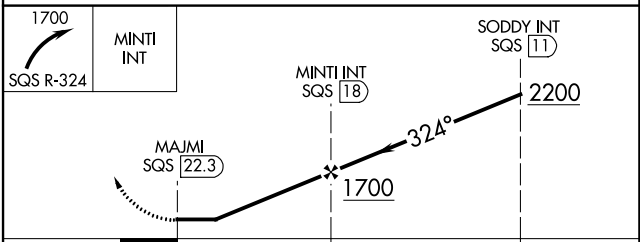
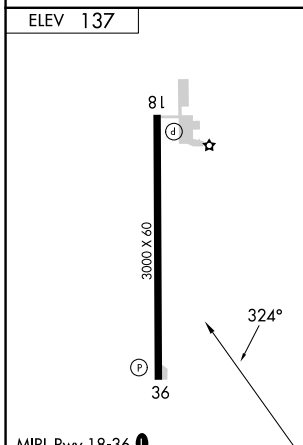
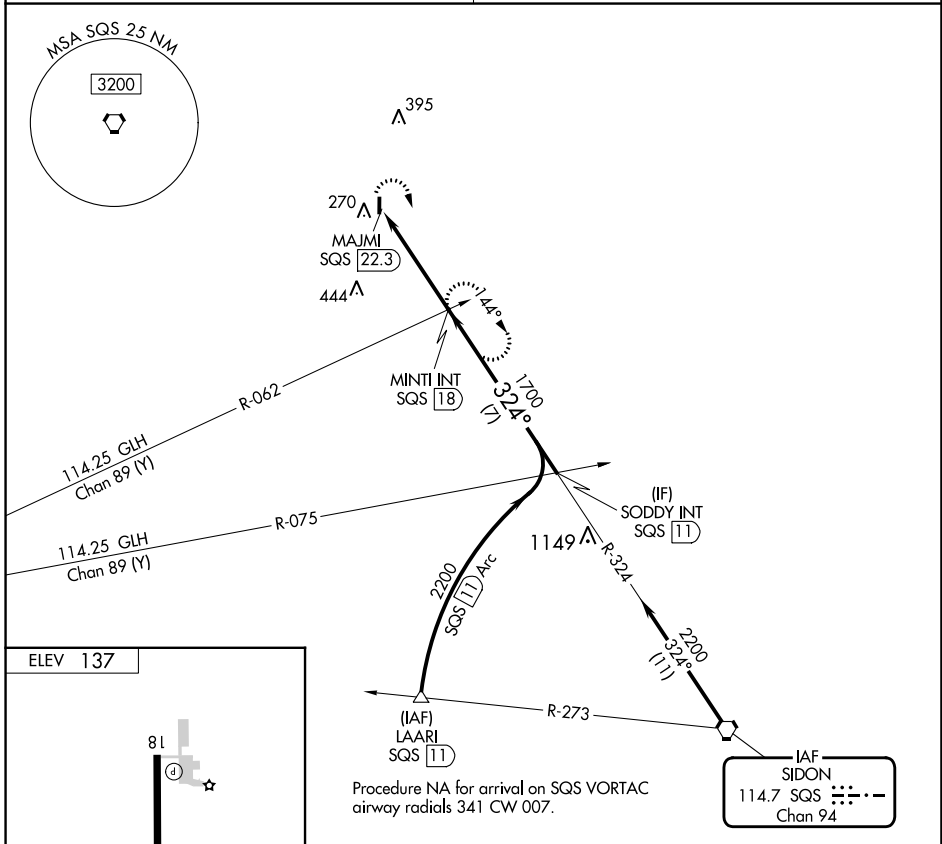


|  |                        |   |
|--|------------------------|---|
| VORTAC SQS<br><b>114.7</b><br>Chan <b>94</b> | APP CRS<br><b>324°</b> | Rwy Idg<br>TDZE<br>Apt Elev<br><b>N/A</b><br><b>N/A</b><br><b>137</b> |
|--|------------------------|---|

**VOR-A**  
RULEVILLE-DREW (M37)

**▽** Rwy 18 and 36 helicopter visibility reduction below 1 SM NA. Use Cleveland altimeter setting; when not received, use Greenwood altimeter setting and increase all MDAs 40 feet, increase Cat C visibility 1/4 SM. Procedure NA at night.  
**△ NA** MISSED APPROACH: Climbing right turn to 1700 on SQS VORTAC R-324 to MINTI INT/SQS 18 DME and hold.

|   |                      |
|---|----------------------|
| MEMPHIS CENTER<br><b>135.875 269.35</b> | CTAF<br><b>122.9</b> |
|---|----------------------|



|                   |                           |                           |  |         |      |
|-------------------|---------------------------|---------------------------|--|---------|------|
| FAF to MAP 4.3 NM |                           |                           |  |         |      |
| Knots             | 60                        | 90                        | 120  | 150     | 180  |
| Min:Sec           | 4:18                      | 2:52                      | 2:09   | 1:43    | 1:26 |
| <b>☑</b> CIRCLING | A<br>620-1<br>483 (500-1) | B<br>720-1<br>583 (600-1) | C<br>780-1 <sup>3</sup> / <sub>4</sub><br>643 (700-1 <sup>3</sup> / <sub>4</sub> ) | D<br>NA |      |

SC-4, 26 DEC 2024 to 23 JAN 2025

SC-4, 26 DEC 2024 to 23 JAN 2025