

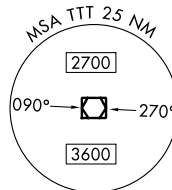
# JOE POOL SEVEN DEPARTURE

LONE STAR DEP CON  
118.1 306.95  
CLNC DEL  
123.95  
GND CON  
123.95  
DENTON TOWER ★  
119.95 (CTAF)

RADAR and DME required.

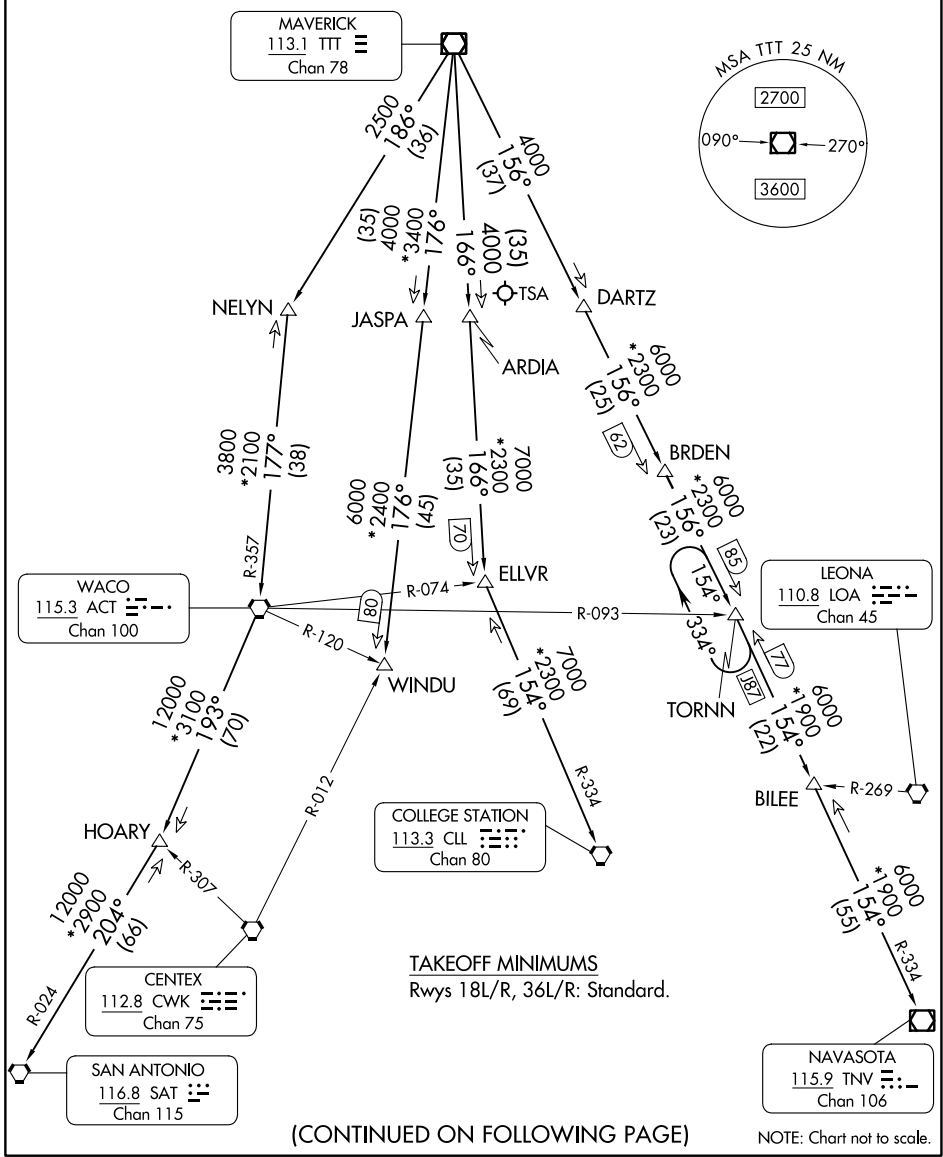
**TOP ALTITUDE:  
ASSIGNED BY ATC**

MAVERICK  
113.1 TTT  
Chan 78



SC-2, 26 DEC 2024 to 23 JAN 2025

SC-2, 26 DEC 2024 to 23 JAN 2025



**TAKEOFF MINIMUMS**  
Rwys 18L/R, 36L/R: Standard.

(CONTINUED ON FOLLOWING PAGE)

NOTE: Chart not to scale.

# JOE POOL SEVEN DEPARTURE

# JOE POOL SEVEN DEPARTURE



## DEPARTURE ROUTE DESCRIPTION

When entering controlled airspace, fly assigned heading for RADAR vectors to appropriate route. Maintain ATC assigned altitude.

COLLEGE STATION TRANSITION (JPOOL7.CLL): From over TTT VOR/DME on TTT R-166 to ELLVR, then on CLL R-334 to CLL VORTAC.

ELLVR TRANSITION (JPOOL7.ELLVR): From over TTT VOR/DME on TTT R-166 to ELLVR.

HOARY TRANSITION (JPOOL7.HOARY): From over TTT VOR/DME on TTT R-186 to NELYN, then on ACT R-357 to ACT VORTAC, then on ACT R-193 to HOARY.

NAVASOTA TRANSITION (JPOOL7.TNV): From over TTT VOR/DME on TTT R-156 to TORNN, then on TNV R-334 to TNV VOR/DME.

SAN ANTONIO TRANSITION (JPOOL7.SAT): From over TTT VOR/DME on TTT R-186 to NELYN, then on ACT R-357 to ACT VORTAC, then on ACT R-193 to HOARY, then on SAT R-024 to SAT VORTAC.

TORNN TRANSITION (JPOOL7.TORNN): From over TTT VOR/DME on TTT R-156 to TORNN.

WACO TRANSITION (JPOOL7.ACT): From over TTT VOR/DME on TTT R-186 to NELYN, then on ACT R-357 to ACT VORTAC.

WINDU TRANSITION (JPOOL7.WINDU): From over TTT VOR/DME on TTT R-176 to WINDU.

NOTE: COLLEGE STATION Transition: For piston and turboprop aircraft destined to HOU, EFD, GLS, or LBX. Also for all other aircraft types destined to all other Houston terminal area airports except IAH, CXO, DWH, T78 or 6R3.

NOTE: ELLVR Transition: For turbojet aircraft destined to HOU, EFD, GLS, or LBX.

NOTE: SAN ANTONIO Transition: For aircraft overflying Centex and San Antonio.

NOTE: TORNN Transition: Only for aircraft destined IAH, CXO, DWH, T78 or 6R3.

NOTE: WACO Transition: For aircraft inbound to Waco or Gray terminal area airports.

NOTE: WINDU Transition: For aircraft inbound to Austin or San Antonio terminal area.

SC-2, 26 DEC 2024 to 23 JAN 2025

SC-2, 26 DEC 2024 to 23 JAN 2025