

DENTON, TEXAS

AL-5866 (FAA)

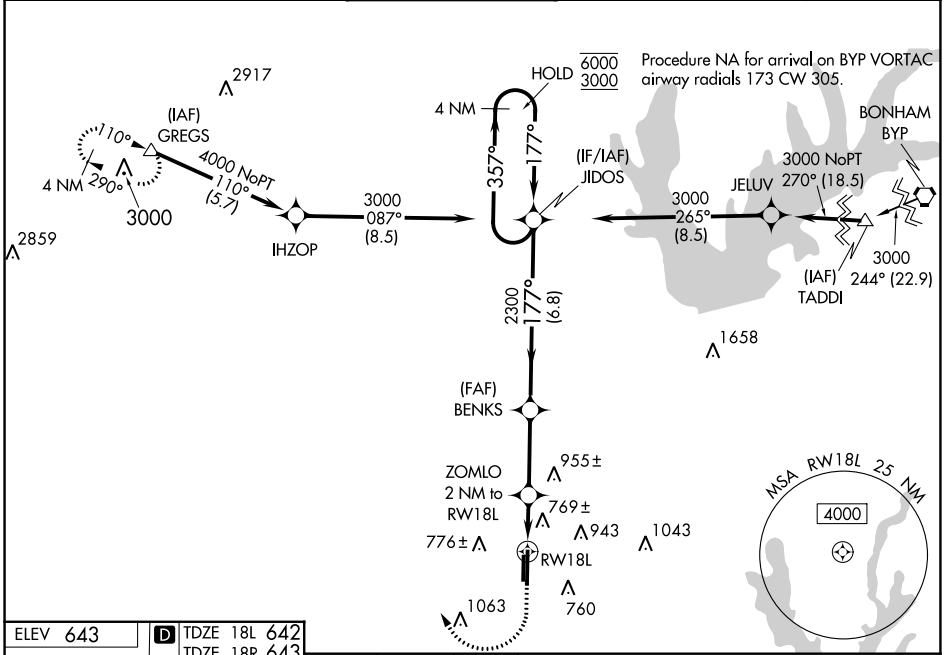
24305

WAAS CH 82143 W18A	APP CRS 177°	Rwy Idg TDZE Apt Elev	18L 6502 642 643	18R 5003 643 643
--	------------------------	-----------------------------	--	--

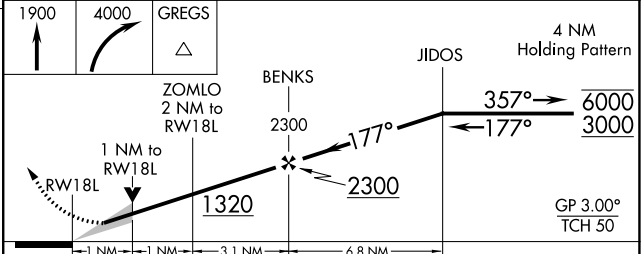
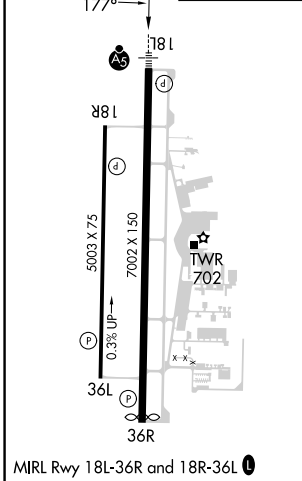
RNAV (GPS) RWY 18L

DENTON ENTERPRISE (D'TO)

RNP APCH-GPS.		MALSRL		MISSED APPROACH: Climb to 1900 then climbing right turn to 4000 direct GREGS and hold.	
<p>⚠ For uncompensated Baro-VNAV systems, LNAV/VNAV NA below -9°C or above 54°C. For inop ALS, increase LNAV/VNAV all Cats visibility to 3/8 SM, and LNAV Cats C and D to 1 SM.</p>					
ATIS 119.325	LONE STAR APP CON 118.1 306.95	DENTON TOWER* 119.95 (CTAF) 0	GND CON 123.95	CLNC DEL 123.95	UNICOM 122.95



ELEV 643	D TDZE 18L 642
	TDZE 18R 643



CATEGORY	A	B	C	D
LPV DA		842-1/2	200 (200-1/2)	
LNAV/VNAV DA		950-1/2	308 (400-1/2)	
LNAV MDA	1020-1/2	378 (400-1/2)	1020-3/4	378 (400-3/4)
SIDESTEP 18R	1100-1	457 (500-1)	1100-1 1/2	457 (500-2)
C CIRCLING	1100-1	1260-1	1380-2	1380-2 1/4
	457 (500-1)	617 (700-1)	737 (800-2)	737 (800-2 1/4)

DENTON, TEXAS
Orig-A 22FEB24

33°12'N-97°12' W

DENTON ENTERPRISE (D'TO)

RNAV (GPS) RWY 18L

SC-2, 26 DEC 2024 to 23 JAN 2025

SC-2, 26 DEC 2024 to 23 JAN 2025