

DENTON, TEXAS

AL-5866 (FAA)

24305

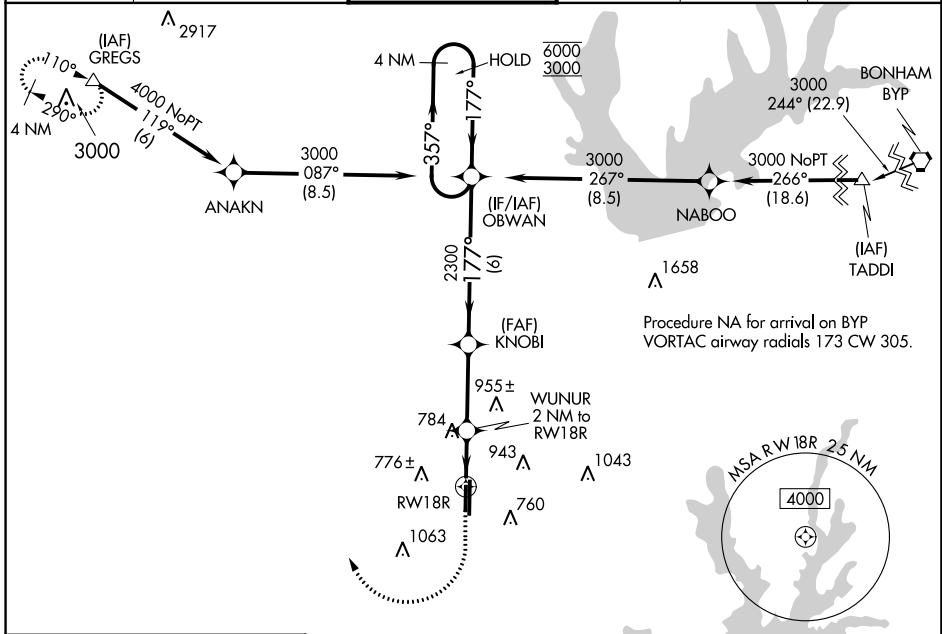
WAAS CH 97643 W18B	APP CRS 177°	Rwy Idg TDZE Apt Elev	18R 5003 643 643	18L 6502 642 643
---------------------------------	------------------------	-----------------------------	--	--

RNAV (GPS) RWY 18R

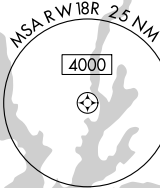
DENTON ENTERPRISE (D.T.O)

RNP APCH.			MISSED APPROACH: Climb to 1900 then climbing right turn to 4000 direct GREGS and hold.		
<p>For uncompensated Baro-VNAV systems, LNAV/VNAV NA below -9°C or above 54°C.</p>					

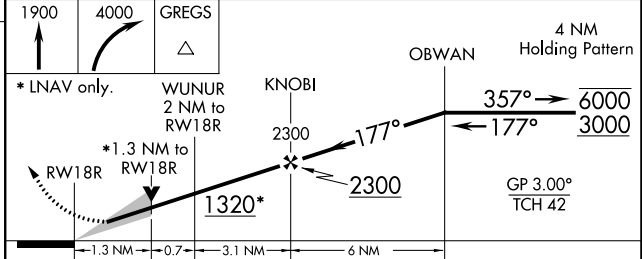
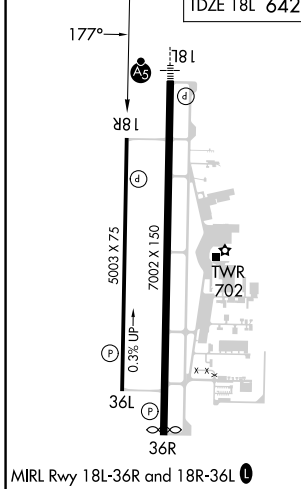
ATIS 119.325	LONE STAR APP CON 118.1 306.95	DENTON TOWER* 119.95 (CTAF) 0	GND CON 123.95	CLNC DEL 123.95	UNICOM 122.95
------------------------	--	---	--------------------------	---------------------------	-------------------------



Procedure NA for arrival on BYP
VORTAC airway radials 173 CW 305.



ELEV 643	D	TDZE 18R 643	TDZE 18L 642
----------	---	--------------	--------------



CATEGORY	A	B	C	D
LPV DA		893-3/4	250 (300-3/4)	
LNAV/VNAV DA		926-7/8	283 (300-7/8)	
LNAV MDA	1100-1	457 (500-1)	1100-13/8	457 (500-13/8)
SIDESTEP 18L	1100-1 1/4	458 (500-1 1/4)	1100-1 3/4	1100-2 1/4
			458 (500-1 3/4)	458 (500-2 1/4)
CIRCLING	1100-1	1260-1	1380-2	1380-2 1/4
	457 (500-1)	617 (700-1)	737 (800-2)	737 (800-2 1/4)

DENTON, TEXAS
Orig 31DEC20

33°12'N-97°12' W

DENTON ENTERPRISE (D.T.O)

RNAV (GPS) RWY 18R

SC-2, 26 DEC 2024 to 23 JAN 2025

SC-2, 26 DEC 2024 to 23 JAN 2025