

WAAS CH <b>56543</b> <b>W36B</b>	APP CRS <b>357°</b>	Rwy Idg TDZE Apt Elev	36L <b>5003</b> <b>641</b> <b>643</b>	36R <b>6502</b> <b>639</b> <b>643</b>
--	------------------------	-----------------------------	--	--

# RNAV (GPS) RWY 36L

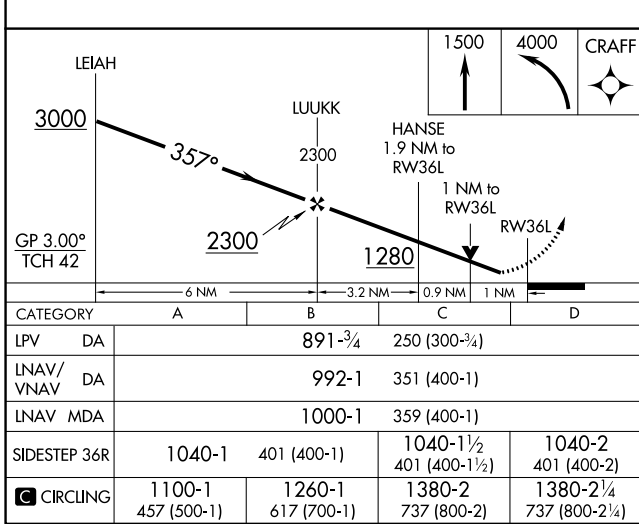
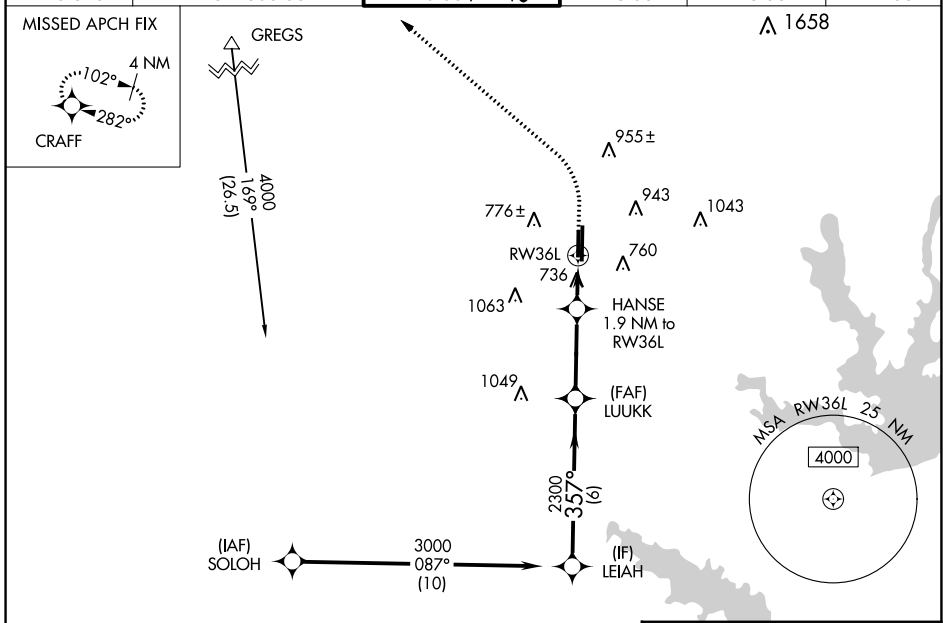
DENTON ENTERPRISE (DTON)

RNP APCH - GPS.

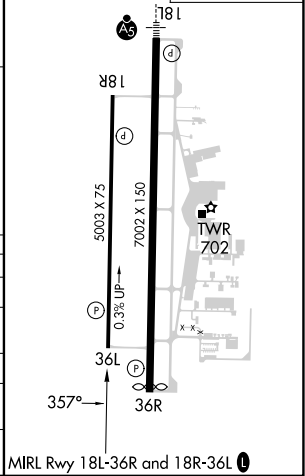
**⚠** For uncompensated Baro-VNAV systems, LNAV/VNAV NA below -9°C or above 54°C. Rwy 36L helicopter visibility reduction below 3/4 SM NA.

MISSED APPROACH: Climb to 1500 then climbing left turn to 4000 direct CRAFT and hold, continue climb-in-hold to 4000.

ATIS <b>119.325</b>	LONE STAR APP CON <b>118.1 306.95</b>	<b>DENTON TOWER ★</b> <b>119.95 (CTAF) 0</b>	GND CON <b>123.95</b>	CLNC DEL <b>123.95</b>	UNICOM <b>122.95</b>
------------------------	--	---	--------------------------	---------------------------	-------------------------



ELEV 643	TDZE 36L 641
	TDZE 36R 639



SC-2, 26 DEC 2024 to 23 JAN 2025

SC-2, 26 DEC 2024 to 23 JAN 2025