

DENTON, TEXAS

AL-5866 (FAA)

24305

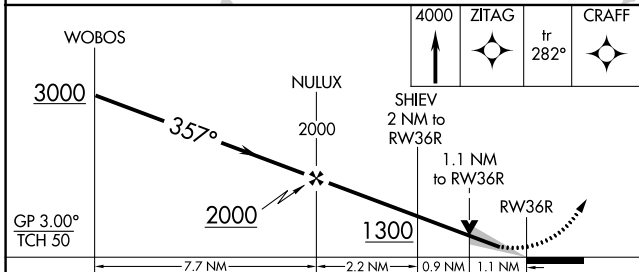
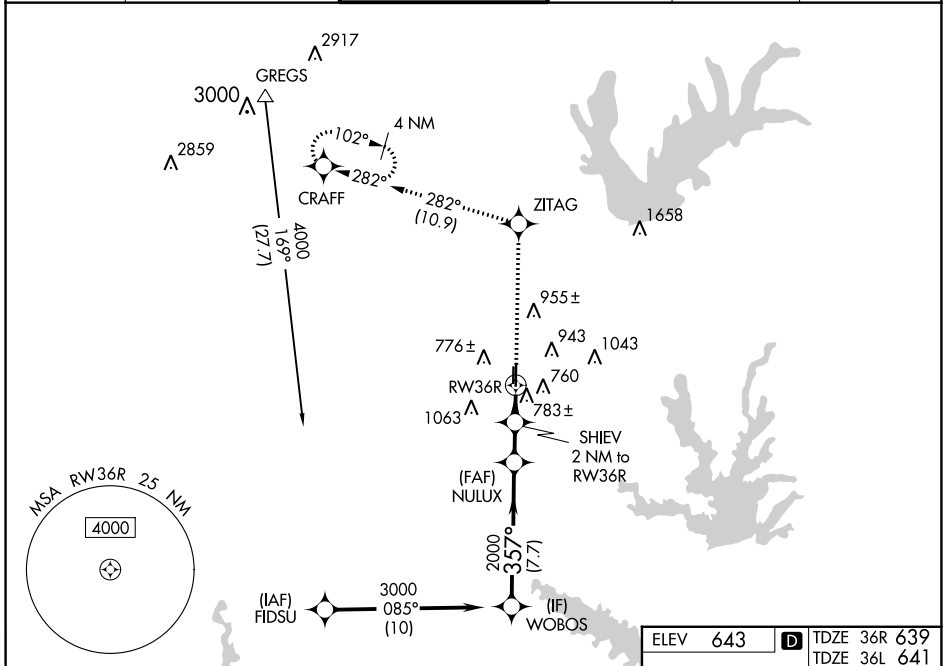
WAAS CH <b>87043</b> <b>W36A</b>	APP CRS <b>357°</b>	Rwy Idg TDZE Apt Elev	36R <b>6502</b> <b>639</b> <b>643</b>	36L <b>5003</b> <b>641</b> <b>643</b>
--	------------------------	-----------------------------	--	--

# RNAV (GPS) RWY 36R

DENTON ENTERPRISE (D'TO)

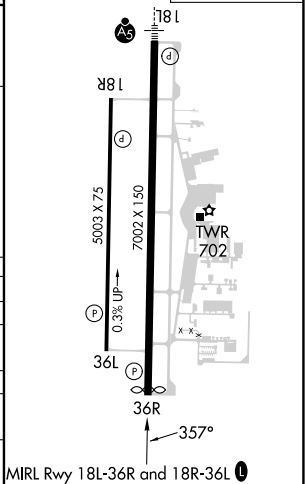
RNP APCH-GPS.		MISSED APPROACH: Climb to 4000 direct ZITAG and on track 282° to CRAFF and hold.			
<p>▼ ▲ For uncompensated Baro-VNAV systems, LNAV/VNAV NA below -9°C or above 54°C.</p>					

ATIS <b>119.325</b>	LONE STAR APP CON <b>118.1 306.95</b>	DENTON TOWER * <b>119.95</b> (CTAF) <b>0</b>	GND CON <b>123.95</b>	CLNC DEL <b>123.95</b>	UNICOM <b>122.95</b>
------------------------	--	---	--------------------------	---------------------------	-------------------------



CATEGORY	A	B	C	D
LPV DA		839-3/4	200 (200-3/4)	
LNAV/VNAV DA		964-1	325 (400-1)	
LNAV MDA	1040-1	401 (400-1)	1040-1 1/8	401 (400-1 1/8)
SIDESTEP 36L	1040-1	399 (400-1)	1040-1 1/2 399 (400-1 1/2)	1040-2 399 (400-2)
CIRCLING	1100-1 457 (500-1)	1260-1 617 (700-1)	1380-2 737 (800-2)	1380-2 1/4 737 (800-2 1/4)

ELEV 643	TDZE 36R 639	TDZE 36L 641
----------	--------------	--------------



DENTON, TEXAS  
Orig-A 16MAY24

33°12'N-97°12'W

# DENTON ENTERPRISE (D'TO) RNAV (GPS) RWY 36R

SC-2, 26 DEC 2024 to 23 JAN 2025

SC-2, 26 DEC 2024 to 23 JAN 2025