

RADAR and DME required.

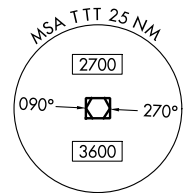
**TOP ALTITUDE:
ASSIGNED BY ATC**

LONE STAR DEP CON
118.1 306.95
CLNC DEL
123.95
GND CON
123.95
DENTON TOWER*
119.95 (CTAF)

(WORTH1.TTT) 24305
WORTH ONE DEPARTURE

AL-5866 (FAA)

DENTON ENTERPRISE (DTEO)
DENTON, TEXAS



NOTE: Chart not to scale.

(CONTINUED ON FOLLOWING PAGE)

PANHANDLE
116.6 PNH
Chan 113

CHILDRESS
117.0 CDS
Chan 117

WICHITA FALLS
112.7 SPS
Chan 74

TEXICO
112.2 TXO
Chan 59

LUBBOCK
109.2 LBB
Chan 29

CORONA
115.5 CNX
Chan 102

MAVERICK
113.1 TTT
Chan 78

ABILENE
113.7 ABI
Chan 84

MILLSAP
117.7 MQP
Chan 124

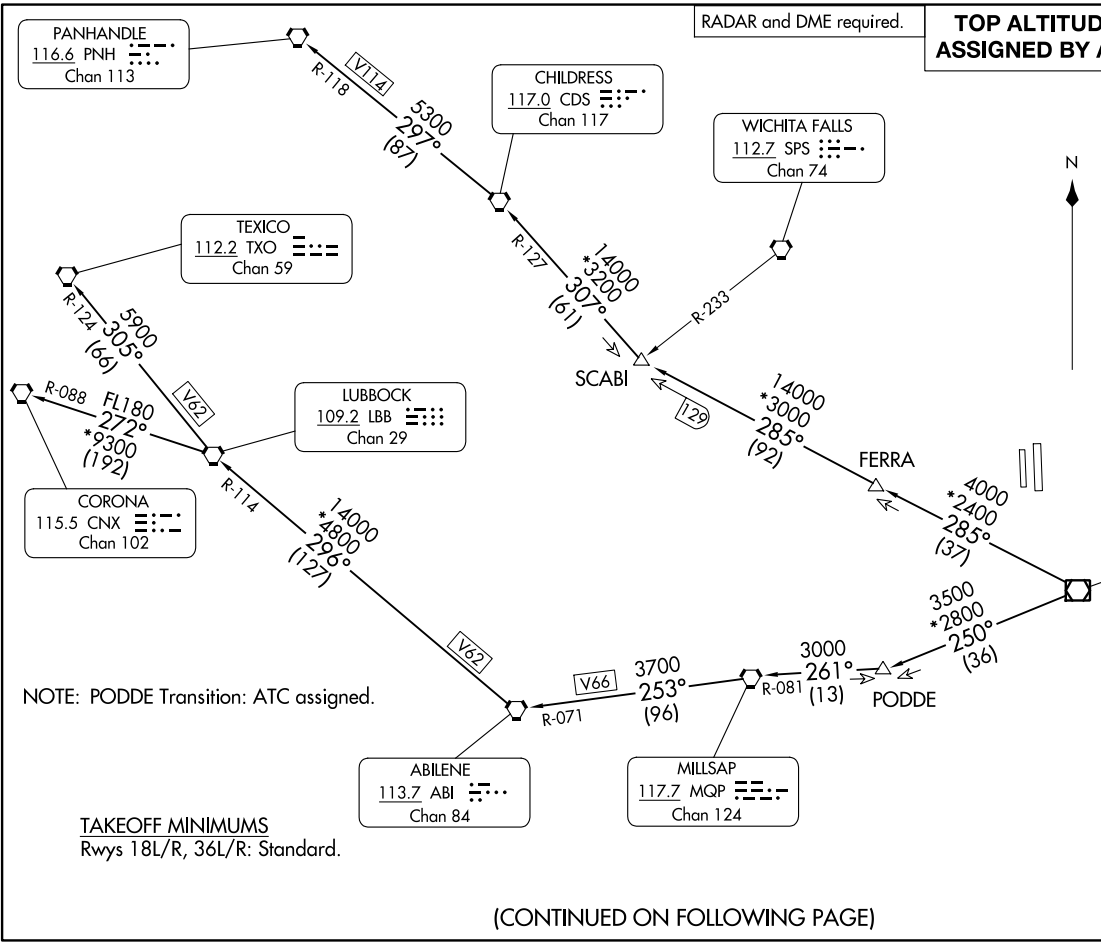
NOTE: PODDE Transition: ATC assigned.

TAKEOFF MINIMUMS
Rwys 18L/R, 36L/R: Standard.

N

WORTH ONE DEPARTURE
(WORTH1.TTT) 251AN24

DENTON, TEXAS
DENTON ENTERPRISE (DTEO)



WORTH ONE DEPARTURE



DEPARTURE ROUTE DESCRIPTION

When entering controlled airspace, fly assigned heading for RADAR vectors to appropriate route. Maintain ATC assigned altitude.

ABILENE TRANSITION (WORTH1.ABI): From over TTT VOR/DME on TTT R-250 to PODDE, then on MQP R-081 to MQP VORTAC, then on MQP R-253 and ABI R-071 to ABI VORTAC.

CHILDRESS TRANSITION (WORTH1.CDS): From over TTT VOR/DME on TTT R-285 to SCABI, then on CDS R-127 to CDS VORTAC.

CORONA TRANSITION (WORTH1.CNX): From over TTT VOR/DME on TTT R-250 to PODDE, then on MQP R-081 to MQP VORTAC, then on MQP R-253 and ABI R-071 to ABI VORTAC, then on ABI R-296 and LBB R-114 to LBB VORTAC, then on LBB R-272 and CNX R-088 to CNX VORTAC.

LUBBOCK TRANSITION (WORTH1.LBB): From over TTT VOR/DME on TTT R-250 to PODDE, then on MQP R-081 to MQP VORTAC, then on MQP R-253 and ABI R-071 to ABI VORTAC, then on ABI R-296 and LBB R-114 to LBB VORTAC.

PANHANDLE TRANSITION (WORTH1.PNH): From over TTT VOR/DME on TTT R-285 to SCABI, then on CDS R-127 to CDS VORTAC, then on CDS R-297 and PNH R-118 to PNH VORTAC.

PODDE TRANSITION (WORTH1.PODDE): From over TTT VOR/DME on TTT R-250 to PODDE.

TEXICO TRANSITION (WORTH1.TXO): From over TTT VOR/DME on TTT R-250 to PODDE, then on MQP R-081 to MQP VORTAC, then on MQP R-253 and ABI R-071 to ABI VORTAC, then on ABI R-296 and LBB R-114 to LBB VORTAC, then on LBB R-305 and TXO R-124 to TXO VORTAC.

SC-2, 26 DEC 2024 to 23 JAN 2025

SC-2, 26 DEC 2024 to 23 JAN 2025

WORTH ONE DEPARTURE