


LOC I-UUR 111.1	APP CRS 176°	Rwy Idg TDZE Apt Elev	6500 414 425
---------------------------	------------------------	-----------------------------	---

ILS or LOC RWY 18

ROSCOE TURNER (CRX)

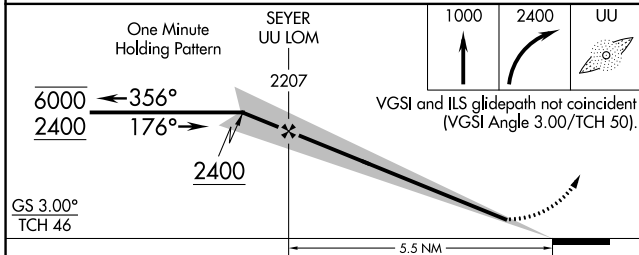
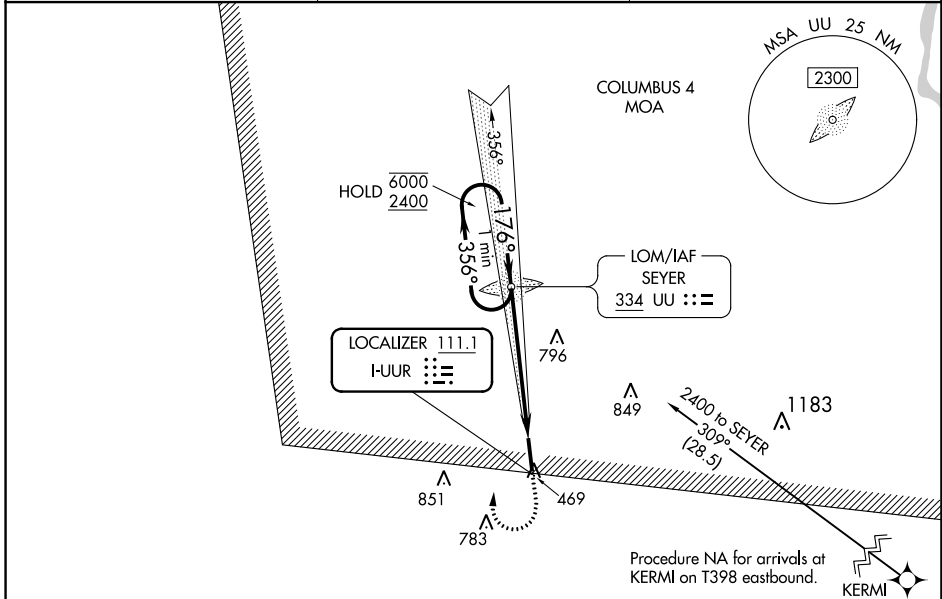
ADF required. RNAV 1-GPS.


Autopilot coupled approach NA below 1040.
For inop ALS, increase S-LOC 18 Cats C and D visibility to 1¼ SM.

MALSR 

MISSED APPROACH: Climb to 1000 then climbing right turn to 2400 direct UU LOM and hold, continue climb-in-hold to 2400.

AWOS-3PT 118.675	MEMPHIS CENTER 135.9 273.55	UNICOM 122.8 (CTAF) 1
----------------------------	---------------------------------------	---------------------------------



ELEV 425	TDZE 414
176°	
	
6500 x 100	
0.3% UP	
36	
MIRL Rwy 18-36 1	
FAF to MAP 5.5 NM	
Knots	60 90 120 150 180
Min:Sec	5:30 3:40 2:45 2:12 1:50

CATEGORY	A	B	C	D
S-ILS 18	614-½ 200 (200-½)			
S-LOC 18	1020-½	606 (600-½)	1020-1¾	606 (600-1¾)
C CIRCLING	1020-1	595 (600-1)	1100-2 675 (700-2)	1160-2¼ 735 (800-2¼)

SC-4, 26 DEC 2024 to 23 JAN 2025

SC-4, 26 DEC 2024 to 23 JAN 2025