

WAAS CH <b>48832</b> <b>W36A</b>	APP CRS <b>356°</b>	Rwy Idg TDZE <b>425</b> Apt Elev <b>425</b>	<b>6500</b>
--	------------------------	---	-------------

# RNAV (GPS) RWY 36

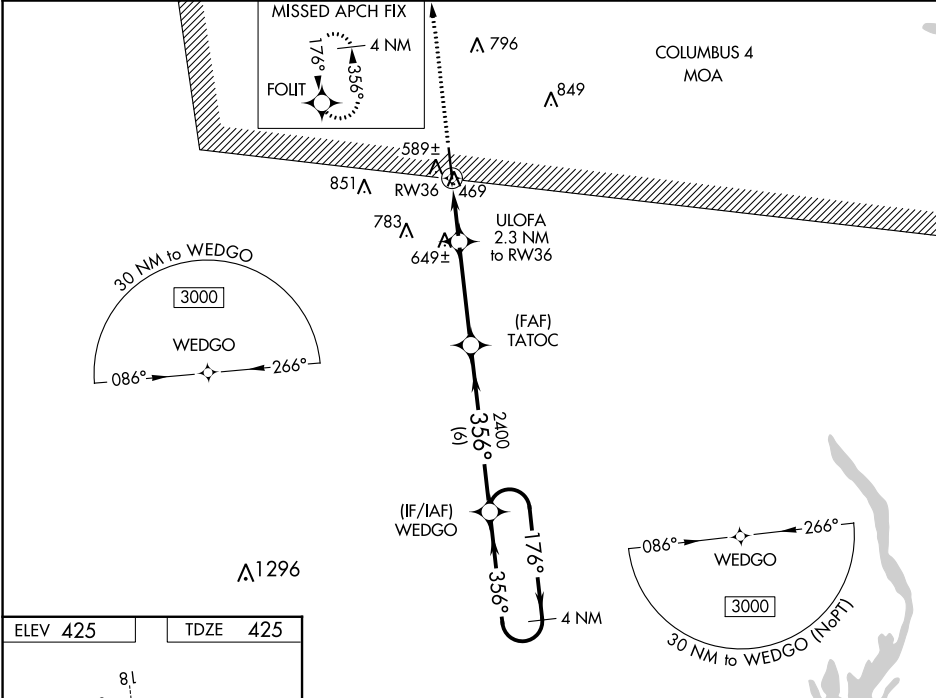
ROSCOE TURNER (CRX)

RNP APCH-GPS

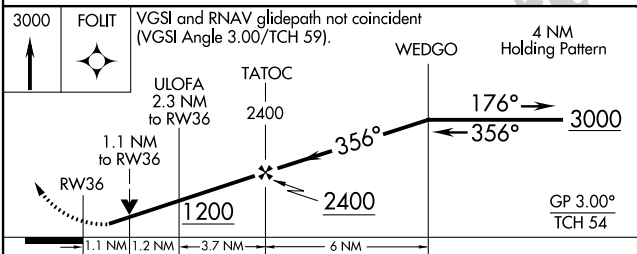
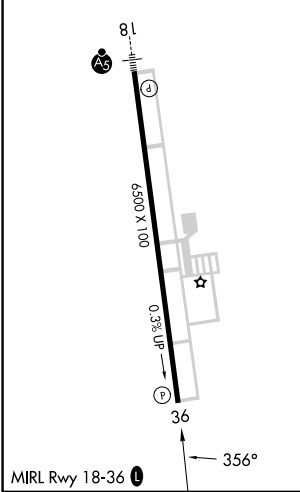
▼ For uncompensated Baro-VNAV systems, LNAV/VNAV NA below -15°C or above 54°C. When local altimeter setting not received, use Selmer altimeter setting and increase LPV DA to 764 feet and all visibilities ½ SM. Increase LNAV/VNAV DA to 818 feet and all visibilities ½ SM. Increase all MDAs 80 feet and LNAV visibility Cats C and D ¼ SM, and Circling visibility Cats C and D ½ SM. Baro-VNAV and VDP NA when using Selmer altimeter setting. Rwy 36 helicopter visibility reduction below ¾ SM NA.

MISSED APPROACH:  
Climb to 3000 direct FOLIT and hold.

AWOS-3PT <b>118.675</b>	MEMPHIS CENTER <b>135.9 273.55</b>	UNICOM <b>122.8 (CTAF)</b>
----------------------------	---------------------------------------	-------------------------------



ELEV <b>425</b>	TDZE <b>425</b>
-----------------	-----------------



CATEGORY	A	B	C	D
LPV DA		696-7/8	271 (300-7/8)	
LNAV/VNAV DA		750-1	325 (400-1)	
LNAV MDA	840-1	415 (500-1)	840-1½	415 (500-1½)
CIRCLING	920-1	495 (500-1)	1100-2 675 (700-2)	1160-2¼ 735 (600-2¼)

SC-4, 26 DEC 2024 to 23 JAN 2025

SC-4, 26 DEC 2024 to 23 JAN 2025