

LOC/DME I-PVG 110.75 Chan 44 (Y)	APP CRS 102°	Rwy Idg TDZE 28 Apt Elev 28	5350
--	------------------------	---	-------------

ILS or LOC RWY 10

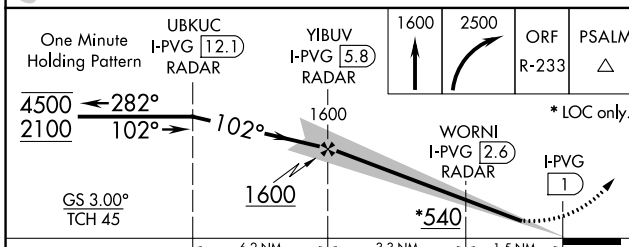
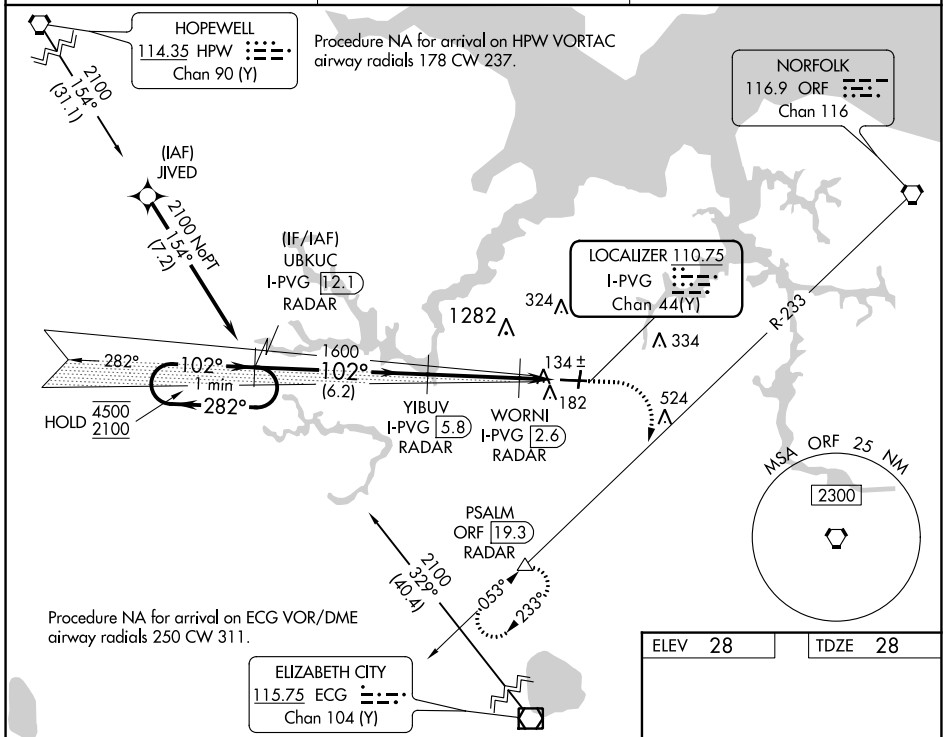
HAMPTON ROADS EXEC (PVG)

RNAV 1-GPS or RADAR required for procedure entry. DME or RADAR required.

V Circling NA to Rwy's 2 and 20. Circling NA for Cat C north of Rwy's 10-28.
NA Autopilot coupled approach NA below 800.

MISSED APPROACH: Climb to 1600 then climbing right turn to 2500 on ORF VORTAC R-233 to PSALM/ORF 19.3 DME/RADAR and hold.

AWOS-3PT 118.375	NORFOLK APP CON 118.9 353.7	UNICOM 122.725 (CTAF) 1
----------------------------	---------------------------------------	---



ELEV 28	TDZE 28
---------	---------

HIRL Rwy 10-28	1
REIL Rwy's 10 and 28	1
MIRL Rwy's 2-20	1
FAF to MAP 4.8 NM	
Knots	60 90 120 150 180
Min:Sec	4:48 3:12 2:24 1:55 1:36

NE-3, 26 DEC 2024 to 23 JAN 2025

NE-3, 26 DEC 2024 to 23 JAN 2025