

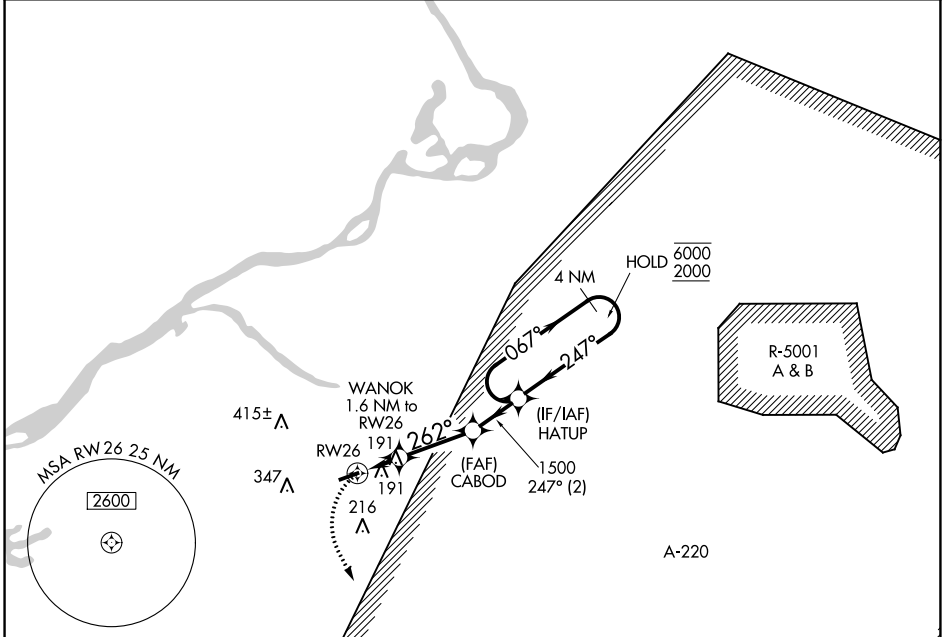
APP CRS	Rwy Idg	<b>3881</b>
<b>262°</b>	TDZE	<b>53</b>
	Apt Elev	<b>53</b>

# RNAV (GPS) RWY 26

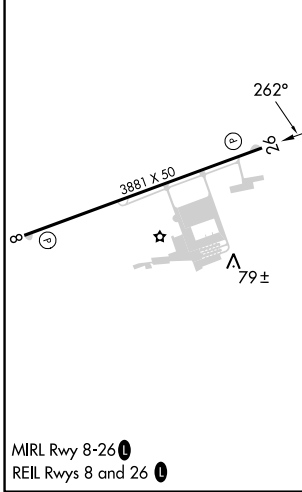
SOUTH JERSEY RGNL (VAY)

RNP APCH.		MISSED APPROACH: Climbing left turn to 2000 direct INNEZ and hold.	
Rwy 26 helicopter visibility reduction below 1 SM NA. Procedure NA at night.			

ASOS	MC GUIRE APP CON	UNICOM	<b>123.3</b>
<b>119.325</b>	<b>126.475 363.8</b>	<b>122.8 (CTAF)</b>	



ELEV 53	TDZE 53
---------	---------



	2000 INNEZ		HATUP	4 NM Holding Pattern
	△		067° → 6000	← 247° 2000
	WANOK	CABOD	HATUP	
	1.6 NM to RWY 26	1500	247°	
	600	3.00° TCH 40		
	1.6 NM	2.8 NM	2 NM	
CATEGORY	A	B	C	D
LNAV MDA	480-1	427 (500-1)	NA	
CIRCLING	520-1	540-1	NA	
	467 (500-1)	487 (500-1)		

NE-2, 26 DEC 2024 to 23 JAN 2025

NE-2, 26 DEC 2024 to 23 JAN 2025