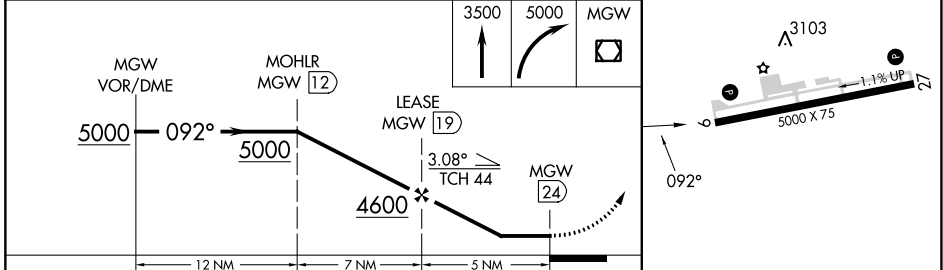
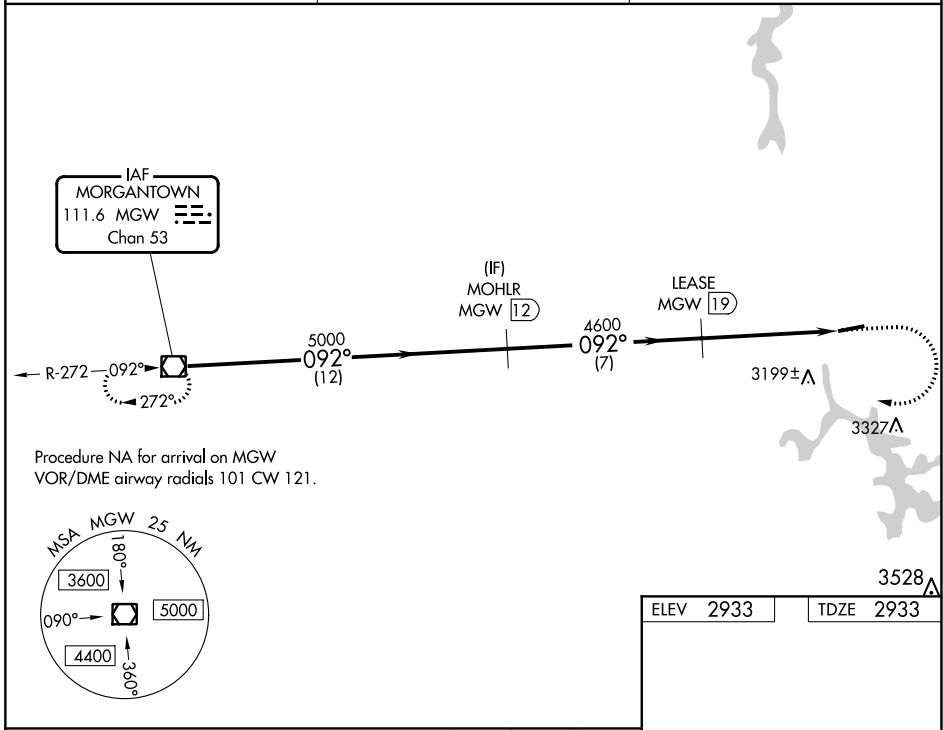


VOR/DME MGW 111.6 Chan 53	APP CRS 092°	Rwy Idg TDZE Apt Elev 5000 2933 2933
-----------------------------------------------	------------------------	--------------------------------------------------------------------------

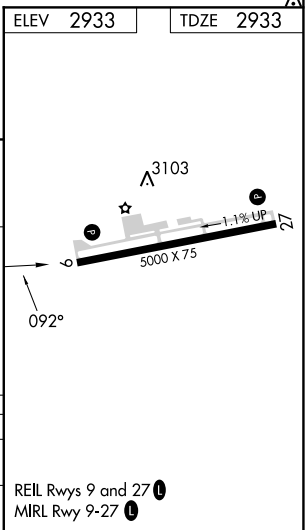
VOR RWY 9
GARRETT COUNTY (2G4)

DME required.	MISSED APPROACH: Climb to 3500 then climbing right turn to 5000 direct MGW VOR/DME and hold.
<p>T Rwy 09 helicopter visibility reduction below 3/4 SM NA. When local altimeter setting not received, use Morgantown altimeter setting and increase all MDA 300 feet; increase S-09 Cat B and Circling Cat A and B visibility 1/4 SM and S-09 and Circling Cat C visibility 1 SM.</p>	

AWOS-3 120.125	CLARKSBURG APP CON * 119,425 284,65	UNICOM 123.0 (CTAF)
--------------------------	-----------------------------------------------	-------------------------------



CATEGORY	A	B	C	D
S-09	3460-1	527 (600-1)	3460-1 1/2 527 (600-1 1/2)	NA
CIRCLING	3460-1	527 (600-1)	3500-1 1/2 567 (600-1 1/2)	NA



NE-3, 26 DEC 2024 to 23 JAN 2025

NE-3, 26 DEC 2024 to 23 JAN 2025