

WAAS CH 56602 W25A	APP CRS 248°	Rwy Idg 5004 TDZE 949 Apt Elev 949
--	------------------------	---

RNAV (GPS) RWY 25

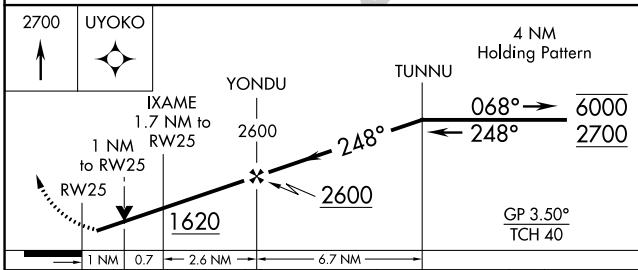
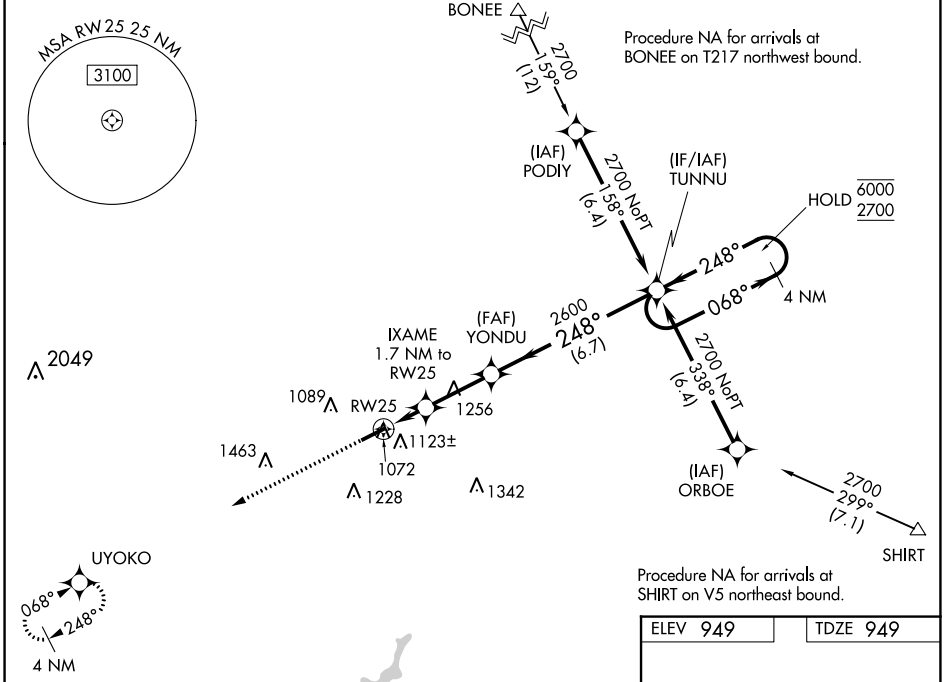
GREENE COUNTY/LEWIS A JACKSON RGNL (GDK)

RNP APCH - GPS.

⚠ For uncompensated Baro-VNAV systems, LNAV/VNAV NA below -16°C or above 54°C.
⚠ Rwy 25 helicopter visibility reduction below ¼ SM NA. VDP and Baro-VNAV NA when using Dayton/Wright Brothers altimeter setting. When local altimeter setting not received, use Dayton/Wright Brothers altimeter setting: increase LPV DA to 1249 feet; increase LNAV/VNAV DA to 1252 feet; increase all MDA 40 feet and LNAV visibility Cat C ½ SM.

MISSED APPROACH:
Climb to 2700 direct UYOKO and hold.

AWOS-3 118.525	COLUMBUS APP CON 118.85 269.275	UNICOM 122.725 (CTAF) 0
--------------------------	---	-----------------------------------



ELEV 949	TDZE 949
----------	----------

5004 X 75
0.8% UP
248°

MIRL Rwy 7-25 0
REIL Rwy 7 and 25 0

CATEGORY	A	B	C	D
LPV DA	1219-1	270 (300-1)		NA
LNAV/VNAV DA	1222-1	273 (300-1)		NA
LNAV MDA	1340-1	391 (400-1)	1340-1 1/8 391 (400-1 1/8)	NA
CIRCLING	1480-1	531 (600-1)	1560-1 3/4 611 (700-1 3/4)	NA

EC-2, 26 DEC 2024 to 23 JAN 2025

EC-2, 26 DEC 2024 to 23 JAN 2025