

LOC I-PXE 109.15	APP CRS 005°	Rwy Idg 5004
		TDZE 417
		Apt Elev 418

ILS or LOC RWY 36

PERRY-HOUSTON COUNTY (PXE)

DME or RADAR required.

⚠ Autopilot coupled approach NA below 900. Rwy 36 helicopter visibility reduction below 3/4 SM NA. Inop table does not apply to S-ILS-36. When local altimeter setting not received, use Middle Georgia Rgnl altimeter setting: increase all DA to 705 feet; increase all MDAs 40 feet and Circling visibility Cats C and D 1/4 SM. For inop ALS, increase S-LOC 36 Cats A/B visibility to 1 SM and Cats C/D to 1 3/8 SM. For inop ALS when using Middle Georgia Rgnl altimeter setting, increase S-ILS all Cats visibility to 3/8 SM and S-LOC 36 Cats A/B visibility to 1 SM.

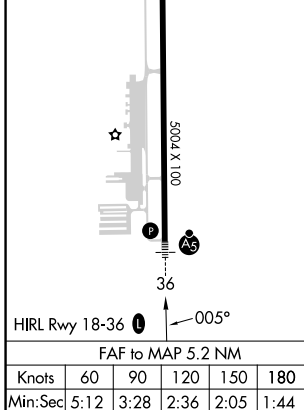
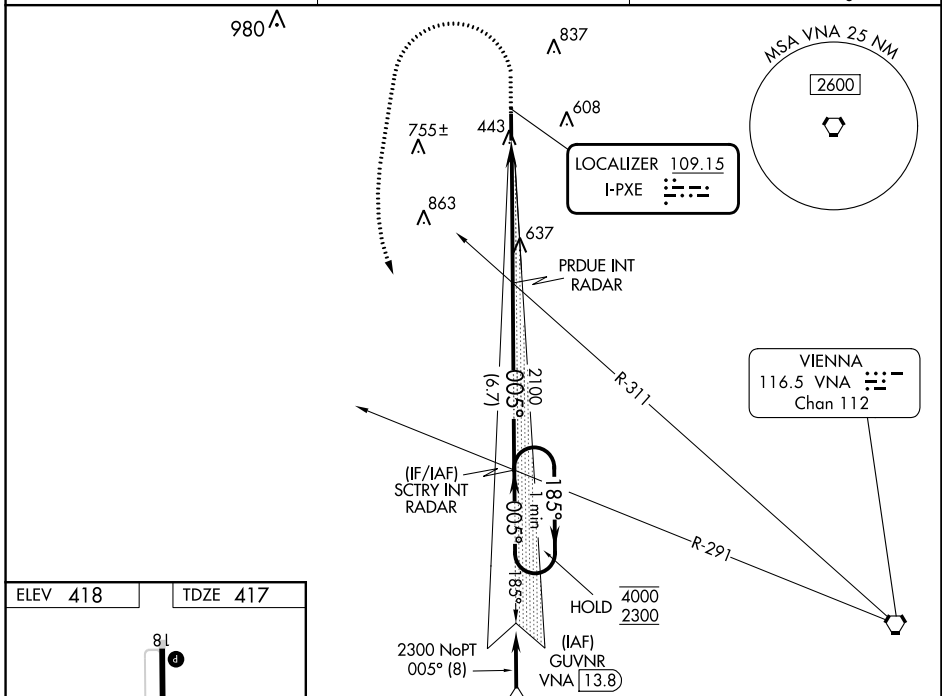


MISSED APPROACH: Climb to 1100 then climbing left turn to 2300 on heading 195° and VNA R-291 to SCTRY INT/ RADAR and hold.

AWOS-3
123.825

ATLANTA APP CON ★
124.2 279.6

UNICOM
122.725 (CTAF) 0



1100	2300	VNA R-291	SCTRY INT	VGSI and ILS glidepath not coincident (VGSI Angle 3.00/TCH 30).	One Minute Holding Pattern
hdg 195°					
				PRDUE INT RADAR 2100	SCTRY INT RADAR
				005°	185°
				2100	4000
				5.2 NM	6.7 NM
CATEGORY	A	B	C	D	
S-ILS 36	667-3/4 250 (300-3/4)				
S-LOC 36	900-3/4	483 (500-3/4)	900-1	483 (500-1)	
CIRCLING	900-1	482 (500-1)	1140-2 722 (800-2)	1280-2 3/4 862 (900-2 3/4)	

GS 3.00° TCH 45

SE-4, 26 DEC 2024 to 23 JAN 2025

SE-4, 26 DEC 2024 to 23 JAN 2025