

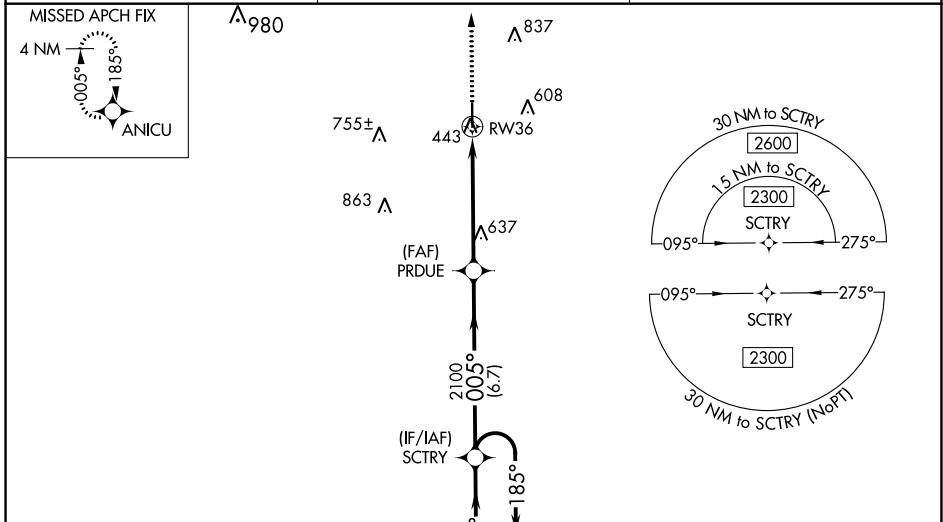
WAAS CH <b>86805</b> <b>W36A</b>	APP CRS <b>005°</b>	Rwy ldg TDZE Apt Elev	<b>5004</b> <b>417</b> <b>418</b>
--	------------------------	-----------------------------	---

# RNAV (GPS) RWY 36

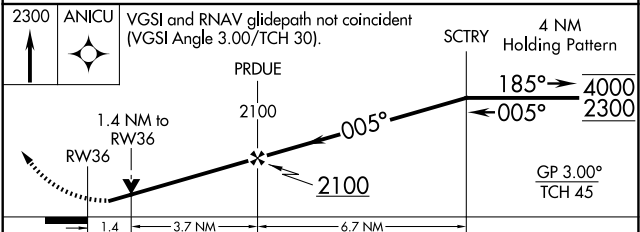
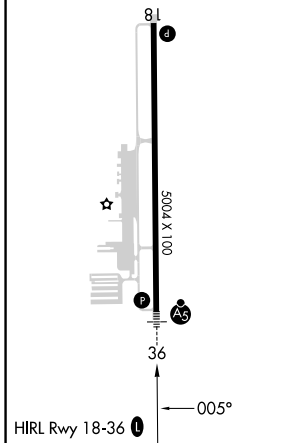
PERRY-HOUSTON COUNTY (PXE)

RNP APCH-GPS.	MALSRS 	MISSED APPROACH: Climb to 2300 direct ANICU and hold.
---------------	------------	--

AWOS-3 <b>123.825</b>	ATLANTA APP CON ★ <b>124.2 279.6</b>	UNICOM <b>122.725 (CTAF) 0</b>
--------------------------	---	-----------------------------------



ELEV 418	TDZE 417
----------	----------



CATEGORY	A	B	C	D
LPV DA		667-3/4	250 (300-3/4)	
LNAV/VNAV DA		667-3/4	250 (300-3/4)	
LNAV MDA	900-3/4	483 (500-3/4)	900-1	483 (500-1)
<b>C</b> CIRCLING	900-1	482 (500-1)	1140-2 722 (800-2)	1280-2 3/4 862 (900-2 3/4)