

WAAS CH 78304 W21A	APP CRS 206°	Rwy Idg 5001 TDZE 485 Apt Elev 485
--	------------------------	---

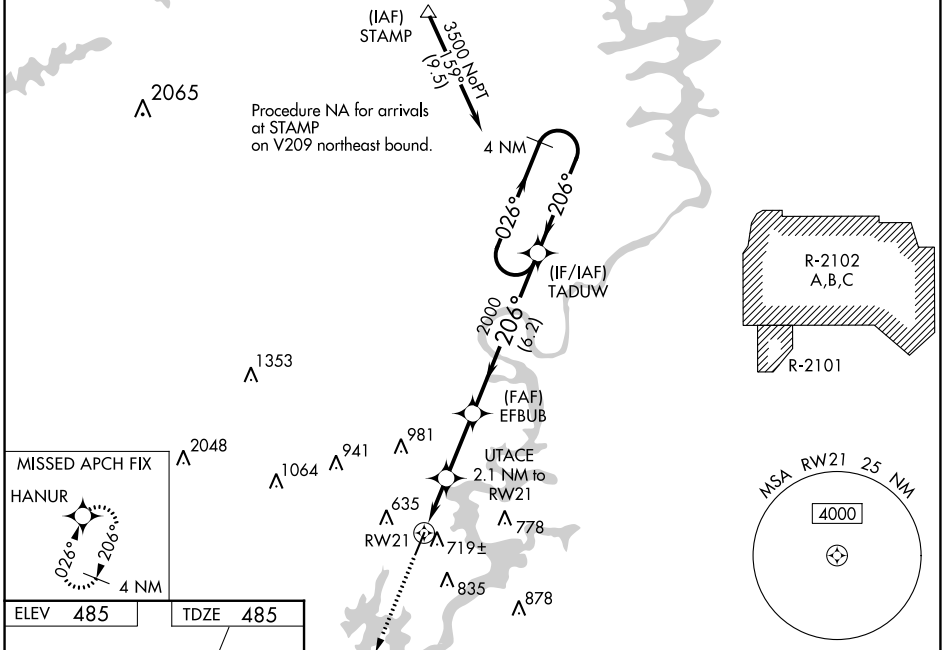
RNAV (GPS) RWY 21

ST CLAIR COUNTY (P.L.R.)

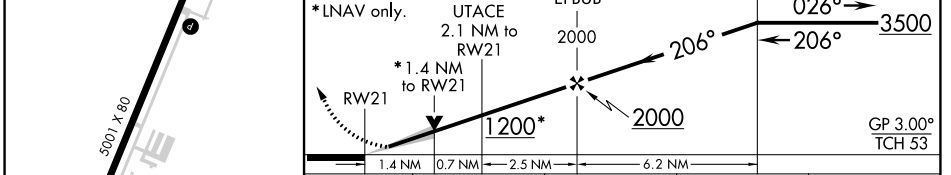
⚠ **⚠** DME/DME RNP-0.3 NA. When local altimeter setting not received, use Anniston altimeter setting and increase LPV DA to 799 feet and all Cats visibility to 1, increase LNAV/VNAV DA to 964 feet and all visibilities to 1½, increase all MDA 80 feet and LNAV Cat C/D to 1¼ and Circling Cat C to 2½ and Cat D to 3. For uncompensated Baro-VNAV systems, LNAV/VNAV NA below -15°C (5°F) or above 54°C (130°F). Baro-VNAV and VDP NA when using Anniston altimeter setting.

MISSED APPROACH: Climb to 4000 direct HANUR and hold, continue climb-in-hold to 4000.

AWOS-3P 119.625	BIRMINGHAM APP CON 123.8 256.8	GCO 121.725	UNICOM 123.05 (CTAF) 📻
---------------------------	--	-----------------------	---



ELEV 485	TDZE 485
----------	----------



CATEGORY	A	B	C	D
LPV DA		735-¾	250 (300-¾)	
LNAV/VNAV DA		900-1¾	415 (500-1¾)	
LNAV MDA	980-1	495 (500-1)	980-1¾	495 (500-1¾)
CIRCLING	1180-1	695 (700-1)	1240-2¼ 755 (800-2¼)	1340-2¾ 855 (900-2¾)

SE-4, 26 DEC 2024 to 23 JAN 2025

SE-4, 26 DEC 2024 to 23 JAN 2025