

WAAS CH 70540 W03A	APP CRS 026°	Rwy Idg TDZE Apt Elev	4771 484 485
--	------------------------	-----------------------------	---

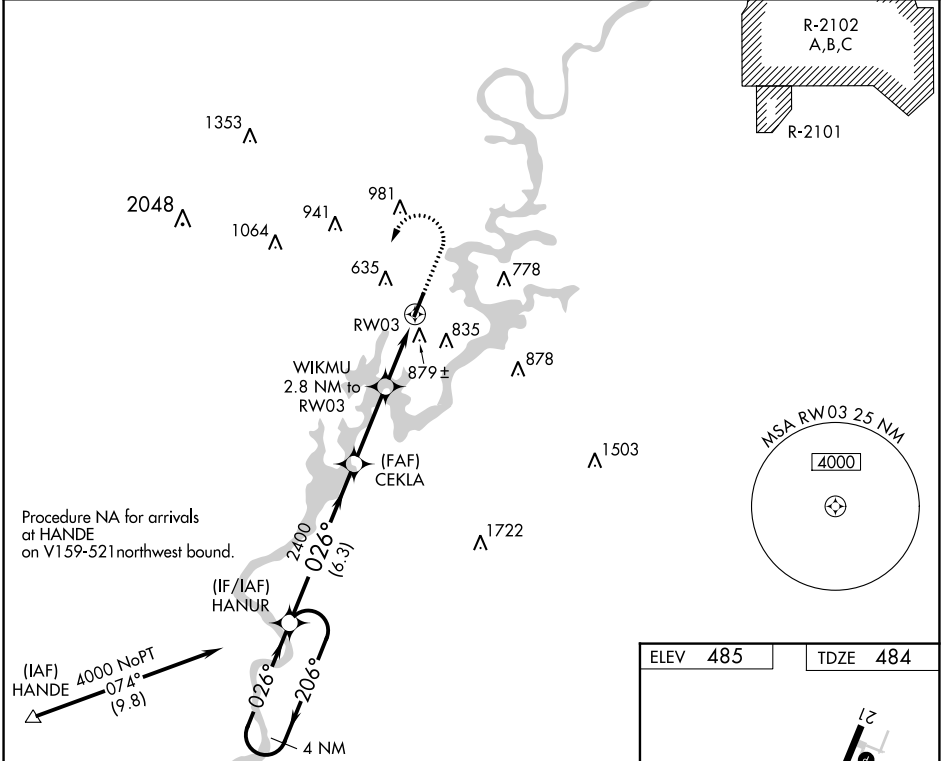
RNAV (GPS) RWY 3

ST CLAIR COUNTY (PLR)

⚠ DME/DME RNP-0.3 NA. VDP NA when using Anniston altimeter setting. Rwy 3, helicopter visibility reduction below 3/4 SM NA. When local altimeter setting not received, use Anniston altimeter setting and increase all DA 63 feet and all visibility 1/4 SM, increase all MDA 80 feet and LNAV Cat C/D visibility 1/8 SM and Circling Cat C/D 1/4 SM.

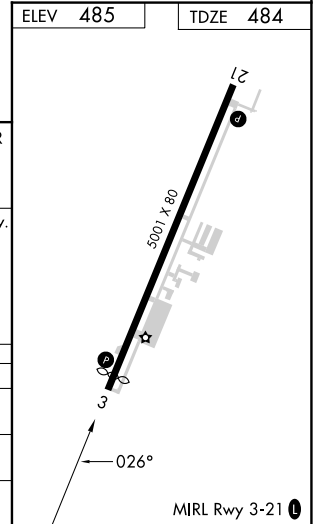
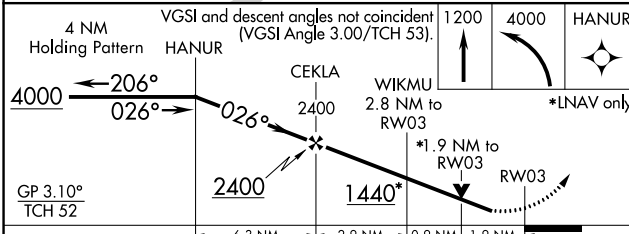
MISSED APPROACH: Climb to 1200, then climbing left turn to 4000 direct HANUR and hold, continue climb-in-hold to 4000.

AWOS-3P 119.625	BIRMINGHAM APP CON 123.8 256.8	GCO 121.725	UNICOM 123.05 (CTAF) 0
---------------------------	--	-----------------------	----------------------------------



Procedure NA for arrivals at HANDE on V159-521 northwest bound.

(IAF) HANDE 4000 NoPT
074° (9.8)



CATEGORY	A	B	C	D
LPV DA		835-1 1/8	351 (400-1 1/8)	
LNAV MDA	1140-1	656 (700-1)	1140-1 7/8	656 (700-1 7/8)
C CIRCLING	1180-1	695 (700-1)	1240-2 1/4 755 (800-2 1/4)	1340-2 3/4 855 (900-2 3/4)

SE-4, 26 DEC 2024 to 23 JAN 2025

SE-4, 26 DEC 2024 to 23 JAN 2025