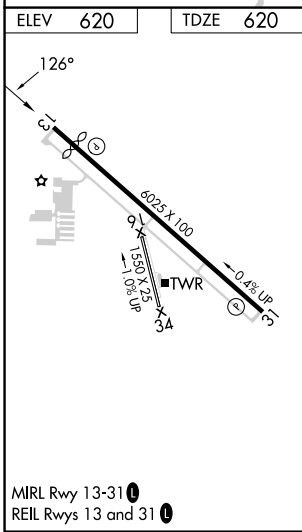
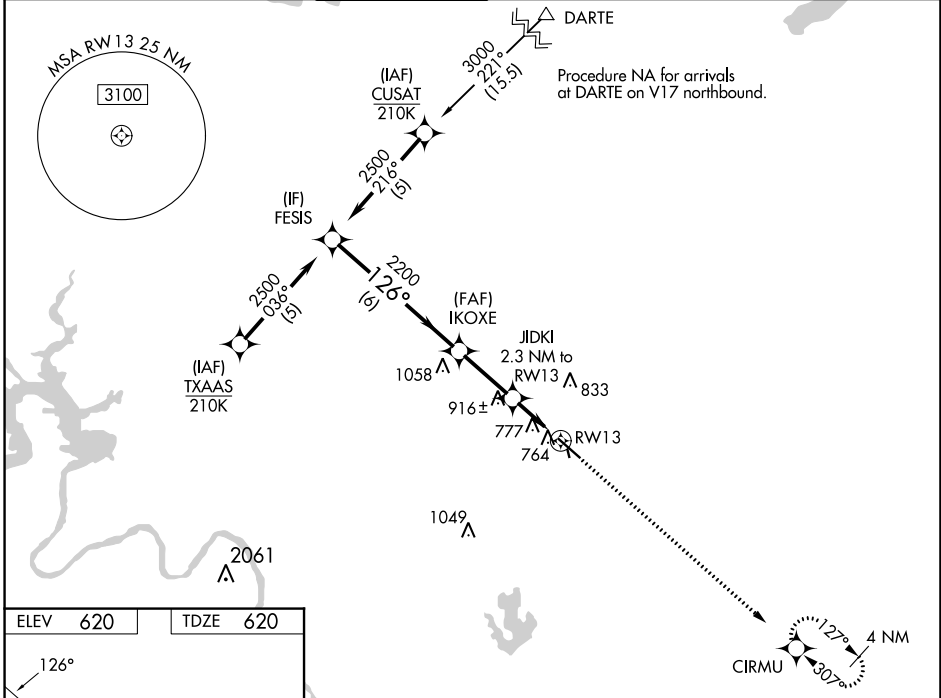


WAAS CH 63116 W13A	APP CRS 126°	Rwy Idg TDZE Apt Elev	5425 620 620
--	------------------------	-----------------------------	---

RNAV (GPS) RWY 13

AUSTIN EXEC (EDC)

RNP APCH - GPS.		<p>⚠ Circling NA to Rwy 16 and 34. Rwy 13 helicopter visibility reduction below 3/4 SM NA. For uncompensated Baro-VNAV systems, LNAV/VNAV NA below -16°C or above 54°C.</p>		<p>MISSED APPROACH: Climb to 2200 direct CIRMU and hold.</p>	
AWOS-3 118.825	AUSTIN APP CON 127.225 317.65	EXECUTIVE TOWER★ 120.3 (CTAF) 0	GND CON 119.45	CLNC DEL 126.025 (When twr closed)	UNICOM 122.975



	FESIS	IKOXE	JIDKI	RWY 13	CIRMU
	2500	2200	1380	2200	2200
		126°	126°	127°	307°
		6 NM	2.5 NM	1 NM	1.3 NM
CATEGORY	A	B	C	D	
LPV DA		870-3/4 250 (300-3/4)			
LNAV/VNAV DA		1080-1 3/8 460 (500-1 3/8)			
LNAV MDA	1080-1	460 (500-1)	1080-1 3/8	460 (500-1 3/8)	
CIRCLING	1140-1 520 (600-1)	1160-1 540 (600-1)	1280-1 3/4 660 (700-1 3/4)	1280-2 660 (700-2)	

SC-3, 26 DEC 2024 to 23 JAN 2025

SC-3, 26 DEC 2024 to 23 JAN 2025