

SEBRING, OHIO

AL-5893 (FAA)

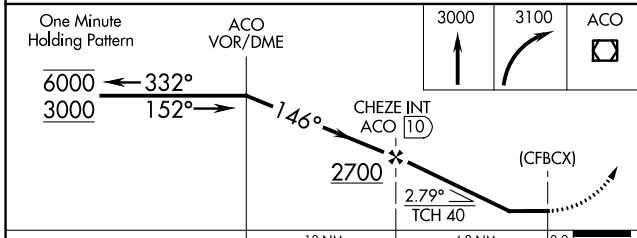
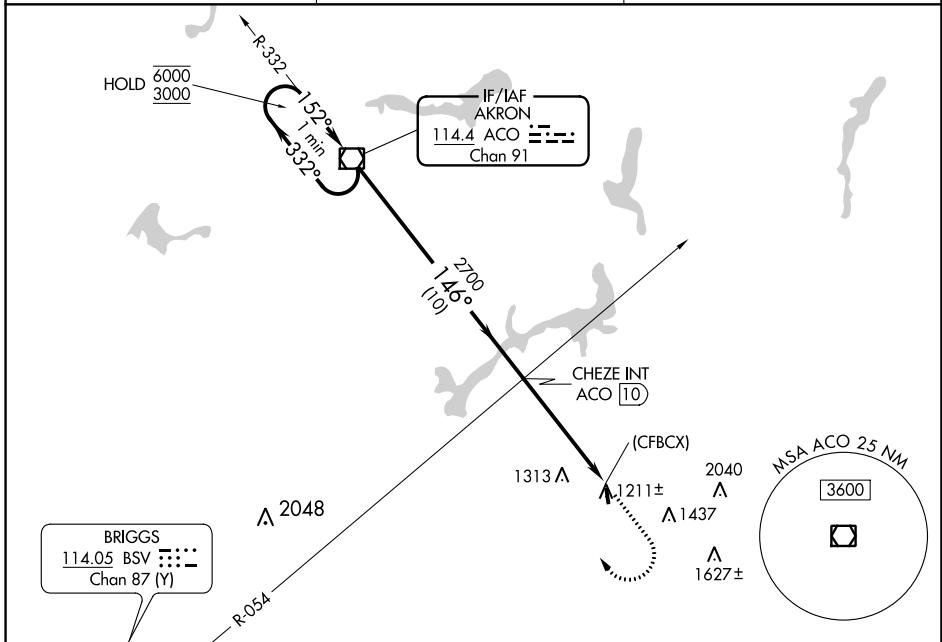
23334

VOR/DME ACO 114.4 Chan 91	APP CRS 146°	Rwy Idg 2768 TDZE 1188 Apt Elev 1188
---	------------------------	---

VOR RWY 18

TRI-CITY (3G6)

<p>▽ Procedure NA at night. Rwy 18 helicopter visibility reduction below 1 SM NA. Use Akron-Canton Rgnl altimeter setting, when not received, use Ravenna altimeter setting.</p> <p>△ NA</p>	<p>MISSED APPROACH: Climb to 3000 then climbing right turn to 3100 direct ACO VOR/DME and hold.</p>	
<p>CAK ASOS 121.05</p>	<p>CLEVELAND APP CON * 125.5 371.875</p>	<p>CTAF 122.9 0</p>



ELEV	1188	TDZE	1188
LIRL Rwy 18-36 0			
FAF to MAP 4.8 NM			
Knots	60	90	120 150 180
Min:Sec	4:48	3:12	2:24 1:55 1:36

CATEGORY	A	B	C	D
S-18	1680-1	492 (500-1)		NA
CIRCLING	1680-1 492 (500-1)	1800-1 612 (700-1)		NA

SEBRING, OHIO
Amdt 4A 17JUN21

40°54'N-81°00'W

VOR RWY 18

TRI-CITY (3G6)

EC-2, 26 DEC 2024 to 23 JAN 2025

EC-2, 26 DEC 2024 to 23 JAN 2025