

| | | |
|---------|----------|------|
| APP CRS | Rwy Idg | N/A |
| 360° | TDZE | N/A |
| | Apt Elev | 1357 |

RNAV (GPS)-B

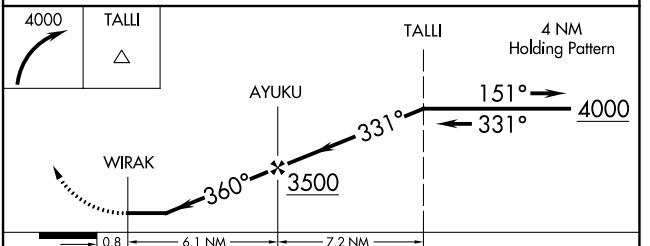
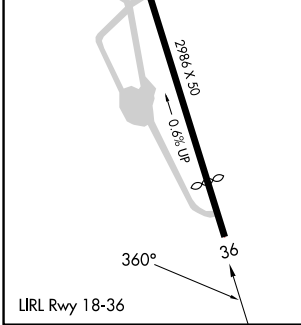
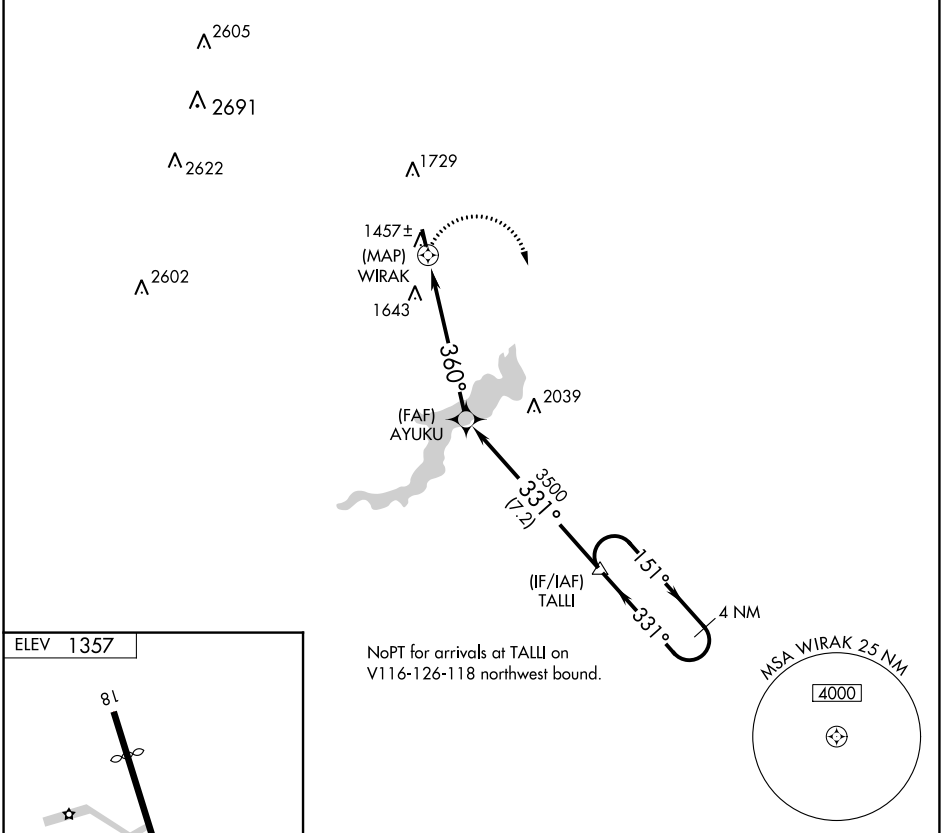
CHERRY RIDGE (N30)

NA DME/DME RNP-0.3 NA. Procedure NA at night. Obtain local altimeter setting on CTAF; when not received, use Wilkes-Barre/Scranton Intl altimeter setting, and increase MDA 320 feet and Cat A visibility 1/4 mile.

MISSED APPROACH: Climbing right turn to 4000 direct TALLI and hold.

WILKES-BARRE APP CON **120.95 256.7**

UNICOM **122.8 (CTAF)**



| CATEGORY | A | B | C | D |
|-------------------|-----------------------|---|----|---|
| C CIRCLING | 2080-1 723 (800-1) | | NA | |

NE-4, 26 DEC 2024 to 23 JAN 2025

NE-4, 26 DEC 2024 to 23 JAN 2025