

APP CRS	Rwy Idg	<b>3019</b>
<b>358°</b>	TDZE	<b>545</b>
	Apt Elev	<b>545</b>

# RNAV (GPS) RWY 35

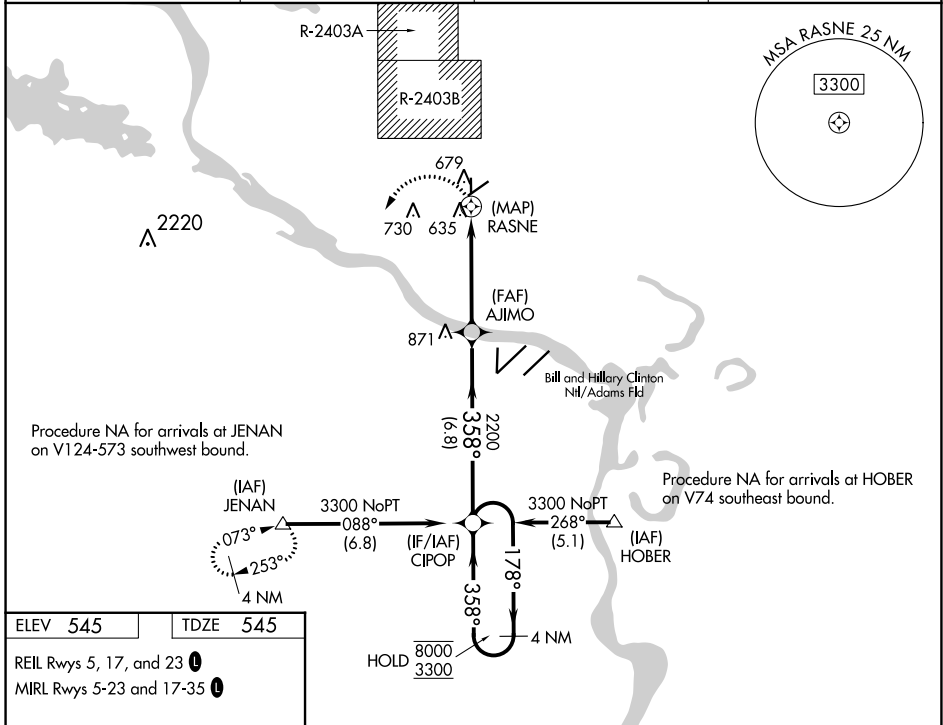
NORTH LITTLE ROCK MUNI (OR.K)

RNP APCH.

**▼** Circling NA for Cats B and C north of Rwy 5-23 when R-2403B is active.  
**▲** Rwy 35 helicopter visibility reduction below 3/4 SM NA.  
 Procedure NA when restricted area R-2403B is in use.

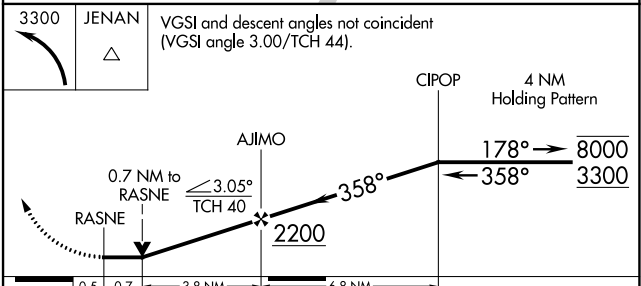
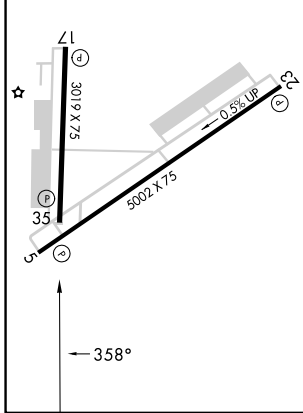
MISSED APPROACH: Climbing left turn to 3300 direct JENAN and hold.

AWOS-3PT <b>123.775</b>	LITTLE ROCK APP CON <b>119.5 306.2</b>	CLNC DEL <b>121.6</b>	UNICOM <b>123.075 (CTAF) 0</b>
----------------------------	---	--------------------------	-----------------------------------



ELEV	<b>545</b>	TDZE	<b>545</b>
------	------------	------	------------

REIL Rws 5, 17, and 23 **Ⓛ**  
 MIRL Rws 5-23 and 17-35 **Ⓛ**



CATEGORY	A	B	C	D
LNAV MDA	960-1	415 (500-1)	960-1 1/8 415 (500-1 1/8)	NA
<b>☑</b> CIRCLING	1040-1	495 (500-1)	1080-1 1/2 535 (600-1 1/2)	NA

SC-1, 26 DEC 2024 to 23 JAN 2025

SC-1, 26 DEC 2024 to 23 JAN 2025