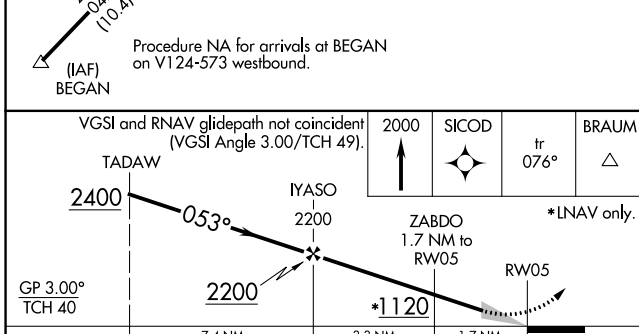
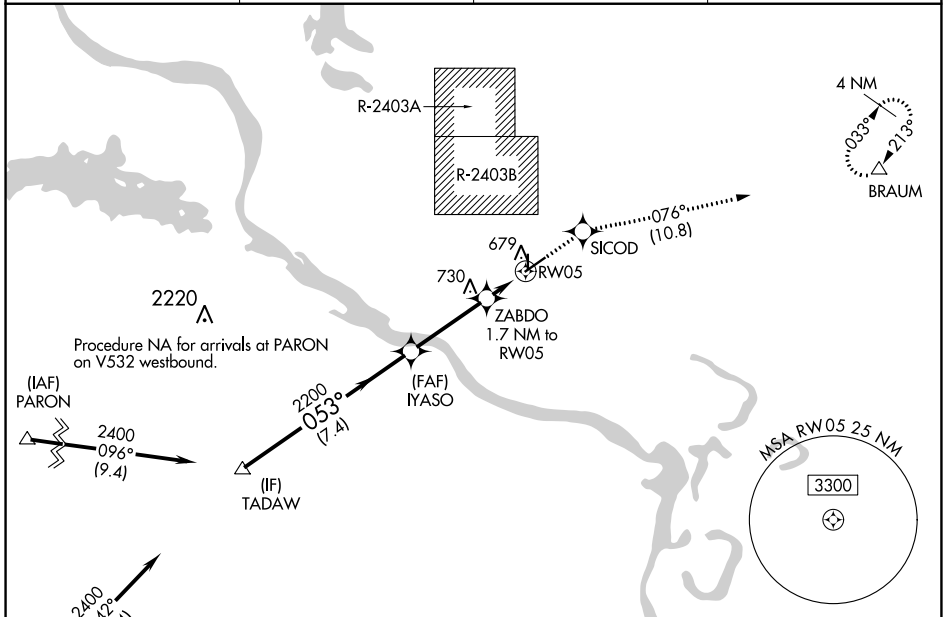


|  |                        |                             |   |
|--|------------------------|-----------------------------|---|
| WAAS<br>CH <b>58106</b><br><b>W05A</b> | APP CRS<br><b>053°</b> | Rwy Idg<br>TDZE<br>Apt Elev | <b>5002</b><br><b>541</b><br><b>545</b> |
|--|------------------------|-----------------------------|---|

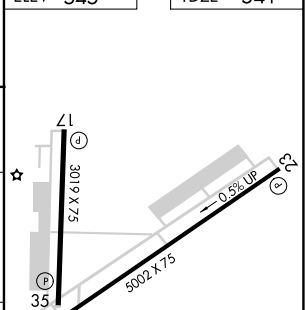
# RNAV (GPS) RWY 5

NORTH LITTLE ROCK MUNI (ORK)

|  |  |  |   |
|--|--|--|---|
| RNP APCH.  |  | MISSED APPROACH: Climb to 2000 direct SICOD and on track 076° to BRAUM and hold. |   |
| <p><b>⚠</b> Circling NA for Cats B and C north of Rwy 5-23 when restricted area R-2403B in use. For uncompensated Baro-VNAV systems, LNAV/VNAV NA below -16°C or above 54°C.</p> |  | AWOS-3PT<br><b>123.775</b>   | LITTLE ROCK APP CON<br><b>119.5 306.2</b> |
|  |  | CLNC DEL<br><b>121.6</b>   | UNICOM<br><b>123.075 (CTAF) 0</b>         |



|          |          |
|----------|----------|
| ELEV 545 | TDZE 541 |
|----------|----------|



| CATEGORY          | A        | B              | C                             | D  |
|-------------------|----------|----------------|-------------------------------|----|
| LPV DA            | 854-7/8  | 313 (400-7/8)  |                               | NA |
| LNAV/VNAV DA      | 986-13/8 | 445 (500-13/8) |                               | NA |
| LNAV MDA          | 1000-1   | 459 (500-1)    | 1000-13/8<br>459 (500-13/8)   | NA |
| <b>C</b> CIRCLING | 1060-1   | 515 (600-1)    | 1080-1 1/2<br>535 (600-1 1/2) | NA |

REL Rws 5, 17, and 23 0  
MIRL Rws 5-23 and 17-35 0

SC-1, 26 DEC 2024 to 23 JAN 2025

SC-1, 26 DEC 2024 to 23 JAN 2025