

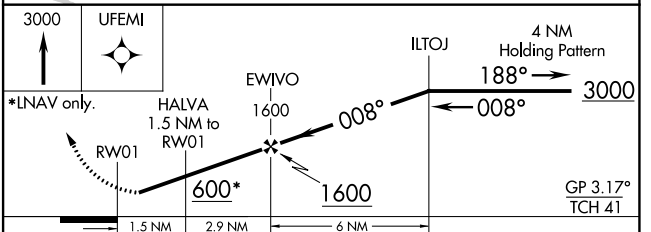
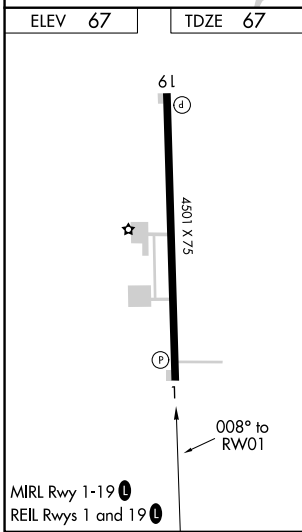
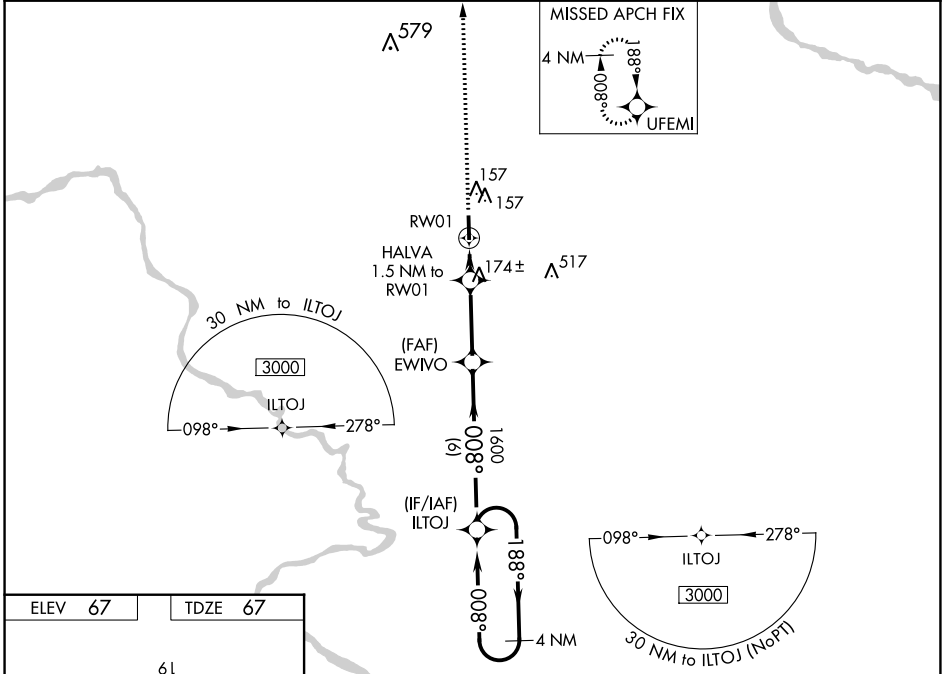
WAAS CH <b>70637</b> <b>W01A</b>	APP CRS <b>008°</b>	Rwy Idg <b>4501</b> TDZE <b>67</b> Apt Elev <b>67</b>
--	------------------------	---

**RNAV (GPS) RWY 1**  
TRI-COUNTY AT HENRY JOYNER FLD (A.SJ)

**⚠** DME/DME RNP-0.3 NA. Night Landing: Rwy 1 NA. When local altimeter setting not received, use Franklin altimeter setting and increase all DA 67 feet and all MDA 80 feet; increase LPV all Cats visibility 1/8 mile, LNAV Cats C/D visibility 3/8 mile and Circling Cat D visibility 1/4 mile. Baro-VNAV NA when using Franklin altimeter setting. For uncompensated Baro-VNAV systems, LNAV/VNAV NA below -15°C (5°F) or above 54°C (130°F). Helicopter visibility reduction below 1 SM NA.

**MISSED APPROACH:**  
Climb to 3000 direct UFEMI and hold, continue climb-in-hold to 3000.

AWOS-3 <b>119.075</b>	WASHINGTON CENTER <b>123.85 279.65</b>	UNICOM <b>122.8</b> (CTAF) <b>📻</b>
--------------------------	---	--



CATEGORY	A	B	C	D
LPV DA	359-1	292 (300-1)		NA
LNAV/VNAV DA	322-1	255 (300-1)		NA
LNAV MDA	440-1		373 (400-1)	
<b>C</b> CIRCLING	580-1	513 (600-1)	580-1½ 513 (600-1½)	820-2½ 753 (800-2½)

SE-2, 26 DEC 2024 to 23 JAN 2025

SE-2, 26 DEC 2024 to 23 JAN 2025