

WAAS CH <b>53741</b> <b>W30A</b>	APP CRS <b>307°</b>	Rwy Idg TDZE <b>262</b> Apt Elev <b>273</b>	<b>4553</b>
--	------------------------	---	-------------

# RNAV (GPS) RWY 30

BEEVILLE MUNI (BEA)

RNP APCH.

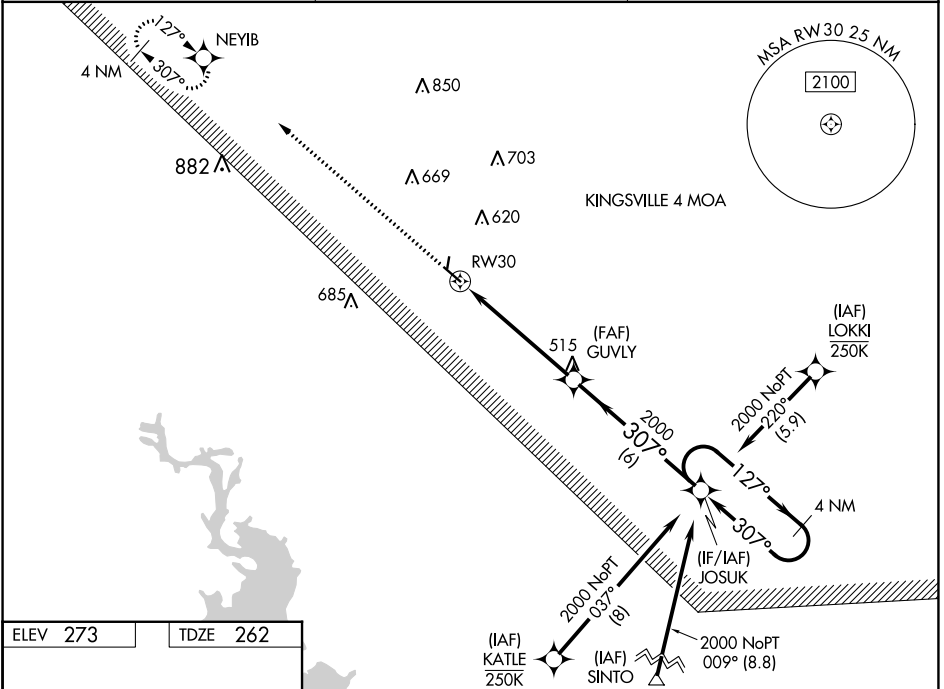
**▼** For uncompensated Baro-VNAV systems, LNAV/VNAV NA below -15°C (5°F) or above 54°C (130°F). Circling Rwy 18 and 36 NA at night.  
**▲** Rwy 30 helicopter visibility reduction below 3/4 SM NA.

MISSED APPROACH: Climb to 2000 direct NEYIB and hold.

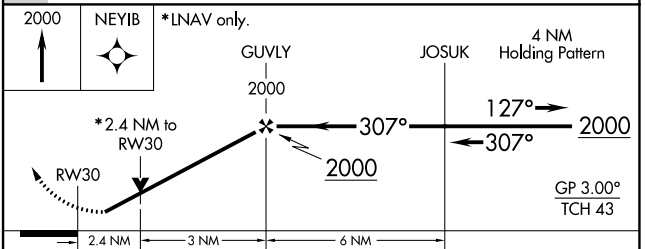
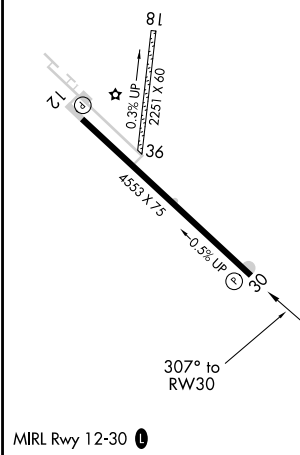
AWOS-3  
**118.675**

HOUSTON CENTER  
**134.6 322.5**

UNICOM  
**122.8 (CTAF) 0**



ELEV 273	TDZE 262
----------	----------



CATEGORY	A	B	C	D
LPV DA	517-1	255 (300-1)		NA
LNAV/VNAV DA	540-1	278 (300-1)		NA
LNAV MDA	1060-1 798 (800-1)	1060-1¼ 798 (800-1¼)	1060-2½ 798 (800-2½)	NA
<b>C</b> CIRCLING	1060-1 787 (800-1)	1060-1¼ 787 (800-1¼)	1060-2½ 787 (800-2½)	NA