

WAAS CH <b>78331</b> <b>W36A</b>	APP CRS <b>359°</b>	Rwy Idg TDZE Apt Elev	<b>3899</b> <b>680</b> <b>684</b>
--	------------------------	-----------------------------	---

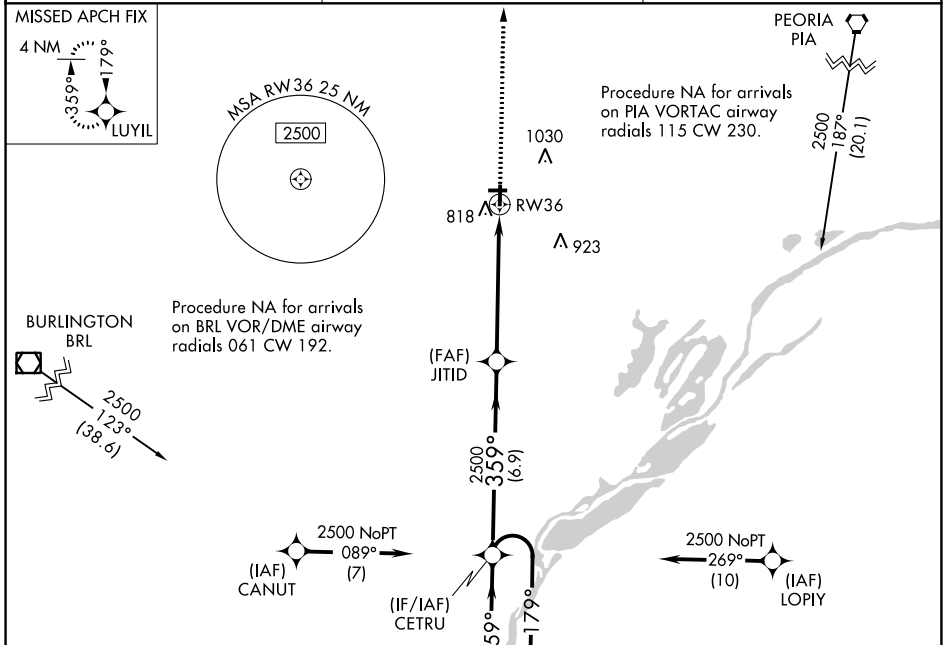
# RNAV (GPS) RWY 36

INGERSOLL (CTK)

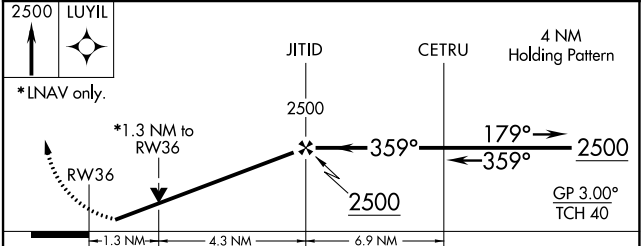
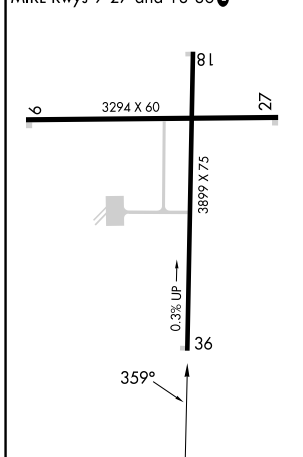
**Baro VNAV NA.** For uncompensated Baro-VNAV systems, LNAV/VNAV NA below -16°C (4°F) or above 54°C (130°F). DME/DME RNP-0.3 NA. VDP NA when using General Downing-Peoria Intl altimeter setting.

**MISSED APPROACH:** Climb to 2500 direct LUYIL and hold.

PIA ASOS <b>126.1 282.2</b>	SAINT LOUIS APP CON <b>125.8 269.2</b>	UNICOM <b>122.8 (CTAF) 0</b>
--------------------------------	---	---------------------------------



ELEV <b>684</b>	TDZE <b>680</b>
REIL Rwy 36	MIRL Rwy 9-27 and 18-36



CATEGORY	A	B	C	D
LPV DA	976-1	296 (300-1)		NA
LNAV/VNAV DA	1044-1	364 (400-1)		NA
LNAV MDA	1180-1	500 (500-1)	1180-1 <sup>3</sup> / <sub>8</sub> 500 (500-1 <sup>3</sup> / <sub>8</sub> )	NA
CIRCLING	1200-1 516 (600-1)	1440-1 756 (800-1)	1440-2 <sup>1</sup> / <sub>4</sub> 756 (800-2 <sup>1</sup> / <sub>4</sub> )	NA

EC-3, 26 DEC 2024 to 23 JAN 2025

EC-3, 26 DEC 2024 to 23 JAN 2025