

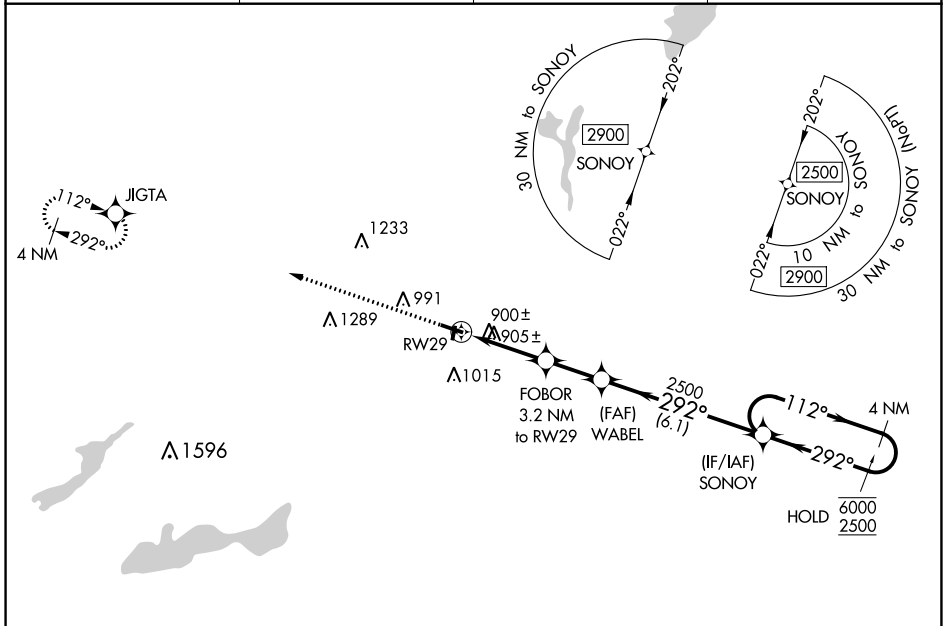
WAAS CH <b>82732</b> <b>W29A</b>	APP CRS <b>292°</b>	Rwy Idg TDZE Apt Elev	<b>4300</b> <b>780</b> <b>780</b>
--	------------------------	-----------------------------	---

# RNAV (GPS) RWY 29

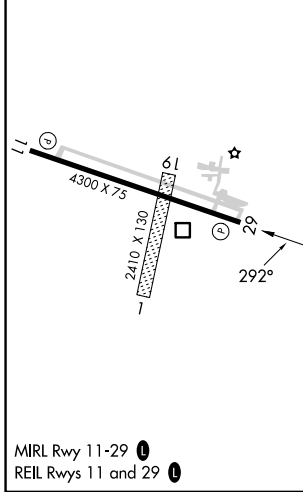
BURLINGTON MUNI (BUU)

RNP APCH - GPS.		MISSED APPROACH: Climb to 2600 direct JIGTA and hold.
<p><b>▼</b> Circling NA to Rwys 1 and 19.  <b>▲</b> Rwy 29 helicopter visibility reduction below 3/4 SM NA.</p>		

AWOS-3 <b>125.275</b>	MILWAUKEE APP CON <b>135.875 307.0</b>	GCO <b>121.725</b>	UNICOM <b>123.05</b> (CTAF) <b>📞</b>
--------------------------	---	-----------------------	---



ELEV	780	TDZE	780
------	-----	------	-----



2600	JIGTA	Visual Segment - Obstacles.			
		WABEL	SONOY	4 NM Holding Pattern	
		FOBOR 3.2 NM to RWY 29	2500	112°	6000
		1820	292°	292°	2500
		1 NM to RWY 29			
		1 NM	2.2 NM	2.1 NM	6.1 NM
CATEGORY	A	B	C	D	
LP MDA	1160-1 380 (400-1)				
LNAV MDA	1280-1	500 (500-1)	1280-1 3/8	500 (500-1 3/8)	
<b>📍</b> CIRCLING	1300-1 520 (600-1)	1380-1 600 (600-1)	1380-1 1/2 600 (600-1 1/2)	1560-2 1/2 780 (800-2 1/2)	

EC-3, 26 DEC 2024 to 23 JAN 2025

EC-3, 26 DEC 2024 to 23 JAN 2025