

WAAS CH <b>58037</b> <b>W32A</b>	APP CRS <b>319°</b>	Rwy ldg TDZE <b>30</b> Apt Elev <b>32</b>	<b>5004</b>
--	------------------------	---	-------------

# RNAV (GPS) RWY 32

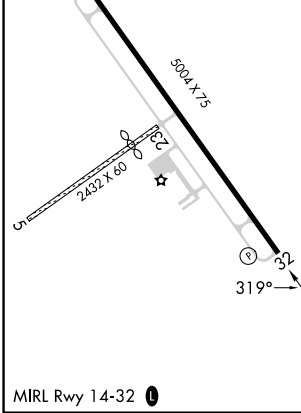
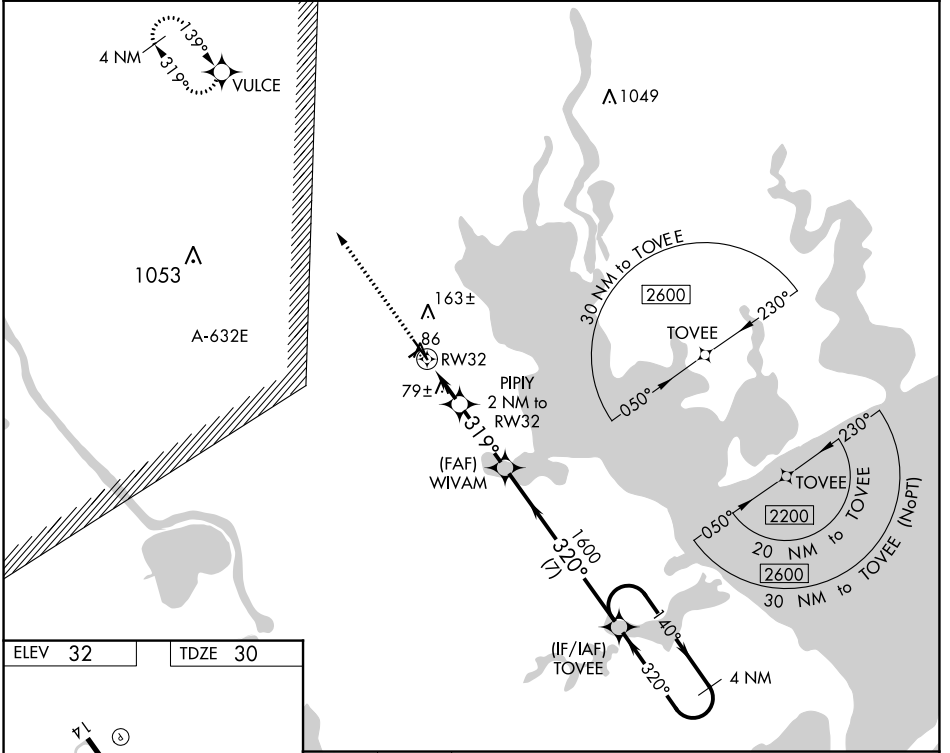
CALHOUN COUNTY (PKV)

RNP APCH - GPS.

▼ When local altimeter setting not received, use Victoria altimeter setting and increase all MDAs 60 feet and LNAV visibility Cat C ¼ SM and LP visibility Cat C ½ SM. Rwy 32 helicopter visibility reduction below 1 SM NA. Straight-In Rwy 32 NA at night, Circling Rwy 32 NA at night.

MISSED APPROACH: Climb to 2200 direct VULCE and hold.

AWOS-3 <b>118.275</b>	HOUSTON CENTER <b>135.05 353.6</b>	UNICOM <b>122.8 (CTAF) 0</b>
--------------------------	---------------------------------------	---------------------------------



2200	VULCE	TOVEE	4 NM Holding Pattern
↑	✧	→	
PIPIY 2 NM to RWY 32	WIVAM	TOVEE	
≤ 3.00° TCH 45	1600	140°	2200
RWY 32	700	← 320°	
→ 2 NM	→ 2.8 NM	→ 7 NM	
CATEGORY	A	B	C
LP MDA	340-1	310 (400-1)	340-7/8 310 (400-7/8)
LNAV MDA	400-1 370 (400-1)		NA
<input checked="" type="checkbox"/> CIRCLING	520-1	488 (500-1)	560-1½ 528 (600-1½)
D			NA

SC-5, 26 DEC 2024 to 23 JAN 2025

SC-5, 26 DEC 2024 to 23 JAN 2025