

APP CRS	Rwy Idg	4002
240°	TDZE	632
	Apt Elev	632

RNAV (GPS) RWY 24

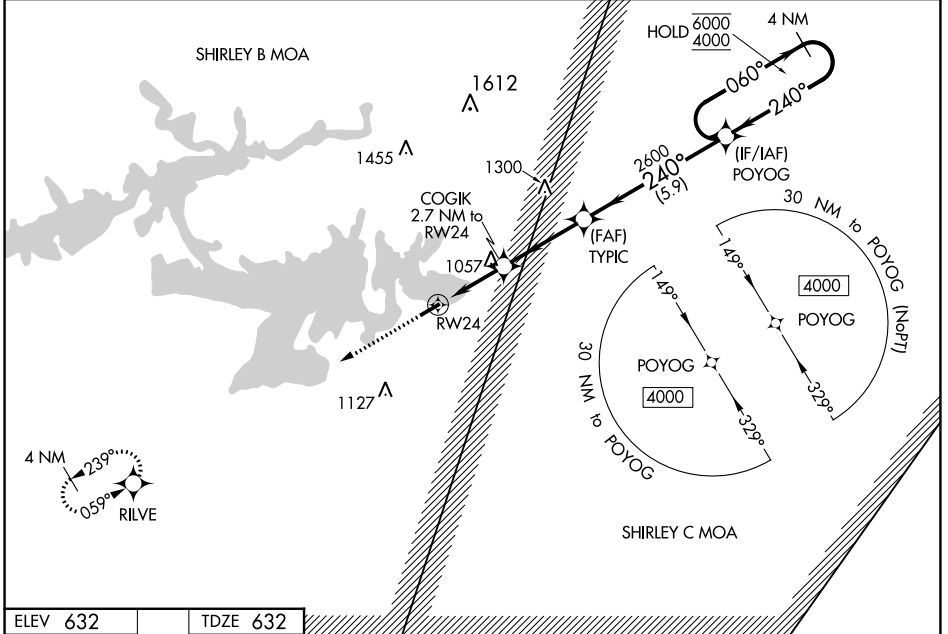
HEBER SPRINGS MUNI (HBZ)

RNP APCH.

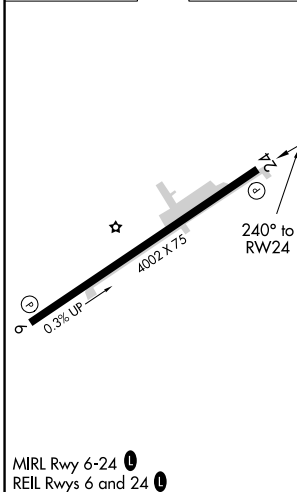
Procedure NA at night. Rwy 24 helicopter visibility reduction below 1 SM NA. Obtain local altimeter setting on CTAF; when not received, use Batesville altimeter setting and increase all MDAs 80 feet, and increase LNAV visibility Cat B ¼ SM, Cat C and D ½ SM. Increase Circling visibility Cat B, C ¼ SM, and Cat D ½ SM.

MISSED APPROACH: Climb to 4000 direct RILVE and hold, continue climb-in-hold to 4000.

MEMPHIS CENTER 126.85 281.55	UNICOM 122.7 (CTAF)
--	-------------------------------



ELEV 632	TDZE 632
----------	----------



RILVE 4000	TYPIC COGIK 2.7 NM to RWY 24	POYOG 4 NM Holding Pattern	060° → 6000 ← 240° 4000	
			3.00° TCH 39 2600	
RWY 24 1540		2.7 NM 3.4 NM 5.9 NM		
CATEGORY	A	B	C	D
LNAV MDA	1320-1	688 (700-1)	1320-2	688 (700-2)
CIRCLING	1320-1 688 (700-1)	1380-1 748 (800-1)	1380-2¼ 748 (800-2¼)	1440-2½ 808 (900-2½)

SC-1, 26 DEC 2024 to 23 JAN 2025

SC-1, 26 DEC 2024 to 23 JAN 2025