

WAAS CH <b>97708</b> <b>W09A</b>	APP CRS <b>090°</b>	Rwy Idg <b>4549</b> TDZE <b>669</b> Apt Elev <b>669</b>
--	------------------------	---

# RNAV (GPS) RWY 9

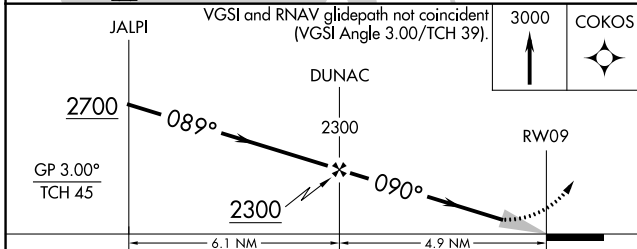
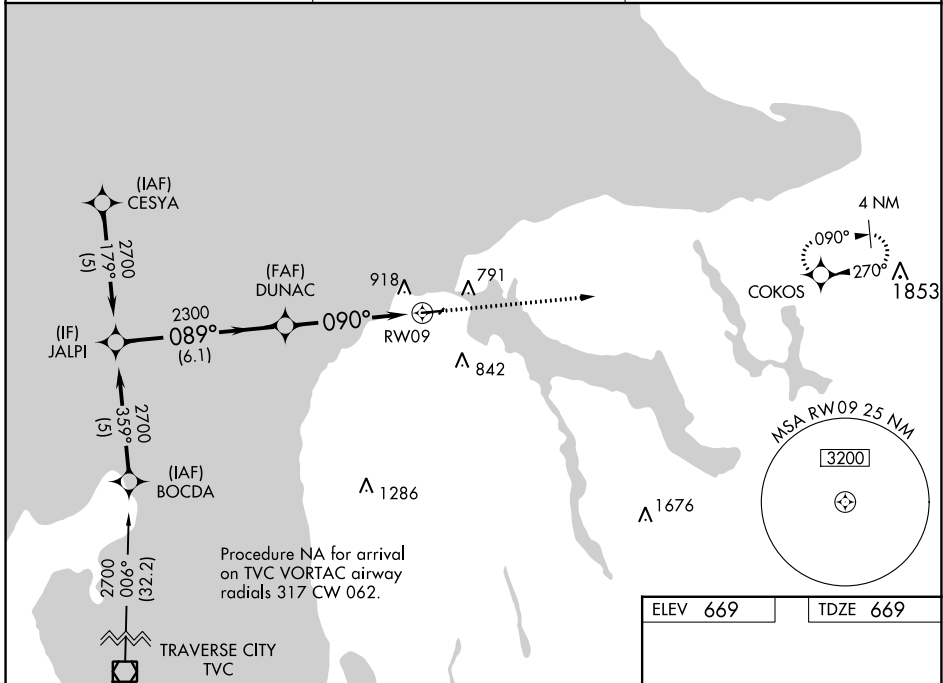
CHARLEVOIX MUNI (CVX)

RNP APCH - GPS.

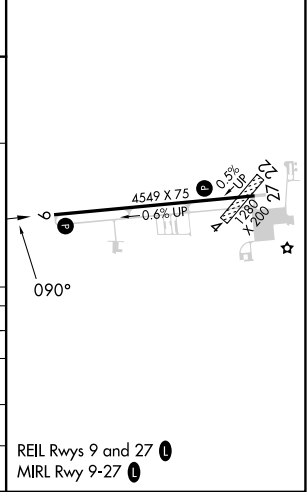
**⚠** Circling NA to Rwy 4 and 22. Baro-VNAV NA when using Pellston altimeter setting.  
**⚠** For uncompensated Baro-VNAV systems, LNAV/VNAV NA below -16°C or above 54°C.  
 When local altimeter setting not received, use Pellston altimeter setting; increase LPV DA to 986 feet and all visibilities ¼ SM; increase LNAV/VNAV DA to 1270 feet and all visibilities ¼ SM; increase all MDA 80 feet and visibility Cats C and D ¼ SM.

MISSED APPROACH:  
Climb to 3000 direct COKOS and hold.

AWOS-3P <b>120.0</b>	MINNEAPOLIS CENTER <b>134.6 354.05</b>	UNICOM <b>122.8 (CTAF)</b>
-------------------------	---	-------------------------------



ELEV 669	TDZE 669
----------	----------



CATEGORY	A	B	C	D
LPV DA	919-¾ 250 (300-¾)			
LNAV/VNAV DA	1203-1½ 534 (600-1½)			
LNAV MDA	1160-1 491 (500-1)		1160-1⅓ 491 (500-1⅓)	
CIRCLING	1280-1 611 (700-1)		1280-1¾ 691 (700-1¾)	

REIL Rwy 9 and 27 **Ⓛ**  
MIRL Rwy 9-27 **Ⓛ**

EC-1, 26 DEC 2024 to 23 JAN 2025

EC-1, 26 DEC 2024 to 23 JAN 2025