

| | | |
|--|------------------------|---|
| WAAS CH 62805 W35A | APP CRS 350° | Rwy Idg 5000 TDZE 756 Apt Elev 763 |
|--|------------------------|---|

RNAV (GPS) RWY 35

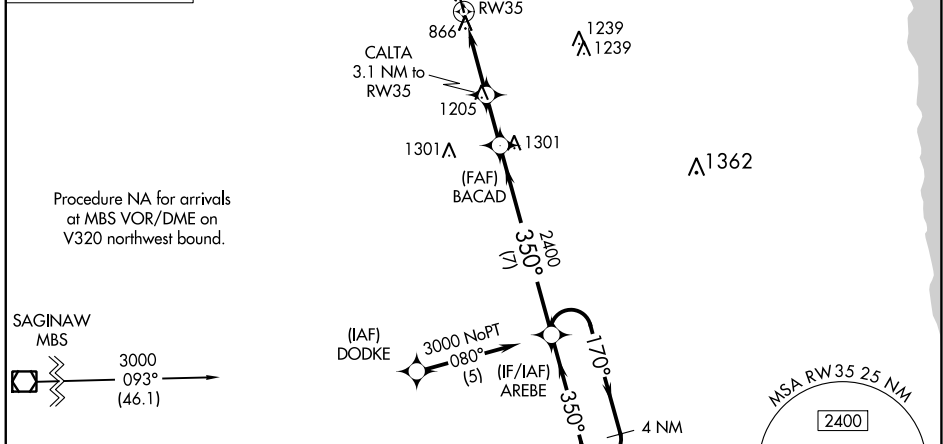
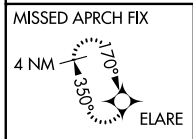
HURON COUNTY MEML (BAX)

RNP APCH.

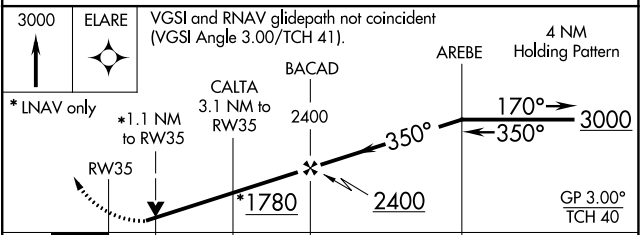
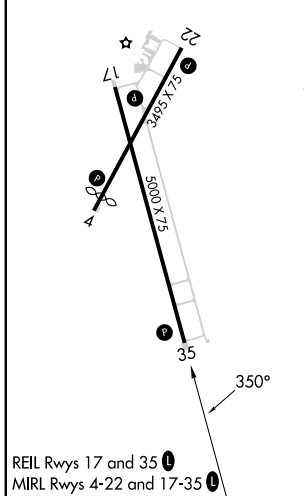
⚠ For uncompensated Baro-VNAV systems, LNAV/VNAV NA below -16°C or above 54°C. When local altimeter setting not received, use MBS Intl altimeter setting and increase all DA 129 feet and all MDA 140 feet; increase LPV all Cats and LNAV Cat C visibility 3/8 mile. Rwy 35 helicopter visibility reduction below 3/4 SM NA. VDP and Baro/VNAV NA when using MBS Intl altimeter setting.

MISSED APPROACH: Climb to 3000 direct ELARE and hold.

| | | |
|------------------------|--|-----------------------------------|
| AWOS-3 118.6 | CLEVELAND CENTER 127.7 290.425 | UNICOM 123.075 (CTAF) 0 |
|------------------------|--|-----------------------------------|



| | |
|----------|----------|
| ELEV 763 | TDZE 756 |
|----------|----------|



| CATEGORY | A | B | C | D |
|--------------|-----------------------|-------------------------|-------------------------|----|
| LPV DA | 1113-1¼ | 357 (400-1¼) | | NA |
| LNAV/VNAV DA | 1154-1½ | 398 (400-1½) | | NA |
| LNAV MDA | 1520-1 764 (800-1) | 1520-1¼ 764 (800-1¼) | 1520-2½ 764 (800-2½) | NA |

EC-1, 26 DEC 2024 to 23 JAN 2025

EC-1, 26 DEC 2024 to 23 JAN 2025