

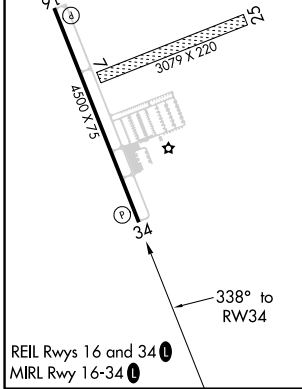
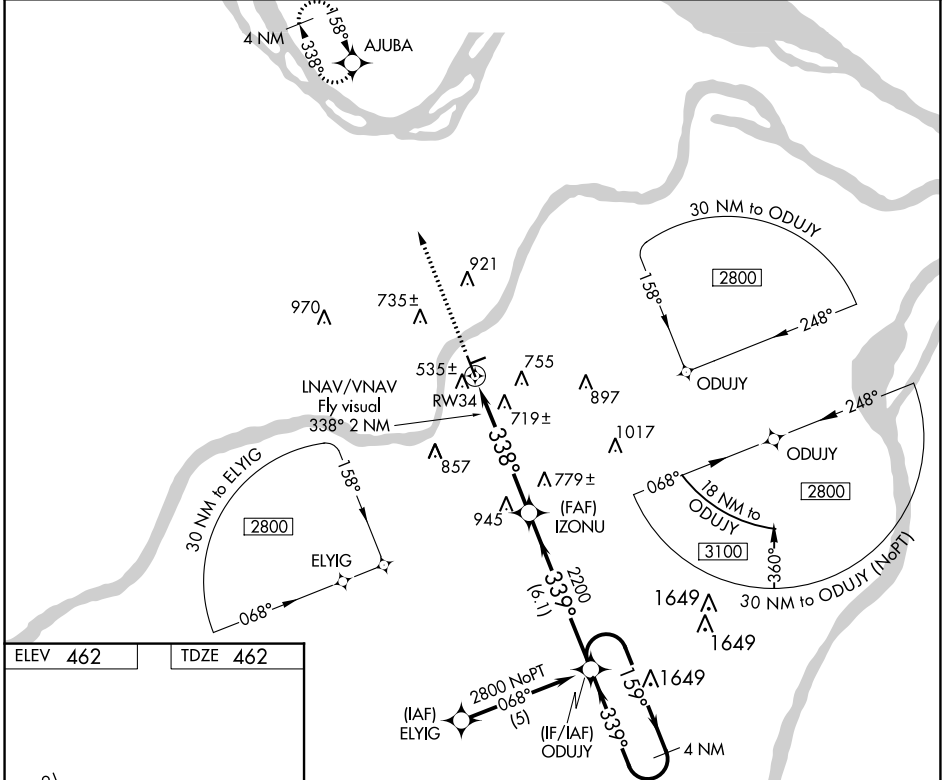
WAAS CH <b>93905</b> <b>W34A</b>	APP CRS <b>338°</b>	Rwy Idg <b>4500</b> TDZE <b>462</b> Apt Elev <b>462</b>
--	------------------------	---

# RNAV (GPS) RWY 34

CREVE COEUR (1H0)

RNP APCH.	Use St Louis Lambert Intl altimeter setting. Baro-VNAV NA. Circling Rwy 16 NA at night. ▲NA Circling NA to Rws 7 and 25. Rwy 34 helicopter visibility reduction below ¾ SM NA.	MISSED APPROACH: Climb to 2700 direct AJUBA and hold.
-----------	---	--

ST. LOUIS APP CON <b>126.5 254.3</b>	UNICOM <b>122.8 (CTAF)</b>
---	-------------------------------



2700	AJUBA	VGSI and RNAV glidepath not coincident. (VGSI Angle 3.00/TCH 43).	4 NM Holding Pattern
	IZONU		ODUJY
	RW34		2800
	LNNAV/VNAV Fly visual 338° 2 NM		GP 3.00° TCH 30
	5.3 NM	6.1 NM	

CATEGORY	A	B	C	D
LPV DA	809-1¼ 347 (400-1¼)			NA
LNNAV/VNAV DA	1131-2 669 (700-2)			NA
LNNAV MDA	1080-1 618 (700-1)			NA
CIRCLING	1080-1 618 (700-1)	1120-1 658 (700-1)		NA

NC-3, 26 DEC 2024 to 23 JAN 2025

NC-3, 26 DEC 2024 to 23 JAN 2025