

WAAS CH <b>60940</b> <b>W14A</b>	APP CRS <b>135°</b>	Rwy Idg <b>4000</b> TDZE <b>1392</b> Apt Elev <b>1402</b>
--	------------------------	---

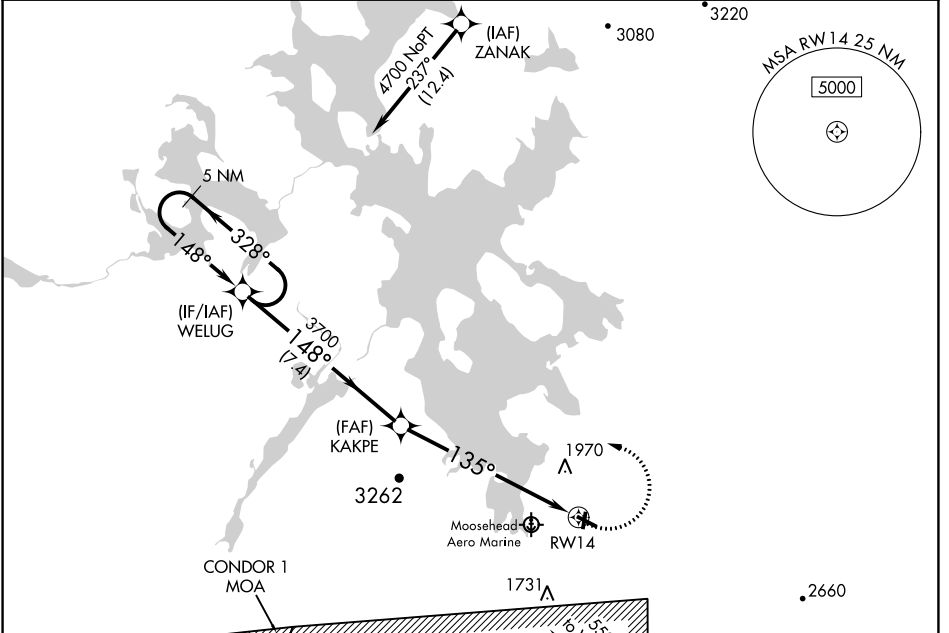
# RNAV (GPS) RWY 14

GREENVILLE MUNI (3B1)

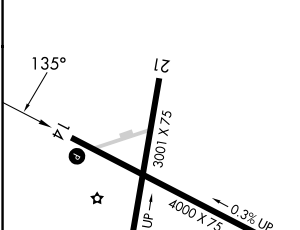
**⚠** For uncompensated Baro-VNAV systems, LNAV/VNAV NA below -17°C (2°F) or above 54°C (130°F). DME/DME RNP-0.3 NA. Night landing: Rwy 3, 21, 32 NA.  
**⚠** -18°C \*\* Missed approach requires minimum climb of 215 feet per NM to 4200.

**MISSED APPROACH:** Climb to 2800 then climbing left turn to 5000 direct WELUG and hold.

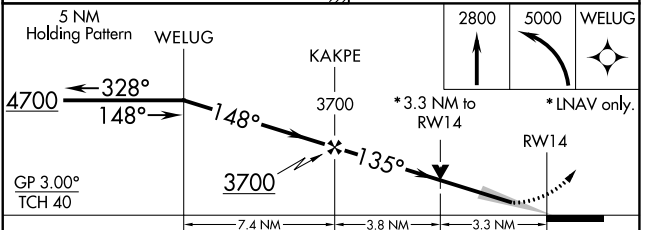
AWOS-A <b>124.175</b>	BOSTON CENTER <b>120.25 346.4</b>	CLNC DEL <b>122.3</b>	UNICOM <b>122.8 (CTAF)</b> <b>Ⓛ</b>
--------------------------	--------------------------------------	--------------------------	--



ELEV <b>1402</b>	TDZE <b>1392</b>
------------------	------------------



CONDOR 2 MOA  
 Procedure NA for arrival on BGR VORTAC airway radials 251 CW 038.



CATEGORY	A	B	C	D
LPV DA		**1667-1	275 (300-1)	
LPV DA		2205-3	813 (900-3)	
LNAV/VNAV DA		2310-4	918 (1000-4)	
LNAV MDA	2500-1¼ 1108 (1100-¼)	2500-1½ 1108 (1100-½)	2500-3	1108 (1100-3)
<b>C</b> CIRCLING	2500-1¼ 1098 (1100-¼)	2500-1½ 1098 (1100-½)	2500-3 1098 (1100-3)	2660-3 1258 (1300-3)

REIL Rwy 14 **Ⓛ**  
 MIRL Rwy 14-32 **Ⓛ**

NE-1, 26 DEC 2024 to 23 JAN 2025

NE-1, 26 DEC 2024 to 23 JAN 2025