

WAAS CH 53416 W12A	APP CRS 121°	Rwy Idg 5001	TDZE 91
		Apt Elev 99	

RNAV (GPS) RWY 12

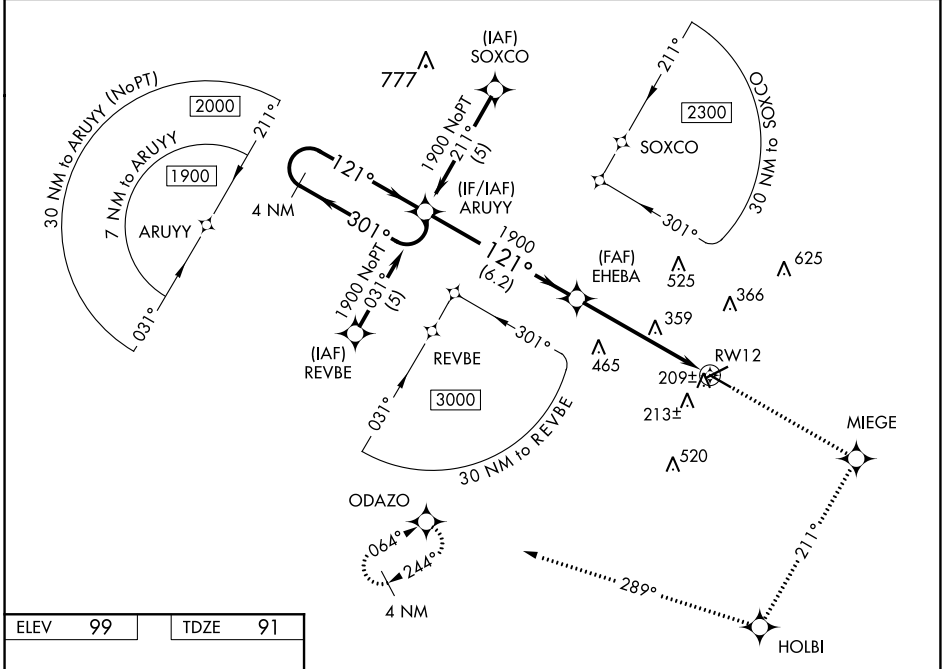
BREWTON MUNI (12J)

RNP APCH.

NA Baro-VNAV NA when using Pensacola altimeter setting. For uncompensated Baro-VNAV systems, LNAV/VNAV NA below -15°C or above 48°C. When local altimeter setting not received, use Pensacola altimeter setting; increase LPV DA to 425 feet; increase LNAV/VNAV DA to 563 feet; increase all MDAs 100 feet and LPV visibility all Cats, LNAV/VNAV visibility all Cats and LNAV Cats C and D ½ SM. VDP NA when using Pensacola altimeter setting.

MISSED APPROACH: Climb to 2000 direct MIEGE and right turn on track 211° to HOLBI and on track 289° to ODAZO and hold.

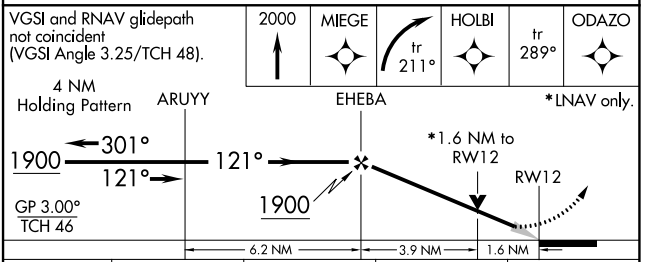
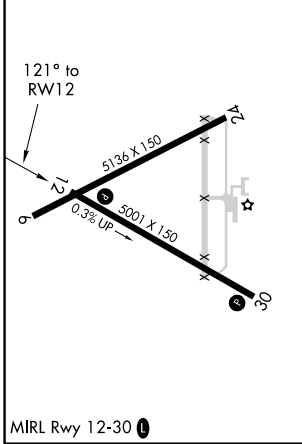
AWOS-3PT 119.325	PENSACOLA APP CON 127.35 291.625	UNICOM 122.725 (CTAF)
----------------------------	--	---------------------------------



SE-4, 26 DEC 2024 to 23 JAN 2025

SE-4, 26 DEC 2024 to 23 JAN 2025

ELEV 99	TDZE 91
---------	---------



CATEGORY	A	B	C	D
LPV DA	341-1 250 (300-1)			
LNAV/VNAV DA	479-1½ 388 (400-1½)			
LNAV MDA	640-1 549 (600-1)		640-1½ 549 (600-1½)	