

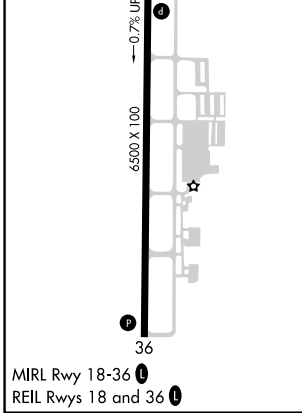
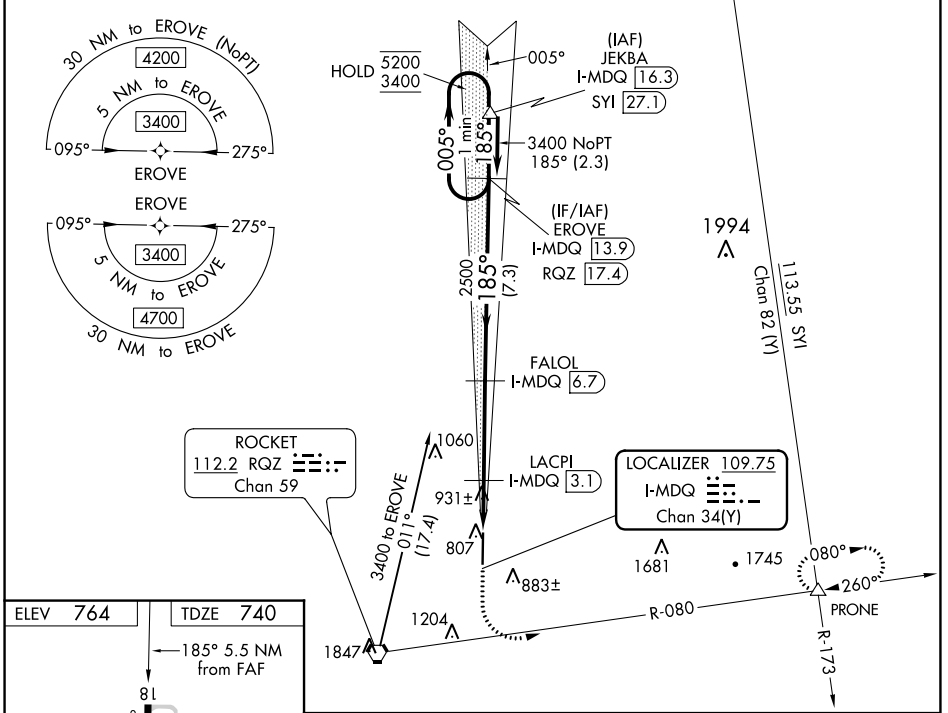
LOC/DME I-MDQ <b>109.75</b> Chan 34(Y)	APP CRS <b>185°</b>	Rwy Idg TDZE Apt Elev	<b>6500</b> <b>740</b> <b>764</b>
----------------------------------------------	------------------------	-----------------------------	-----------------------------------------

# ILS or LOC RWY 18

HUNTSVILLE EXEC TOM SHARP JR FLD (MDQ)

DME or RNAV 1- GPS required.		MISSED APPROACH: Climb to 1200 then climbing left turn to 4000 on heading 120° and on RQZ VORTAC R-080 to PRONE INT and hold, continue climb-in-hold to 4000.	
▼ ▲ Rwy 18 helicopter visibility reduction below ¾ SM NA.			

AWOS-3PT <b>120.0</b>	HUNTSVILLE APP CON * <b>125.6 354.1</b>	GCO <b>121.725</b>	UNICOM <b>123.0 (CTAF) 0</b>
--------------------------	--------------------------------------------	-----------------------	---------------------------------



1200	4000	RQZ R-080	PRONE	EROVE I-MDQ 13.9	One Minute Holding Pattern
↑	hdg 120°		△		
*LOC only.		*I-MDQ 2.6	LACPI I-MDQ 3.1	2500	005° → 5200
		I-MDQ 1.2		1360*	← 185° 3400
		1.4	0.5 NM	3.6 NM	2500
				7.3 NM	GS 3.00° TCH 43
CATEGORY	A	B	C	D	
S-ILS 18	940-¾		200 (200-¾)		
S-LOC 18	1200-1		460 (500-1)		
☐ CIRCLING	1260-1	496 (500-1)	1560-2¼ 796 (800-2¼)	2000-3 1236 (1300-3)	

SE-4, 26 DEC 2024 to 23 JAN 2025

SE-4, 26 DEC 2024 to 23 JAN 2025