

WAAS CH 99604 W23A	APP CRS 230°	Rwy ldg 6114 TDZE 1032 Apt Elev 1032
--	------------------------	---

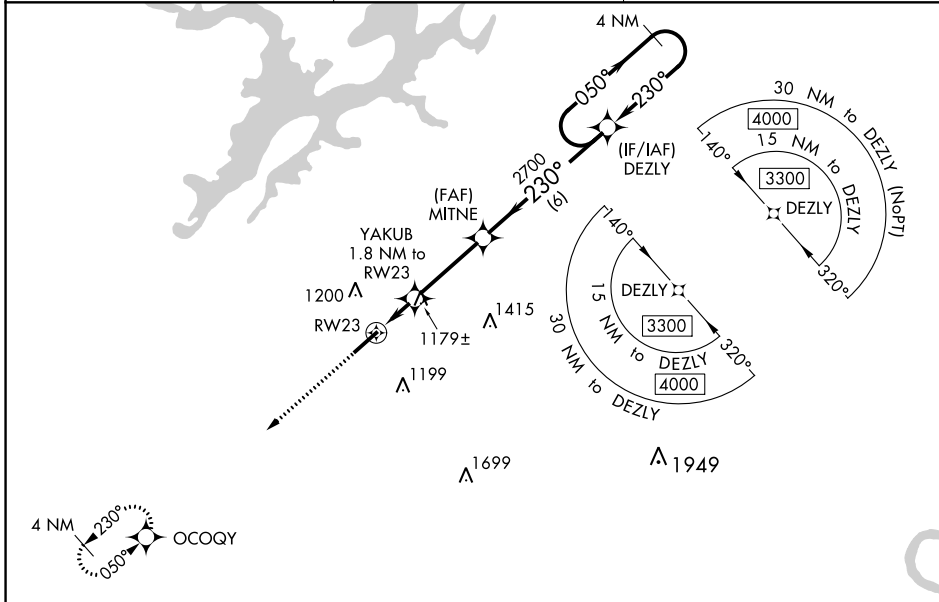
RNAV (GPS) RWY 23

ALBARTVILLE RGNL/THOMAS J BRUMLIK FLD (8A0)

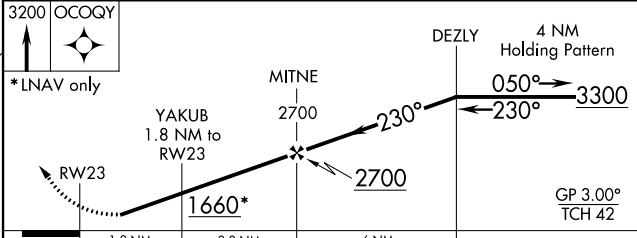
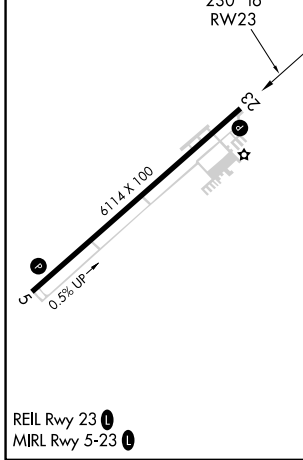
⚠ DME/DME RNP-0.3 NA. When local altimeter setting not received, use Huntsville Intl-Carl T Jones Fld altimeter setting and increase all DA 139 feet and all MDA 140 feet; increase LPV all Cats visibility $\frac{3}{8}$ mile. Increase LNAV/VNAV all Cats and LNAV Cats C and D visibility $\frac{1}{2}$ mile. Increase Circling Cat C visibility $\frac{1}{4}$ mile and Cat D $\frac{1}{2}$ mile. For uncompensated Baro-VNAV systems, LNAV/VNAV NA below -17°C (2°F) or above 54°C (130°F). Baro-VNAV NA when using Huntsville Intl-Carl T Jones Fld altimeter setting. Helicopter visibility reduction below 1 SM NA.

MISSED APPROACH:
Climb to 3200 direct to OCOQY and hold.

AWOS-3PT 119.575	BIRMINGHAM APP CON 125.45 279.65	UNICOM 123.0 (CTAF) 0
----------------------------	--	---------------------------------



ELEV 1032	TDZE 1032
-----------	-----------



CATEGORY	A	B	C	D
LPV DA		1282-1	250 (300-1)	
LNAV/VNAV DA		1340-1	308 (400-1)	
LNAV MDA	1440-1	408 (500-1)	1440-1 $\frac{1}{8}$	408 (500-1 $\frac{1}{8}$)
C CIRCLING	1480-1 448 (500-1)	1500-1 468 (500-1)	1500-1 $\frac{1}{2}$ 468 (500-1 $\frac{1}{2}$)	1680-2 648 (700-2)

RNAV (GPS) RWY 23

SE-4, 26 DEC 2024 to 23 JAN 2025

SE-4, 26 DEC 2024 to 23 JAN 2025