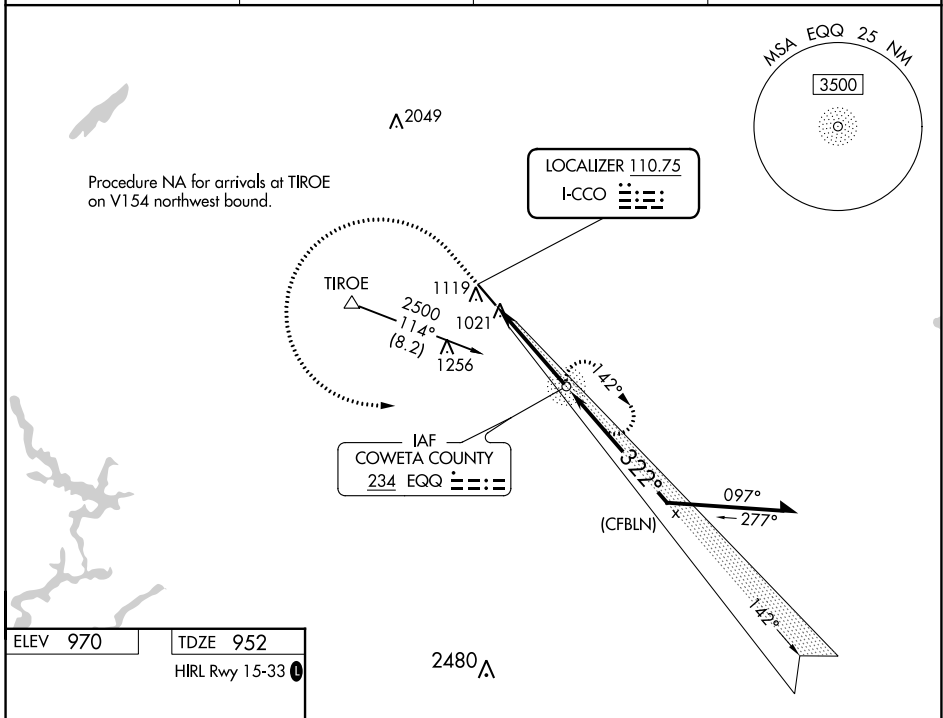


LOC I-CCO 110.75	APP CRS 322°	Rwy Idg TDZE Apt Elev	5500 952 970
----------------------------	------------------------	-----------------------------	---

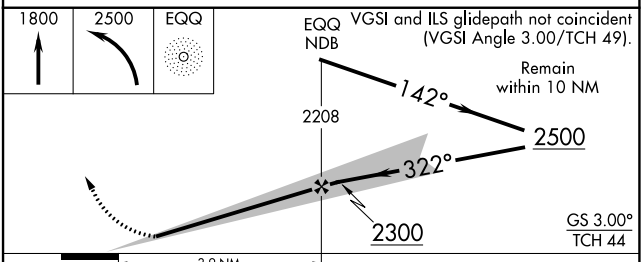
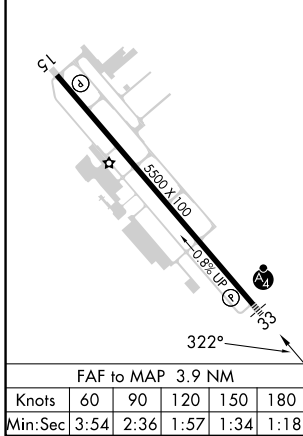
ILS or LOC RWY 33
NEWNAN COWETA COUNTY (CCO)

ADF required.	MALSF	MISSED APPROACH: Climb to 1800 then climbing left turn to 2500 direct EQQ NDB and hold, continue climb-in-hold to 2500.
Rwy 33 helicopter visibility reduction below 3/4 SM NA. Inop table does not apply to S-ILS 33.		

AWOS-3PT 118.975	ATLANTA APP CON 119.8 354.125	GCO 121.725	UNICOM 122.7 (CTAF)
----------------------------	---	-----------------------	-------------------------------



ELEV 970	TDZE 952
HIRL Rwy 15-33	



	3.9 NM			
CATEGORY	A	B	C	D
S-ILS 33	1 202-3/4 250 (300-3/4)			
S-LOC 33	1340-3/4	388 (400-3/4)	1340-7/8	388 (400-7/8)
CIRCLING	1420-1	450 (500-1)	1560-1 1/2	1560-2
			590 (600-1 1/2)	590 (600-2)

SE-4, 26 DEC 2024 to 23 JAN 2025

SE-4, 26 DEC 2024 to 23 JAN 2025