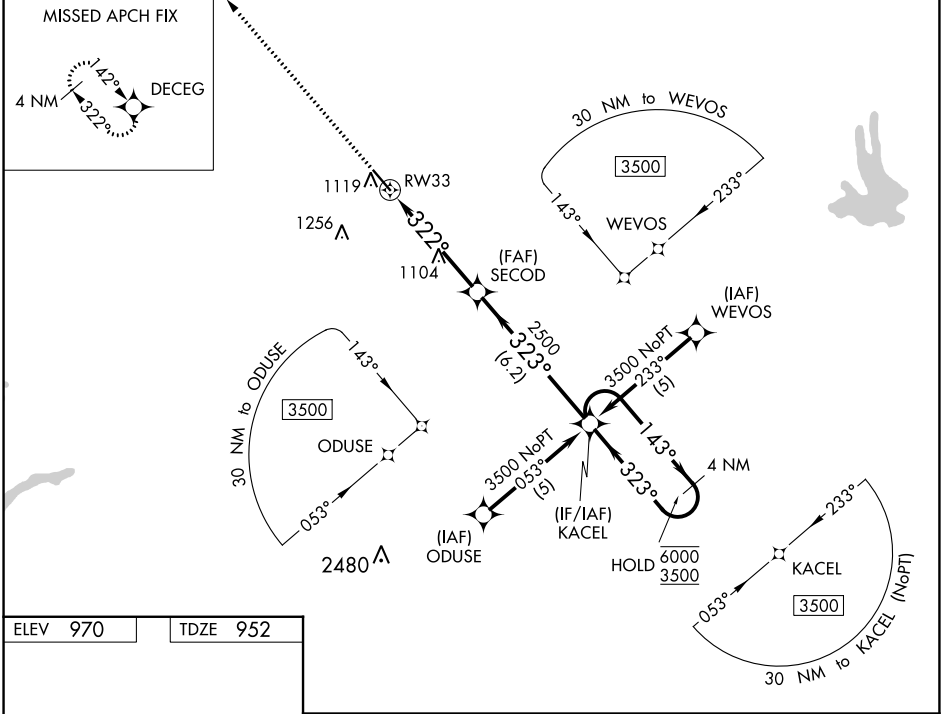


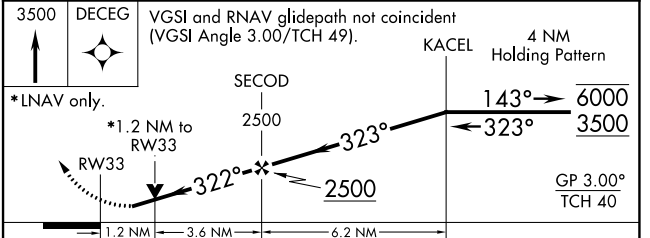
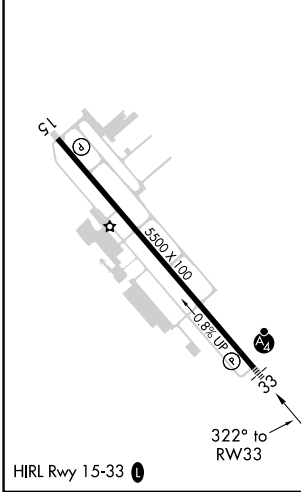
WAAS CH <b>77528</b> <b>W33A</b>	APP CRS <b>322°</b>	Rwy Idg TDZE Apt Elev	<b>5500</b> <b>952</b> <b>970</b>
--	------------------------	-----------------------------	---

**RNAV (GPS) RWY 33**  
NEWNAN COWETA COUNTY (CCO)

RNP APCH.		MALSF	
<p>Rwy 33 helicopter visibility reduction below 3/4 SM NA. For uncompensated Baro-VNAV systems, LNAV/VNAV NA below -16°C or above 46°C. For inop ALS, increase LPV and LNAV/VNAV all Cats and LNAV Cats C/D visibilities to 1 1/8 SM.</p>		<p>MISSED APPROACH: Climb to 3500 direct DECEG and hold.</p>	
AWOS-3PT <b>118.975</b>	ATLANTA APP CON <b>119.8 354.125</b>	GCO <b>121.725</b>	UNICOM <b>122.7 (CTAF) 0</b>



ELEV 970	TDZE 952
----------	----------



CATEGORY	A	B	C	D
LPV DA		1242-1	290 (300-1)	
LNAV/VNAV DA		1286-1	334 (400-1)	
LNAV MDA		1360-1	408 (400-1)	
<input checked="" type="checkbox"/> CIRCLING	1420-1	450 (500-1)	1560-1 1/2 590 (600-1 1/2)	1560-2 590 (600-2)

SE-4, 26 DEC 2024 to 23 JAN 2025

SE-4, 26 DEC 2024 to 23 JAN 2025