

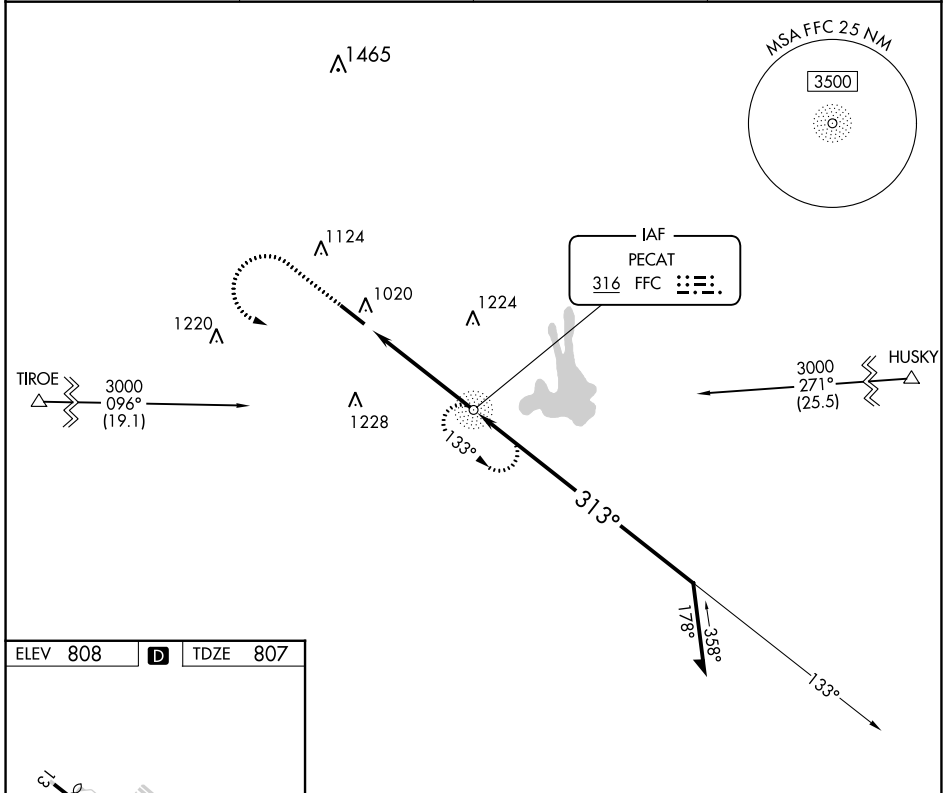
NDB FFC 316	APP CRS 313°	Rwy Idg TDZE Apt Elev	5118 807 808
-----------------------	------------------------	-----------------------------	-----------------------------------------

NDB RWY 31

ATLANTA RGNL FALCON FLD (F'F'C)

	Circling Rwy 13 NA at night. Rwy 31 helicopter visibility reduction below 3/4 SM NA. For Inop ALS, increase Cat C/D visibility to 1 1/2 SM.	ODALS 	MISSED APPROACH: Climb to 1700 then climbing left turn to 2500 direct FFC NDB and hold.
		MISSED APPROACH: Climb to 1700 then climbing left turn to 2500 direct FFC NDB and hold.	

ASOS 118.525	ATLANTA APP CON 119.8 354.125	CLNC DEL 119.8	UNICOM 123.05 (CTAF)
------------------------	-----------------------------------------	--------------------------	--------------------------------



ELEV 808	D	TDZE 807
----------	----------	----------

REIL Rwy 13
MRL Rwy 13-31

FAF to MAP 5.1 NM

Knots	60	90	120	150	180
Min:Sec	5:06	3:24	2:33	2:02	1:42

1700 	2500 	FFC 	FFC NDB 	Remain within 10 NM
1700 → 2500 (3.07° TCH 45)		2500 → 313° → 2500	2500 → 133° → 2500	5.1 NM
CATEGORY	A	B	C	D
S-31	1360-3/4 553 (600-3/4)		1360-1 3/8 553 (600-1 3/8)	
CIRCLING	1360-1 552 (600-1)		1440-1 3/4 632 (700-1 3/4)	1540-2 1/4 732 (800-2 1/4)

SE-4, 26 DEC 2024 to 23 JAN 2025

SE-4, 26 DEC 2024 to 23 JAN 2025