

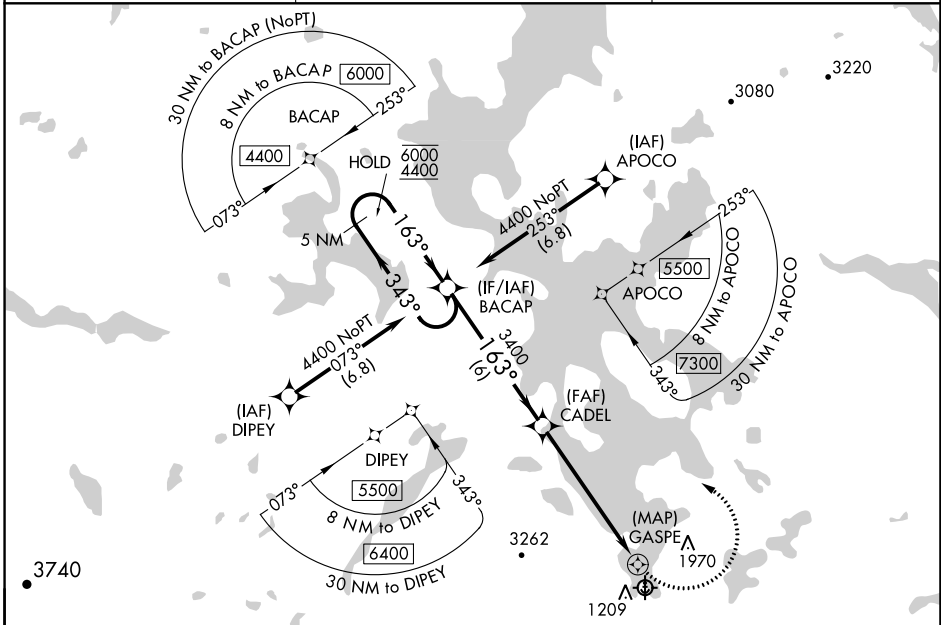
APP CRS	Rwy Idg	N/A
163°	TDZE	N/A
	Apt Elev	1028

# RNAV (GPS)-B

MOOSEHEAD AERO MARINE (52B)

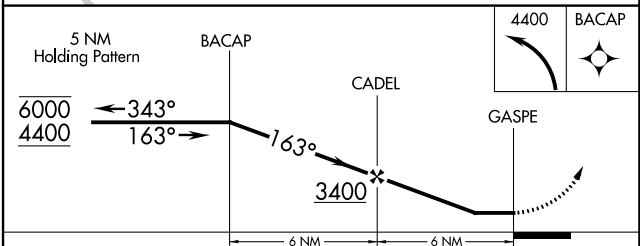
RNP APCH - GPS.		MISSED APPROACH: Climbing left turn to 4400 direct BACAP and hold.
<p>Procedure NA at night. Use 3B1 altimeter setting; when not received, use BGR altimeter setting and increase all MDA 240 feet.</p> <p>NA</p> <p>-22°C</p>		

3B1 AWOS-A <b>124.175</b>	BOSTON CENTER <b>120.25 346.4</b>	CTAF <b>122.9</b>
------------------------------	--------------------------------------	----------------------



ELEV 1028

SEE MOOSEHEAD AERO MARINE SEAPLANE BASE LANDING CHART



CATEGORY	A	B	C	D
CIRCLING	2140-1¼ 1112 (1200-1¼)	2560-1½ 1532 (1600-1½)	2560-3 1532 (1600-3)	NA

NE-1, 26 DEC 2024 to 23 JAN 2025

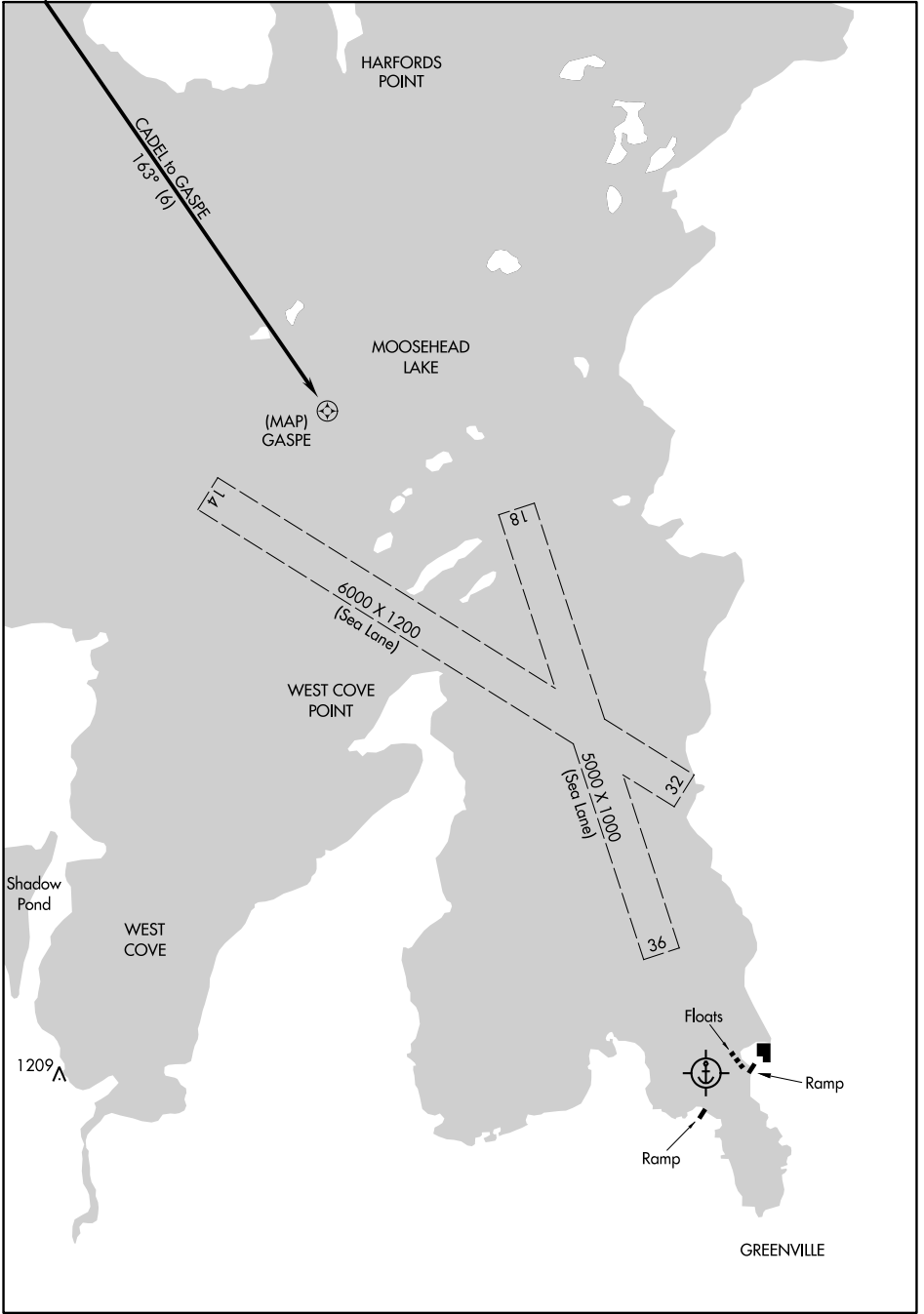
NE-1, 26 DEC 2024 to 23 JAN 2025

24249

# RNAV (GPS) -B LANDING

AL-5935 (FAA)

MOOSEHEAD AERO MARINE (52B)  
GREENVILLE, MAINE



NE-1, 26 DEC 2024 to 23 JAN 2025

NE-1, 26 DEC 2024 to 23 JAN 2025

# RNAV (GPS) -B LANDING

45°28'N-69°36'W

GREENVILLE, MAINE  
MOOSEHEAD AERO MARINE (52B)

Amdt 1A 05SEP24