

DALLAS THREE DEPARTURE
(DAL3, TTT) 25JAN24

LANCASTER, TEXAS
LANCASTER RGNL (LNC)

LONE STAR DEP CON
125.2 343.65
CTAF
122.7

RADAR and DME required.

NOTE: BELCHER Transition: For aircraft inbound to the JAN, MLU, and SHV terminal areas only.
NOTE: SOLDO Transition: ATC assigned.

**TOP ALTITUDE:
ASSIGNED BY ATC**

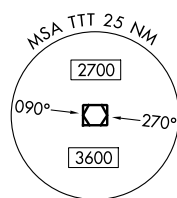
BONHAM
114.6 BYP
Chan 93

MAVERICK
113.1 TTT
Chan 78

GREGG COUNTY
112.9 GGG
Chan 76

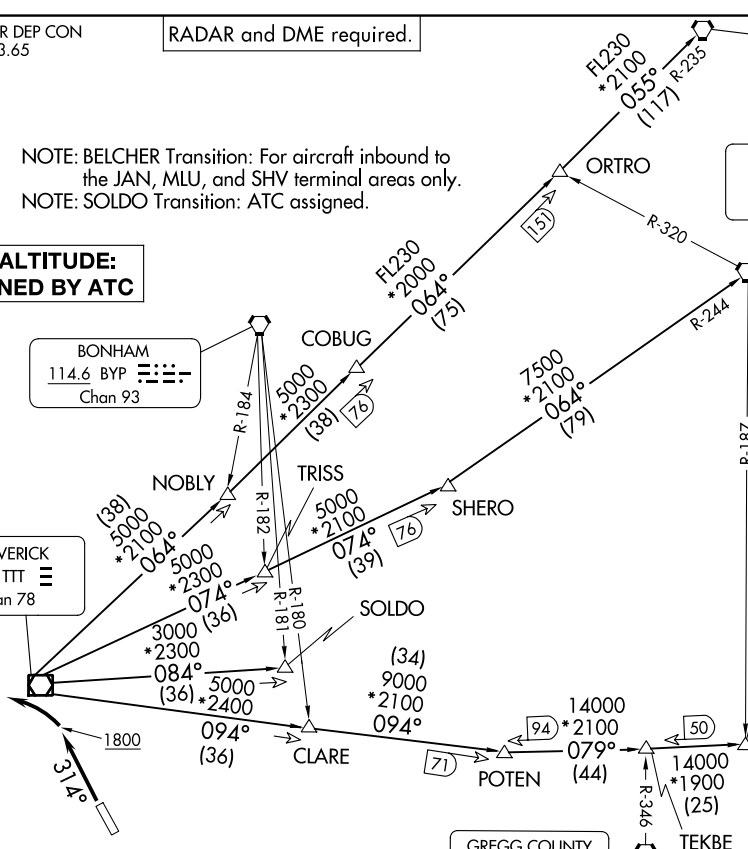
TEXARKANA
116.3 TXK
Chan 110

LITTLE ROCK
113.9 LIT
Chan 86



TAKEOFF MINIMUMS

Rwy 13: Standard.
Rwy 31: 300-1¼ or standard with a minimum climb of 210'/NM to 800, or alternatively, with standard takeoff minimums and a normal 200'/NM climb gradient, takeoff must occur no later than 1300' prior to DER.



(CONTINUED ON FOLLOWING PAGE)

NOTE: Chart not to scale.

(DAL3, TTT) 24305
DALLAS THREE DEPARTURE

AL-5936 (FAA)

LANCASTER RGNL (LNC)
LANCASTER, TEXAS

DALLAS THREE DEPARTURE

LANCASTER, TEXAS



DEPARTURE ROUTE DESCRIPTION

TAKEOFF RUNWAY 31: Climb on heading 314° to 1800 before turning left.

When entering controlled airspace, fly assigned heading for RADAR vectors to appropriate route. Maintain ATC assigned altitude.

BELCHER TRANSITION (DALL3.EIC): From over TTT VOR/DME on TTT R-094 to POTEN, then on EIC R-259 to EIC VORTAC.

LITTLE ROCK TRANSITION (DALL3.LIT): From over TTT VOR/DME on TTT R-064 to ORTRO, then on LIT R-235 to LIT VORTAC.

SOLDO TRANSITION (DALL3.SOLDO): From over TTT VOR/DME on TTT R-084 to SOLDO.

TEXARKANA TRANSITION (DALL3.TXK): From over TTT VOR/DME on TTT R-074 to SHERO, then on TXK R-244 to TXK VORTAC.

SC-2, 26 DEC 2024 to 23 JAN 2025

SC-2, 26 DEC 2024 to 23 JAN 2025