

WAAS CH <b>42505</b> <b>W31A</b>	APP CRS <b>314°</b>	Rwy Idg <b>6500</b> TDZE <b>487</b> Apt Elev <b>501</b>
--	------------------------	---

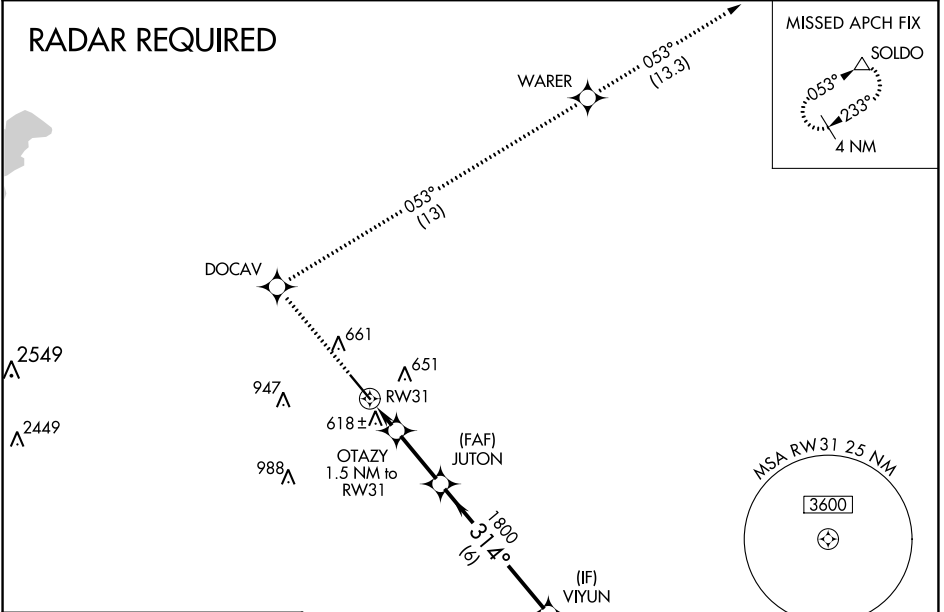
# RNAV (GPS) RWY 31

LANCASTER RGNL (LNC)

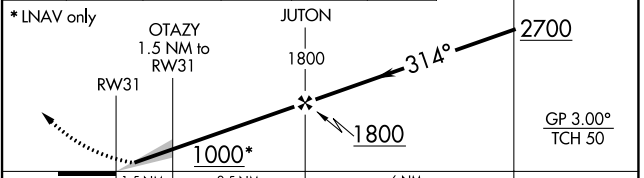
**⚠** For uncompensated Baro-VNAV systems, LNAV/VNAV NA below -16°C (4°F) or above 47°C (116°F). DME/DME RNP-0.3 NA. Baro-VNAV NA when using Dallas Exec altimeter setting. When local altimeter setting not received, use Dallas Exec altimeter setting and increase LPV DA to 732 feet; increase LNAV/VNAV DA to 970 feet and visibility all Cats ¼ SM; increase all MDAs 60 feet and LNAV Cats C/D and Circling Cats C/D visibility ¼ SM.

**MISSED APPROACH:** Climb to 2000 direct DOCAV and right turn on track 053° to WARER then climb to 3000 on track 053° to SOLDO and hold.

AWOS-3PT <b>118.975</b>	LONE STAR APP CON <b>125.2 343.65</b>	GCO <b>121.725</b>	UNICOM <b>122.7 (CTAF) 0</b>
----------------------------	--	-----------------------	---------------------------------



ELEV <b>501</b>	TDZE <b>487</b>
-----------------	-----------------



CATEGORY	A	B	C	D
LPV DA	687-¾ 200 (200-¾)			
LNAV/VNAV DA	925-1½ 438 (500-1½)			
LNAV MDA	880-1 393 (400-1)			880-1¼ 393 (400-1¼)
CIRCLING	980-1 479 (500-1)	1020-1 519 (600-1)	1300-2¼ 799 (800-2¼)	1300-2½ 799 (800-2½)

MIRL Rwy 13-31 0

SC-2, 26 DEC 2024 to 23 JAN 2025

SC-2, 26 DEC 2024 to 23 JAN 2025