

GABOW TWO DEPARTURE (RNAV)

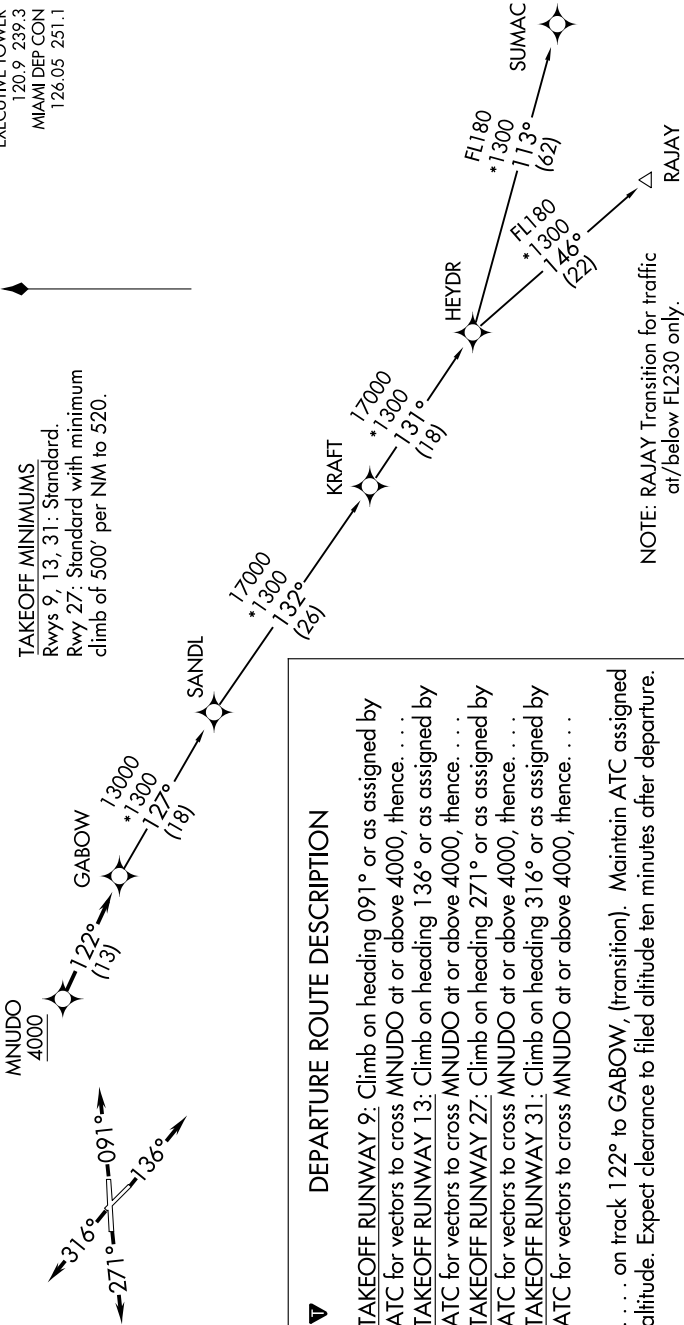
SE-3, 26 DEC 2024 to 23 JAN 2025

- ATIS 119.85
- CINCDEL 127.95
- GND CON 121.75
- EXECUTIVE TOWER 120.9 239.3
- MIAMI DEP CON 126.05 251.1



TAKEOFF MINIMUMS
Rwys 9, 13, 31: Standard.
Rwy 27: Standard with minimum
climb of 500' per NM to 520.

RNAV 1 - DME/DME/IRU or GPS.
From KRAFT - GPS.
RADAR required.



**TOP ALTITUDE:
ASSIGNED BY ATC**

▼ DEPARTURE ROUTE DESCRIPTION

TAKEOFF RUNWAY 9: Climb on heading 091° or as assigned by ATC for vectors to cross MNUDO at or above 4000, thence. . . .

TAKEOFF RUNWAY 13: Climb on heading 136° or as assigned by ATC for vectors to cross MNUDO at or above 4000, thence. . . .

TAKEOFF RUNWAY 27: Climb on heading 271° or as assigned by ATC for vectors to cross MNUDO at or above 4000, thence. . . .

TAKEOFF RUNWAY 31: Climb on heading 316° or as assigned by ATC for vectors to cross MNUDO at or above 4000, thence. . . .

. . . . on track 122° to GABOW, (transition). Maintain ATC assigned altitude. Expect clearance to filed altitude ten minutes after departure.

- RAJAY TRANSITION (GABOW2.RAJAY)
- SANDL TRANSITION (GABOW2.SANDL)
- SUMAC TRANSITION (GABOW2.SUMAC)

NOTE: RAJAY Transition for traffic at/below FL230 only.

NOTE: Chart not to scale.