

APP CRS	Rwy Idg	3907
359°	TDZE	512
	Apt Elev	516

RNAV (GPS) RWY 36

COMMERCE MUNI (2F7)

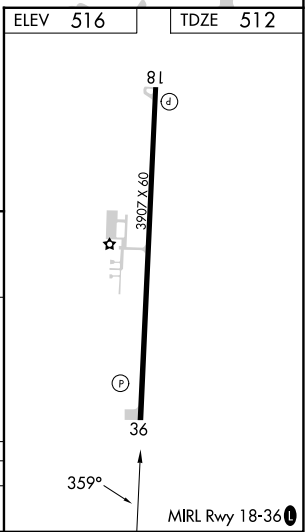
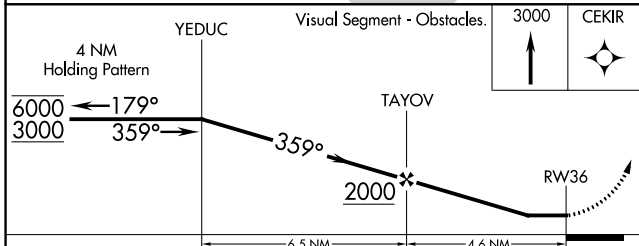
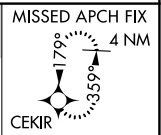
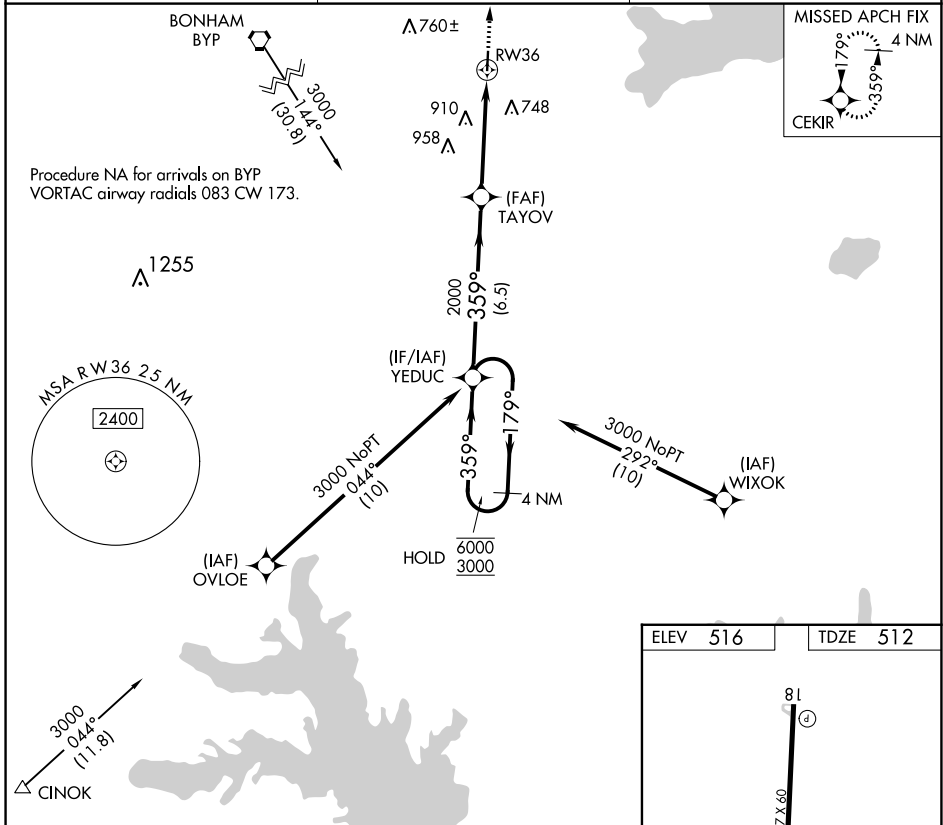
RNP APCH.
 ▼ Use Greenville altimeter setting, when not received, use Sulphur Springs altimeter setting and increase all MDAs 20 feet. Rwy 36 helicopter visibility reduction below 3/4 SM NA.
 ▲ NA

MISSED APPROACH: Climb to 3000 direct CEKIR and hold.

GVT AWOS-3
133.425

FORT WORTH CENTER
127.6 254.3

CTAF
122.9



CATEGORY	A	B	C	D
LNAV MDA	1140-1	628 (700-1)	NA	

SC-2, 26 DEC 2024 to 23 JAN 2025

SC-2, 26 DEC 2024 to 23 JAN 2025