

ATLANTA, GEORGIA

AL-5944 (FAA)

24305

WAAS CH 53743 W10A	APP CRS 100°	Rwy ldg 5800 TDZE 795 Apt Elev 820
--	------------------------	---

RNAV (GPS) RWY 10

COVINGTON MUNI (CVC)

RNP APCH.

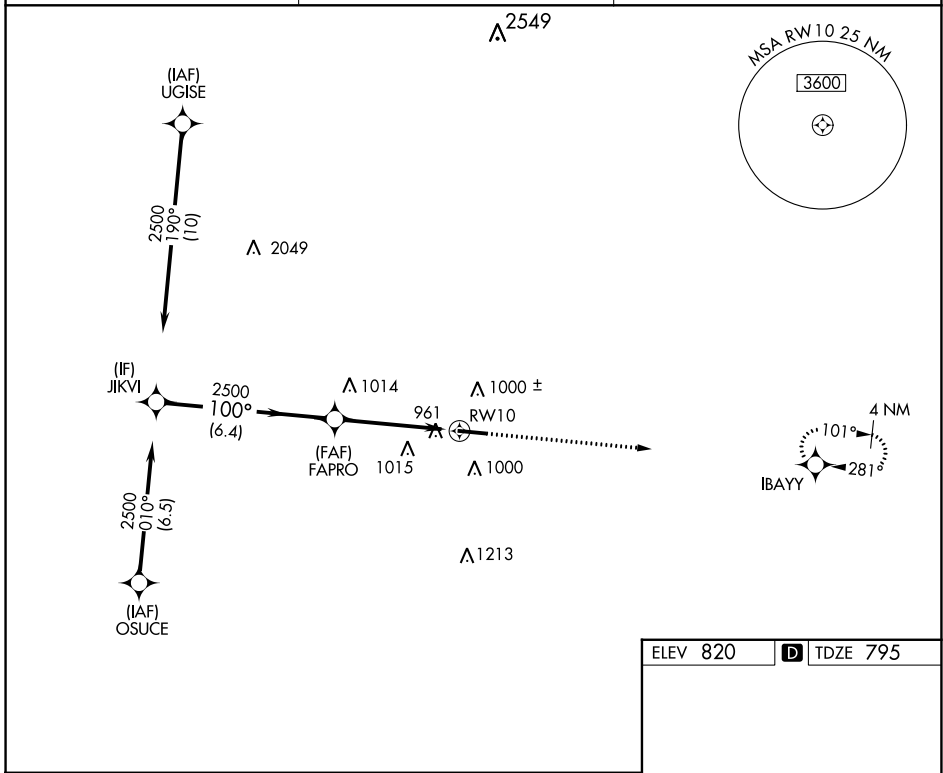
▼ Rwy 10 helicopter visibility reduction below 1 SM NA.
▲ Rwy 10 Straight-in and Circling minimums NA at night.

MISSED APPROACH: Climb to 2600 direct IBAYY and hold.

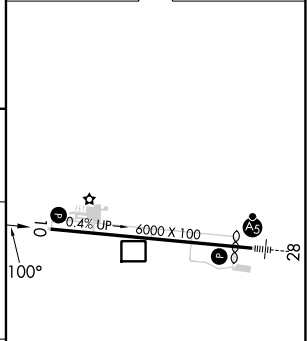
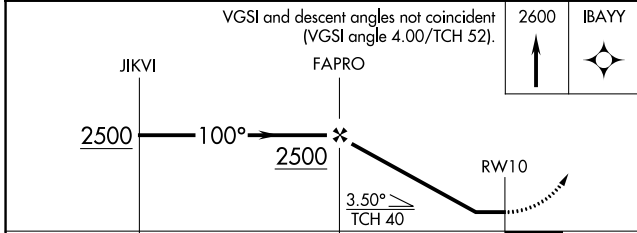
AWOS-3
118.725

ATLANTA APP CON
128.575 343.675

UNICOM
123.0 (CTAF) 0



ELEV 820 **D** TDZE 795



CATEGORY	A	B	C	D
LP MDA	1220-1	425 (400-1)	1220-1¼	425 (400-1¼)
RNAV MDA	1220-1	425 (400-1)	1220-1¼	425 (400-1¼)
C CIRCLING	1320-1	500 (500-1)	1380-1½ 560 (600-1½)	1380-2 560 (600-2)

MIRL Rwy 10-28 **0**

ATLANTA, GEORGIA
Amdt 2 12AUG21

33°38'N-83°51'W

COVINGTON MUNI (CVC) RNAV (GPS) RWY 10

SE-4, 26 DEC 2024 to 23 JAN 2025

SE-4, 26 DEC 2024 to 23 JAN 2025