

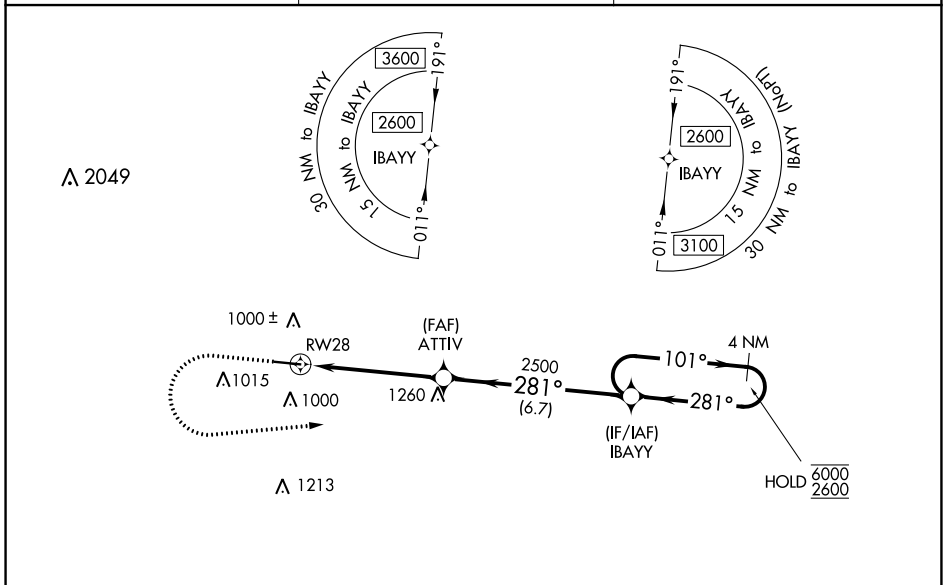
WAAS CH <b>72710</b> <b>W28A</b>	APP CRS <b>281°</b>	Rwy Idg TDZE <b>810</b> Apt Elev <b>820</b>
--	------------------------	---

# RNAV (GPS) RWY 28

COVINGTON MUNI (CVC)

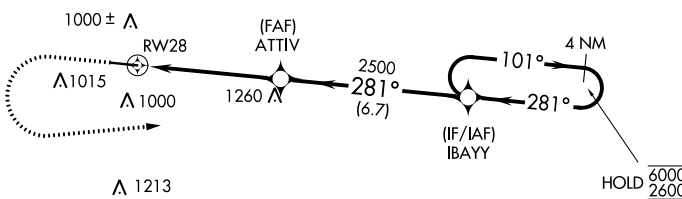
RNP APCH - GPS.	MALSR	MISSED APPROACH: Climb to 1300 then climbing left turn to 2600 direct IBAYY and hold.
<p><b>⚠</b> Circling Rwy 10 NA at night. Rwy 28 helicopter visibility reduction below 3/4 SM NA. For uncompensated Baro-VNAV systems, LNAV/VNAV NA below -16°C or above 54°C. For inop ALS, increase LNAV Cat C/D visibility to 1 1/2 SM.</p>		

AWOS-3 <b>118.725</b>	ATLANTA APP CON <b>128.575 343.675</b>	UNICOM <b>123.0 (CTAF) 0</b>
--------------------------	---	---------------------------------

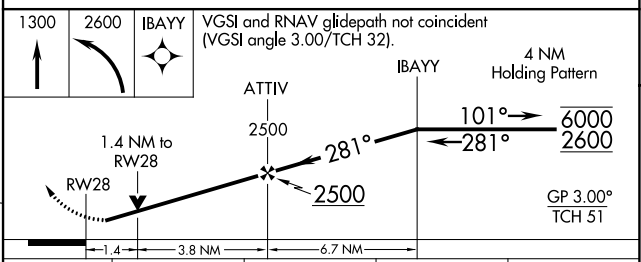
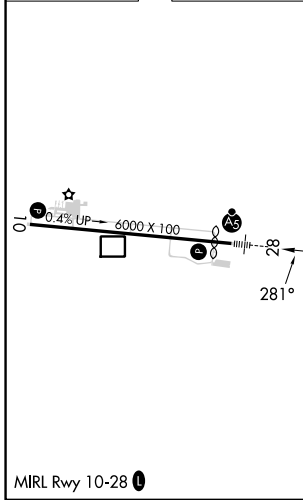


SE-4, 26 DEC 2024 to 23 JAN 2025

SE-4, 26 DEC 2024 to 23 JAN 2025



ELEV 820	<b>D</b>	TDZE 810
----------	----------	----------



CATEGORY	A	B	C	D
LPV DA		1078-7/8	268 (300-7/8)	
LNAV/VNAV DA		1243-7/8	433 (500-7/8)	
LNAV MDA		1280-1	470 (500-1)	
<b>C</b> CIRCLING	1320-1	500 (500-1)	1380-1 1/2 560 (600-1 1/2)	1380-2 560 (600-2)

MIRL Rwy 10-28 **0**