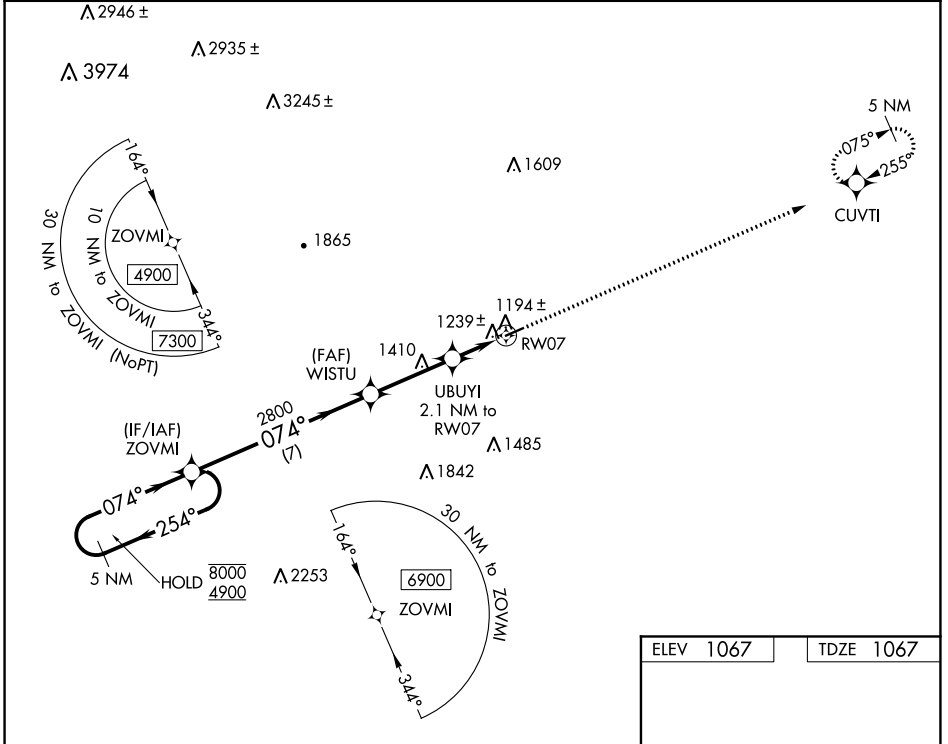


WAAS CH <b>65836</b> W07A	APP CRS <b>074°</b>	Rwy Idg TDZE Apt Elev	<b>4001</b> <b>1067</b> <b>1067</b>
---------------------------------	------------------------	-----------------------------	---

# RNAV (GPS) RWY 7

ELKIN MUNI (ZEF)

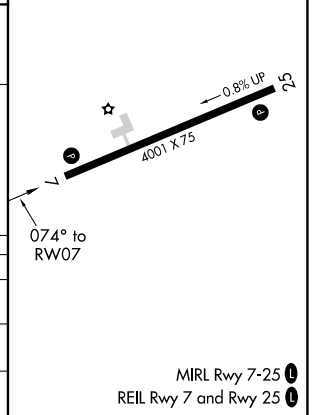
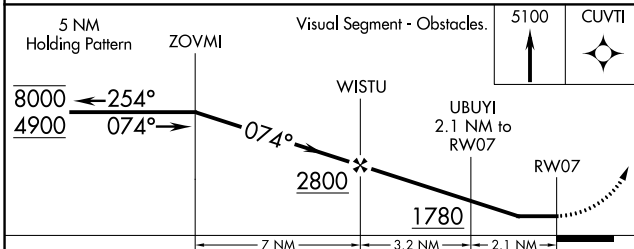
RNP APCH.	<p>Procedure NA at night. Obtain local altimeter setting on CTAF; when not received, use Mount Airy altimeter setting and increase all MDAs 80 feet and all Cats C/D visibilities ¼ SM. Rwy 7 helicopter visibility reduction below 1 SM NA.</p>	<p>MISSED APPROACH: Climb to 5100 direct CUVTI and hold, continue climb-in-hold to 5100.</p>
<p>ATLANTA CENTER <b>125.15 263.0</b></p>		<p>UNICOM <b>123.05 (CTAF)</b></p>



SE-2, 26 DEC 2024 to 23 JAN 2025

SE-2, 26 DEC 2024 to 23 JAN 2025

ELEV 1067	TDZE 1067
-----------	-----------



CATEGORY	A	B	C	D
LP MDA	1460-1	393 (400-1)	1460-1½	393 (400-1½)
LNAV MDA	1500-1	433 (500-1)	1500-1¼	433 (500-1¼)
CIRCLING	1540-1 473 (500-1)	1600-1 533 (600-1)	1680-1¾ 613 (700-1¾)	1840-2½ 773 (800-2½)