

WAAS CH <b>40318</b> <b>W35A</b>	APP CRS <b>354°</b>	Rwy Idg TDZE Apt Elev	<b>5000</b> <b>648</b> <b>657</b>
--	------------------------	-----------------------------	---

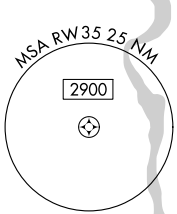
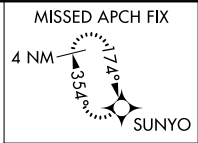
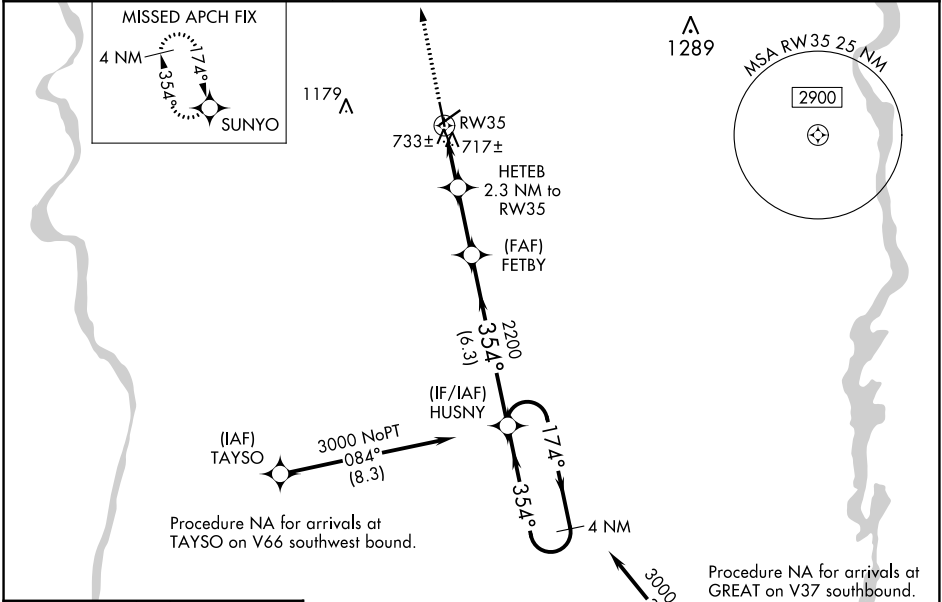
# RNAV (GPS) RWY 35

CHESTER CATAWBA RGNL (DCM)

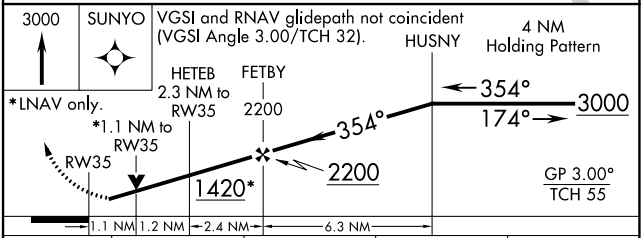
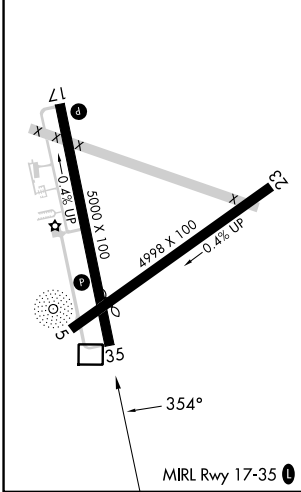
**⚠** Circling to Rwy 5-23 NA at night. For uncompensated Baro-VNAV systems, LNAV/VNAV NA below -16°C (4°F) or above 47°C (116°F). DME/DME RNP-0.3 NA. Visibility reduction by helicopters NA. When local altimeter setting not received, use Rock Hill altimeter setting and increase all DA 33 feet and all MDAs 40 feet; increase LPV, LNAV/VNAV all Cats and LNAV Cat C visibility ¼ mile. Baro-VNAV and VDP NA when using Rock Hill altimeter setting.

**MISSED APPROACH:**  
Climb to 3000 direct SUNYO and hold.

AWOS-3 <b>120.975</b>	CHARLOTTE APP CON <b>120.05 307.8</b>	UNICOM <b>122.7 (CTAF) 0</b>
--------------------------	--	---------------------------------



ELEV 657	TDZE 648
----------	----------



CATEGORY	A	B	C	D
LPV DA	940-1 292 (300-1)			
LNAV/VNAV DA	1010-1¼ 362 (400-1¼)			
LNAV MDA	1020-1 372 (400-1)			1020-1¼ 372 (400-1¼)
CIRCLING	1160-1 503 (600-1)		1280-1¾ 623 (700-1¾)	1480-2¾ 823 (900-2¾)

SE-2, 26 DEC 2024 to 23 JAN 2025

SE-2, 26 DEC 2024 to 23 JAN 2025