

WAAS CH 65828 W17A	APP CRS 173°	Rwy Idg TDZE Apt Elev	5002 1265 1284
--	------------------------	-----------------------------	---

RNAV (GPS) RWY 17

STEPHENS COUNTY (BKD)

RNP APCH.

MISSED APPROACH: Climb to 3600 direct RUCOS and hold.

⚠ Rwy 17 helicopter visibility reduction below 3/4 SM NA.

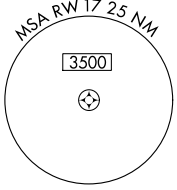
AWOS-3
120.175

FORT WORTH CENTER
127.0 360.6

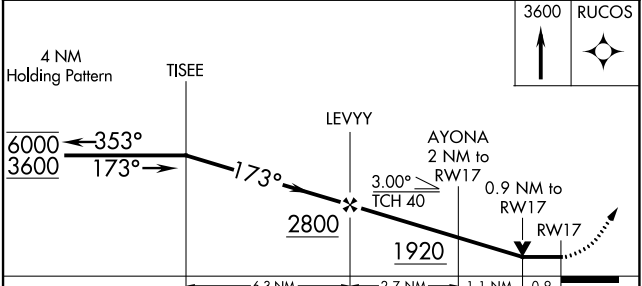
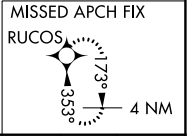
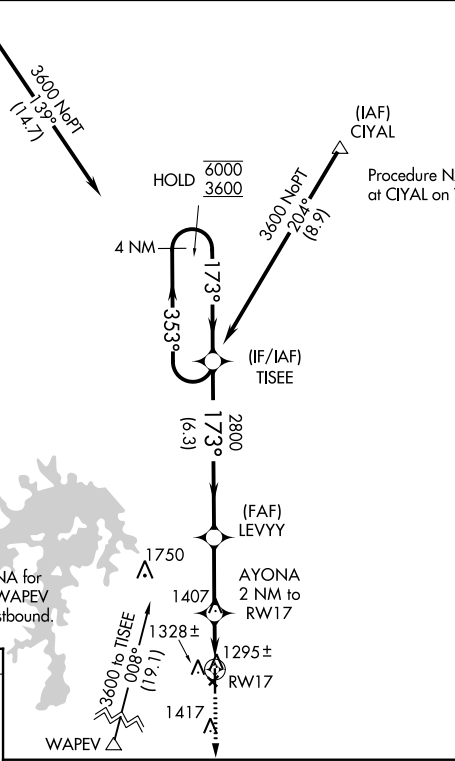
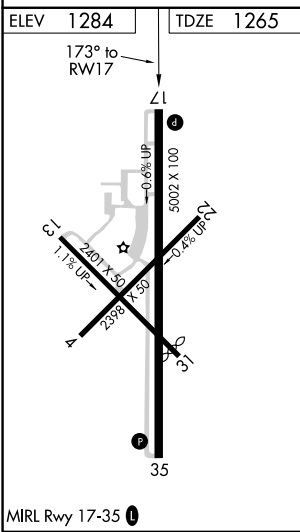
UNICOM
122.8 (CTAF) 0

Procedure NA for arrivals at AJAHO on V77 northeast bound.

Procedure NA for arrivals at CIYAL on V16 northeast bound.



Procedure NA for arrivals at WAPEV on V66 westbound.



CATEGORY	A	B	C	D
LP MDA	1580-1 315 (300-1)			
LNAV MDA	1700-1	435 (500-1)	1700-1¼	435 (500-1¼)

SC-2, 26 DEC 2024 to 23 JAN 2025

SC-2, 26 DEC 2024 to 23 JAN 2025