

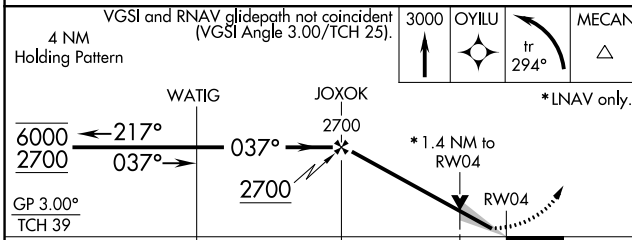
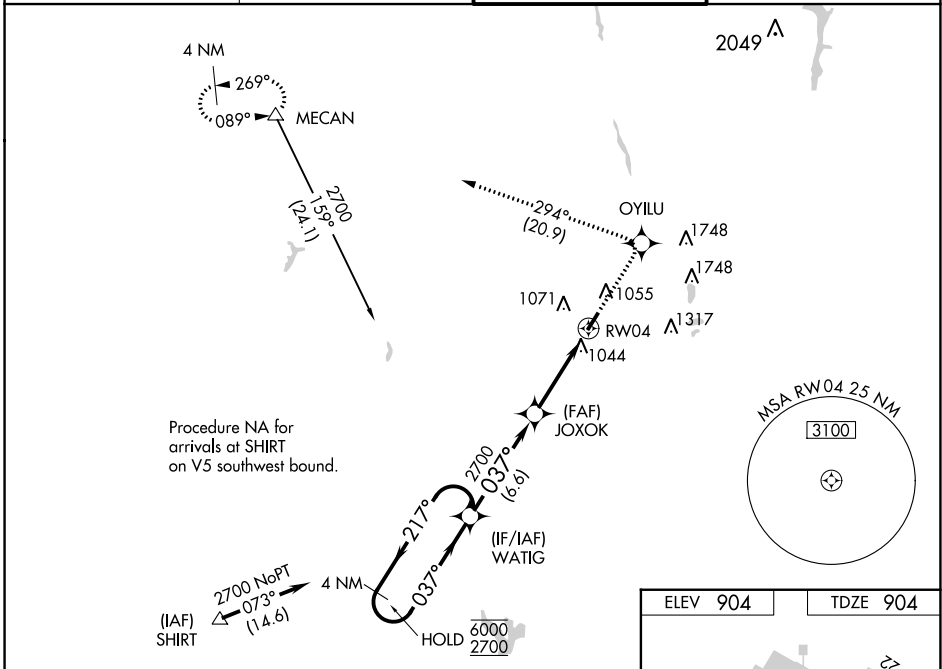
WAAS CH <b>90505</b> <b>W04A</b>	APP CRS <b>037°</b>	Rwy Idg TDZE Apt Elev	<b>5500</b> <b>904</b> <b>904</b>
--	------------------------	-----------------------------	---

# RNAV (GPS) RWY 4

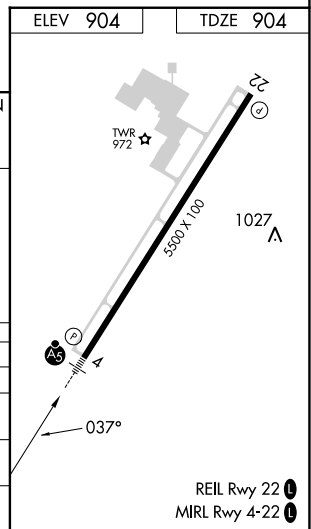
BOLTON FLD (TZR)

RNP APCH. ▼ For uncompensated Baro-VNAV systems, LNAV/VNAV NA below -16°C or above 54°C. For inop ALS, increase LNAV/VNAV all Cats visibility to 1¼ SM and LNAV Cats C/D visibility to 1½ SM.	MALSR AS	MISSED APPROACH: Climb to 3000 direct OYILU and left turn on track 294° to MECAN and hold.
--	-------------	---

AWOS-3PT <b>135.925</b>	COLUMBUS APP CON <b>134.0 279.6</b>	BOLTON TOWER ★ <b>128.1 (CTAF) 0</b>	GND CON <b>121.8</b>
----------------------------	--	---	-------------------------



CATEGORY	A	B	C	D
LPV DA	1163-½ 259 (300-½)			
LNAV/VNAV DA	1325-1 421 (500-1)			
LNAV MDA	1360-½ 456 (500-½)	1360-7/8 456 (500-7/8)	1360-1 456 (500-1)	1360-1 456 (500-1)
CIRCLING	1360-1 456 (500-1)	1380-1 476 (500-1)	1380-1½ 476 (500-1½)	1500-2 596 (600-2)



EC-2, 26 DEC 2024 to 23 JAN 2025

EC-2, 26 DEC 2024 to 23 JAN 2025